



Connells

Pittick Close
Long Hanborough WITNEY

Pittick Close Long Hanborough WITNEY OX29 8FU

for sale
£375,000



Property Description

Built by award winning Pye Homes is this beautifully presented two bedroom semi-detached property that is located in a popular development in Long Hanborough which is located close to a well-regarded school and Long Hanborough train station with plenty of shops including the co-op close by for convenience.

The property is accessed via a porch and then a door that leads straight into a spacious sitting room which features the stairs to the first floor. Leaving the sitting room and walking through you will find a downstairs WC, storage, and access to a nicely fitted kitchen/dining room. The kitchen features plenty of worktop space and storage cupboards and features everything you could possibly need in a kitchen.

As you walk up to the first floor you will find two well-proportioned bedrooms with the master benefitting from having its own en suite. There is an additional three-piece bathroom that services the other bedroom which features double wardrobe space.

Externally to the front the property offers driveway parking for three vehicles. The rear garden has a patio area which is perfect for alfresco dining and BBQs with the rest of the garden being mainly laid to lawn. Additionally, there is a shed which could house garden tools and furniture and offer further storage options.

Hanborough Gate has a priceless combination of connectivity and countryside views. A train from Hanborough Station will have you in the lively city of Oxford in just 10 minutes.



Porch

4' 3" x 4' 3" (1.30m x 1.30m)

Sitting Room

15' 6" x 12' 6" (4.72m x 3.81m)

Made to measure curtains and motorised blind

Kardean flooring

W.C

3' 2" x 5' 11" (0.97m x 1.80m)

Kitchen/Diner

11' x 12' 6" (3.35m x 3.81m)

High quality fitted kitchen/dining room with integrated Neff appliances, washing machine, dishwasher, fridge freezer and hob and oven.

Made to measure motorised blind

Bedroom 1

11' 6" x 12' 6" (3.51m x 3.81m)

Fitted wardrobes

Made to measure curtains and roman blind

Bedroom 2

9' 7" x 10' 6" (2.92m x 3.20m)

Access to part boarded loft with loft ladder and battery-operated lighting
Fitted wardrobes

Made to measure roman blind

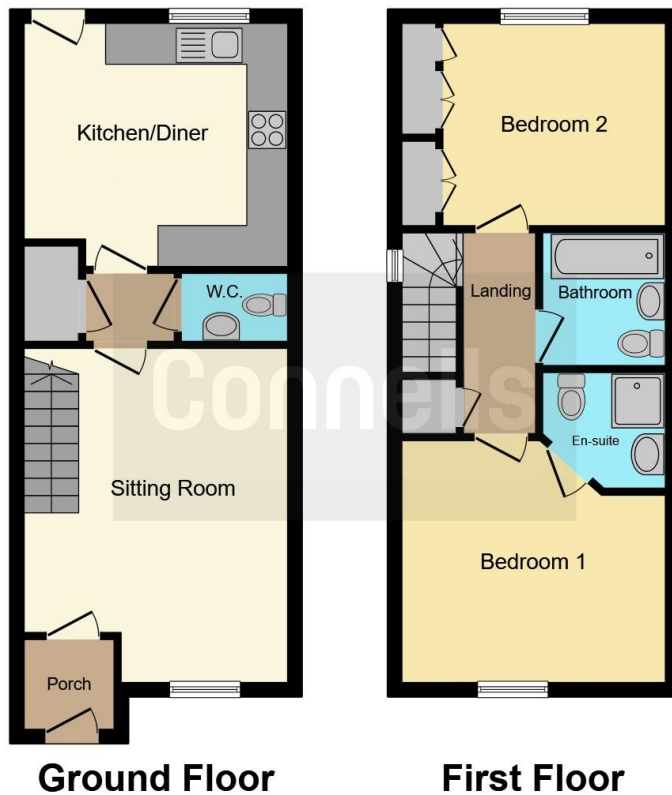
Bathroom

6' 6" x 5' 9" (1.98m x 1.75m)

En Suite

5' 5" x 5' 9" (1.65m x 1.75m)





This floor plan is for illustrative purposes only. It is not drawn to scale. Any measurements, floor areas (including any total floor area), openings and orientation are approximate. No details are guaranteed, they cannot be relied upon for any purpose and they do not form part of any agreement. No liability is taken for any error, omission or misstatement. A party must rely upon its own inspection(s). Powered by www.focalagent.com

To view this property please contact Connells on

T 01993 778 281
E witney@connells.co.uk

13 Corn Street
 WITNEY OX28 6DB

EPC Rating: B Council Tax
 Band: C

view this property online connells.co.uk/Property/WNY305716

Tenure: Freehold



1. MONEY LAUNDERING REGULATIONS Intending purchasers will be asked to produce identification documentation at a later stage and we would ask for your co-operation in order that there will be no delay in agreeing the sale. 2. These particulars do not constitute part or all of an offer or contract. 3. The measurements indicated are supplied for guidance only and as such must be considered incorrect. Potential buyers are advised to recheck measurements before committing to any expense. 4. We have not tested any apparatus, equipment, fixtures, fittings or services and it is in the buyers interest to check the working condition of any appliances.

Connells Residential is registered in England and Wales under company number 1489613, Registered Office is Cumbria House, 16-20 Hockliffe Street, Leighton Buzzard, Bedfordshire, LU7 1GN. VAT Registration Number is 500 2481 05.

See all our properties at www.connells.co.uk | www.rightmove.co.uk | www.zoopla.co.uk

Property Ref: WNY305716 - 0003