





The development enjoys a tranquil charm, complementing the historic and vibrant character of Dorchester-on-Thames. A courtyard garden, thoughtfully landscaped with trees, herbaceous borders, and a traditional brick-built dovecote, forms the heart of the estate. Just a short walk away, the village offers an array of tearooms, shops, and essential amenities, alongside a lively calendar of social and cultural events. The famous Norman abbey and scenic walks along the Thames Path add to the area's timeless appeal.

Cognatum Estates provides comprehensive management services, including building maintenance, window cleaning, refuse collection, and upkeep of the gardens and grounds, personal alarm system is installed in each home & on-site estate managers.



### **Living Room**

11'9 X 16'8

### **W.C**

### **Kitchen**

10'2 X 10'9

### **Dining Room**

8'6 X 10'9

### **Bedroom One**

11'5 X 13'1

### **Bedroom Two**

11'5 X 13'1

### **Bathroom**

6'10 X 9'2

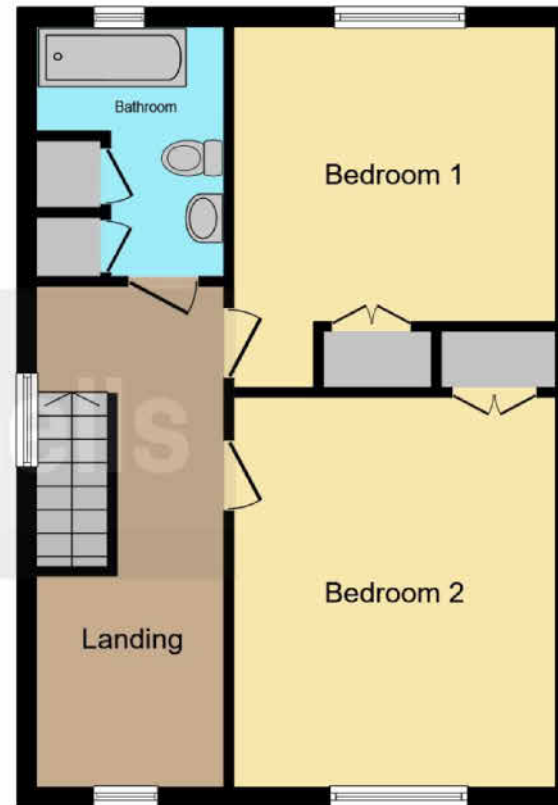








**Ground Floor**



**First Floor**

This floor plan is for illustrative purposes only. It is not drawn to scale. Any measurements, floor areas (including any total floor area), openings and orientation are approximate. No details are guaranteed, they cannot be relied upon for any purpose and they do not form part of any agreement. No liability is taken for any error, omission or misstatement. A party must rely upon its own inspection(s). Powered by [www.focalagent.com](http://www.focalagent.com)



Connells SIGNATURE

