



Connells

West Croft
Berinsfield Wallingford

West Croft Berinsfield Wallingford OX10 7NL

for sale offers in excess of
£300,000



Property Description

This exceptional three-bedroom semi-detached home offers a rare opportunity to own a property with truly sensational views across open fields-where, if you're lucky, you might even spot deer roaming freely. Backing directly onto this picturesque landscape, the garden provides a peaceful, natural backdrop, making this home a true hidden gem.

Ready to move into, yet offering endless potential for full renovation, this property invites you to create a space that's uniquely your own. The front of the home features driveway parking for two cars, along with the added bonus of a garage/workshop, perfect for storage, hobbies, or additional workspace.

Inside, the ground floor boasts a convenient W/C, a spacious living room where sliding glass doors perfectly frame the stunning views, flooding the space with natural light and providing direct access to the garden. The open-plan kitchen and dining area create a sociable space, ideal for family gatherings and entertaining.

Upstairs, you'll find two generously sized double bedrooms, a comfortable single bedroom, and a family bathroom. Just like the living room, the upstairs rooms make the most of the spectacular views, offering an ever-changing, serene outlook to wake up to each day.

Ideal for first-time buyers or families looking to create their forever home, this property is ready to welcome the next generation of memories. A true one-of-a-kind-don't miss your chance to view this incredible home.

Ground Floor

Porch

2' 11" x 6' 2" (0.89m x 1.88m)

Living Room

11' 1" x 11' 5" (3.38m x 3.48m)

Kitchen

17' 4" x 12' 5" (5.28m x 3.78m)

First Floor

Bedroom One

10' 5" x 14' 1" (3.17m x 4.29m)

Bedroom Two

9' 6" x 11' 9" (2.90m x 3.58m)

Bedroom Three

7' 6" x 8' 10" (2.29m x 2.69m)

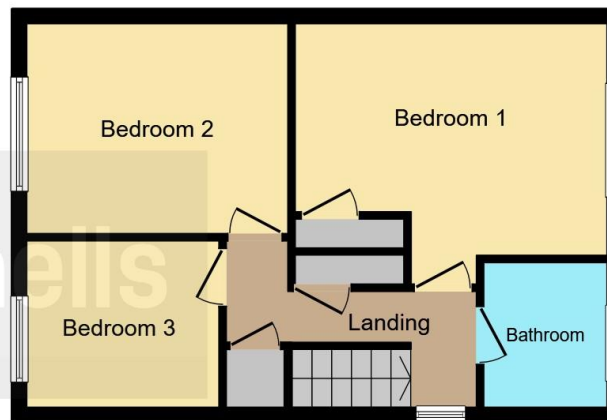
Bathroom

6' 6" x 5' 2" (1.98m x 1.57m)





Ground Floor



First Floor

This floor plan is for illustrative purposes only. It is not drawn to scale. Any measurements, floor areas (including any total floor area), openings and orientation are approximate. No details are guaranteed, they cannot be relied upon for any purpose and they do not form part of any agreement. No liability is taken for any error, omission or misstatement. A party must rely upon its own inspection(s). Powered by www.focalagent.com

To view this property please contact Connells on

T 01235 555611
E abingdon@connells.co.uk

11 High Street
 ABINGDON OX14 5BB

EPC Rating: Awaited

view this property online connells.co.uk/Property/ABG305265



Tenure: Freehold



1. MONEY LAUNDERING REGULATIONS Intending purchasers will be asked to produce identification documentation at a later stage and we would ask for your co-operation in order that there will be no delay in agreeing the sale. 2. These particulars do not constitute part or all of an offer or contract. 3. The measurements indicated are supplied for guidance only and as such must be considered incorrect. Potential buyers are advised to recheck measurements before committing to any expense. 4. We have not tested any apparatus, equipment, fixtures, fittings or services and it is in the buyers interest to check the working condition of any appliances.

Connells Residential is registered in England and Wales under company number 1489613, Registered Office is Cumbria House, 16-20 Hockliffe Street, Leighton Buzzard, Bedfordshire, LU7 1GN. VAT Registration Number is 500 2481 05.

See all our properties at www.connells.co.uk | www.rightmove.co.uk | www.zoopla.co.uk

Property Ref: ABG305265 - 0003