



Goodenough Drive, Abingdon

Connells SIGNATURE



Goodenough Drive, Abingdon

Welcome to this exceptional property, accessed via a welcoming entrance hall that sets the tone for the rest of the home.

The ground floor features a convenient downstairs cloakroom and provides access to the spacious dual aspect living room, which spans the full width of one side of the property.

On the other side, you'll find the open plan kitchen/dining room, perfect for modern living.

The contemporary kitchen is equipped with a range of wall and base units, rolled edged worktops, a 1.5 sink with drainer, a multi-ring gas hob, electric extractor hood, and a suite of integrated appliances including a

fridge/freezer and dishwasher.

There's also a utility cupboard/pantry with space and plumbing for a washer/dryer, and patio doors that open into the garden.

The first floor accommodates the main bedroom, complete with built-in wardrobes and an en-suite shower room. A second generously sized bedroom with built-in wardrobes, a dual aspect study, a family bathroom with a modern white suite and a further single bedroom ideal for an office/child's rooms which complete this level. The second floor offers two identically sized double bedrooms, both featuring vaulted ceilings and Velux windows, serviced by another family bathroom with a modern white suite.

Outside, the enclosed south-westerly facing rear garden includes a raised decked seating area ideal for entertaining, a lawn, and side access.

Ample off-street parking is available to the side of the property.

Sitting Room

11'2 X 17'1

Kitchen/Dining Room

9'1 X 27'1

Bedroom One

9'3 X 12'3

Located on First Floor

En Suite to Bedroom One

9'1 X 4'7

Shower Room





Bedroom Four

9'10 X 8'0

Located on First Floor

Bathroom

7'1 X 5'11

Study/Home Office

6'11 X 6'9

Bedroom Two

10 X 16'6

Located on Second Floor



Bathroom

6'6 X 5'10

On Second Floor

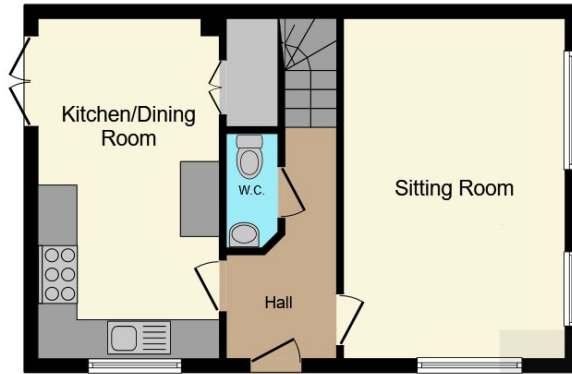
Skylight

Bedroom Three

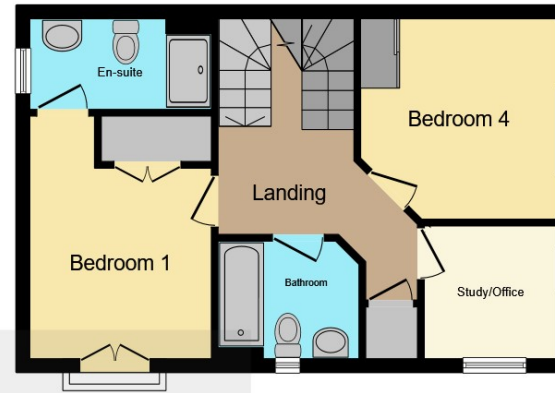
9'2 X 16'6

One Second Floor

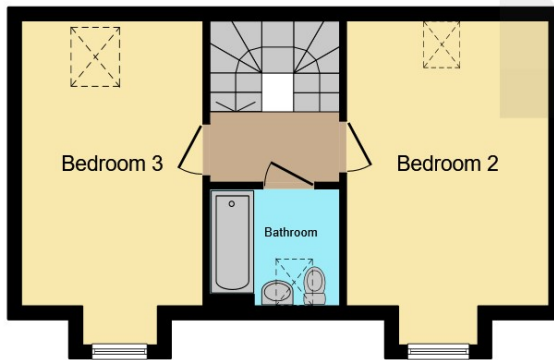
Skylight



Ground Floor



First Floor



Second Floor

Connells

This floor plan is for illustrative purposes only. It is not drawn to scale. Any measurements, floor areas (including any total floor area), openings and orientation are approximate. No details are guaranteed, they cannot be relied upon for any purpose and they do not form part of any agreement. No liability is taken for any error, omission or misstatement. A party must rely upon its own inspection(s). Powered by www.focalagent.com

Goodenough Drive, Abingdon

This wonderful home combines spacious living areas with modern conveniences, making it perfect for a growing family. Don't miss the opportunity to make it your own!

Price

POA

Tenure: Freehold

EPC Rating: B

Connells SIGNATURE

To view this property please contact us on

01235 555611

or email abingdon@connells.co.uk

11 High Street, Abingdon, Oxfordshire OX14 5BB

CONNELLS.CO.UK



1. MONEY LAUNDERING REGULATIONS Intending purchasers will be asked to produce identification documentation at a later stage and we would ask for your co-operation in order that there is no delay in agreeing the sale. 2. These particulars do not constitute part or all of an offer or contract. 3. The measurements indicated are supplied for guidance only and as such must be considered incorrect. Potential buyers are advised to recheck measurements before committing to any expense. 4. We have not tested any apparatus, equipment, fixtures or services and it is in the buyers interest to check the working condition of any appliances. 5. Where an EPC, or a Home Report (Scotland only) is held for this property, it is available for inspection at the branch by appointment. If you require a printed version of a Home Report, you will need to pay a reasonable production charge reflecting printing and other costs. 6. We are not able to offer an opinion either written or verbal on the content of these reports and this must be obtained from your legal representative. 7. Whilst we take care in preparing these reports, a buyer should ensure that his/her legal representative confirms as soon as possible all matters relating to title including the extent and boundaries of the property and other important matters before exchange of contracts.

