



Connells

Phipps Road
Oxford



Property Description

Upon entering the property, the hallway leads to a sitting room, a ground-floor shower room and the kitchen. The sitting room provides access to the dining room at the rear, which can also serve as a third bedroom, and features direct access to the rear garden. The kitchen also opens onto the rear garden.

Stairs from the hallway lead to the first floor, where there are two bedrooms and a family bathroom.

Externally, the property includes driveway parking, a rear garden with a decking area, lawn and an outbuilding.

Sitting Room

16' max x 10' 4" max (4.88m max x 3.15m max)

Dining Room

11' 8" max x 10' 7" max (3.56m max x 3.23m max)

Kitchen

15' 10" max x 8' 10" max (4.83m max x 2.69m max)

Bathroom

11' 8" max x 7' 1" max (3.56m max x 2.16m max)

Bedroom One

16' 2" max x 9' 6" max (4.93m max x 2.90m max)

Bedroom Two

7' 2" max x 9' 11" max (2.18m max x 3.02m max)

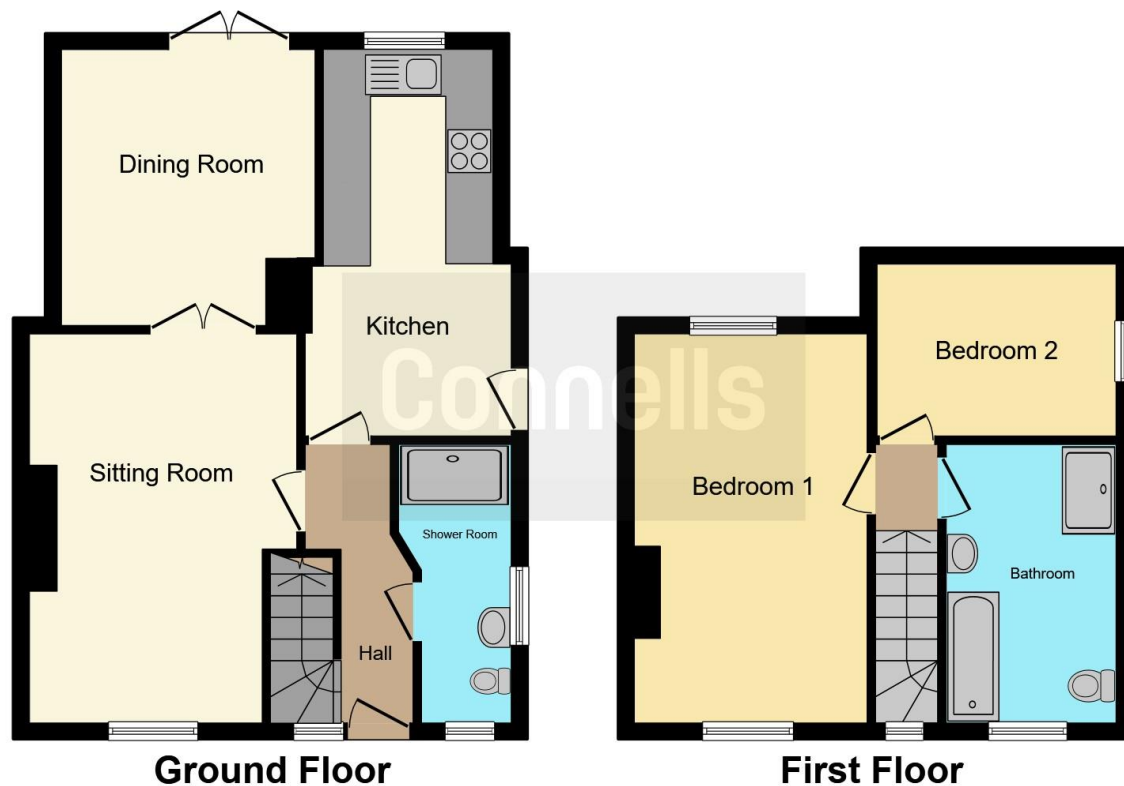
Wet Room

11' 11" max x 4' 9" max (3.63m max x 1.45m max)

Garage/Shed

29' 5" max x 9' 10" max (8.97m max x 3.00m max)





This floor plan is for illustrative purposes only. It is not drawn to scale. Any measurements, floor areas (including any total floor area), openings and orientation are approximate. No details are guaranteed, they cannot be relied upon for any purpose and they do not form part of any agreement. No liability is taken for any error, omission or misstatement. A party must rely upon its own inspection(s). Powered by www.focalagent.com

To view this property please contact Connells on

T 01865 748 448
E cowley@connells.co.uk

60 Between Towns Road
 OXFORD OX4 3LR

EPC Rating: D

view this property online connells.co.uk/Property/COW305841



Tenure: Freehold



1. MONEY LAUNDERING REGULATIONS Intending purchasers will be asked to produce identification documentation at a later stage and we would ask for your co-operation in order that there will be no delay in agreeing the sale. 2. These particulars do not constitute part or all of an offer or contract. 3. The measurements indicated are supplied for guidance only and as such must be considered incorrect. Potential buyers are advised to recheck measurements before committing to any expense. 4. We have not tested any apparatus, equipment, fixtures, fittings or services and it is in the buyers interest to check the working condition of any appliances.

Connells Residential is registered in England and Wales under company number 1489613, Registered Office is Cumbria House, 16-20 Hockliffe Street, Leighton Buzzard, Bedfordshire, LU7 1GN. VAT Registration Number is 500 2481 05.

See all our properties at www.connells.co.uk | www.rightmove.co.uk | www.zoopla.co.uk

Property Ref: COW305841 - 0002