



Connells
FOR SALE

Connells

Pegasus Road
Oxford



Property Description

The entrance hall leads to a kitchen/dining room, with a utility room adjoining the kitchen. The lounge, also accessed from the hallway, connects to an extended reception room and a store, with access to the rear garden.

On the first floor, there are three bedrooms, two of which feature built-in cupboards. There is a separate WC, a bathroom and additional built-in storage in the hallway.

Outside, the property includes a front garden and a south-east facing rear garden with gated access.

Lounge

12' 4" max x 17' max (3.76m max x 5.18m max)

Kitchen/Diner

13' 9" max x 13' 1" max (4.19m max x 3.99m max)

Reception

2/Conservatory

12' 3" max x 9' 5" max (3.73m max x 2.87m max)

Bedroom 1

12' 11" max x 10' max (3.94m max x 3.05m max)

Bedroom 2

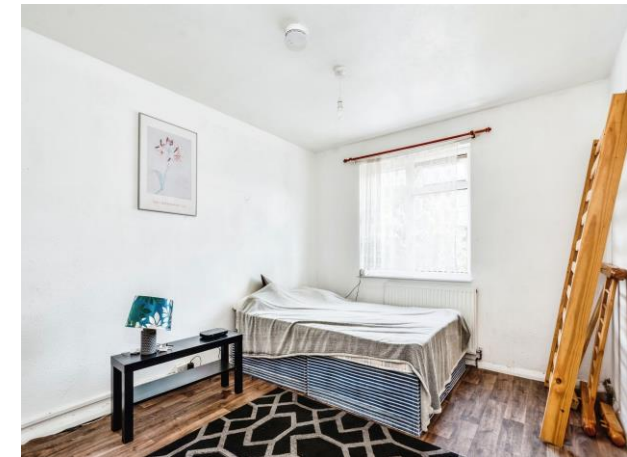
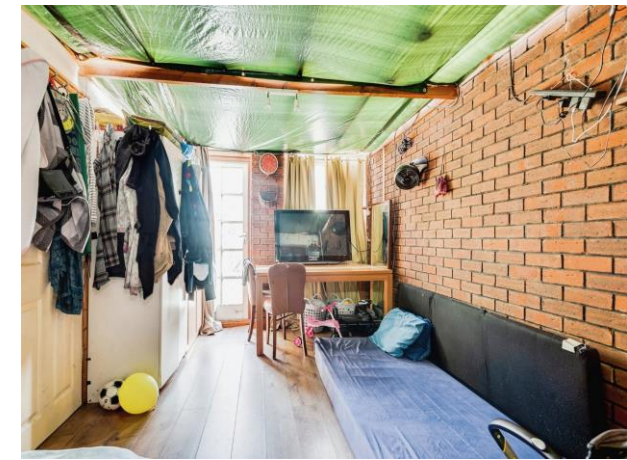
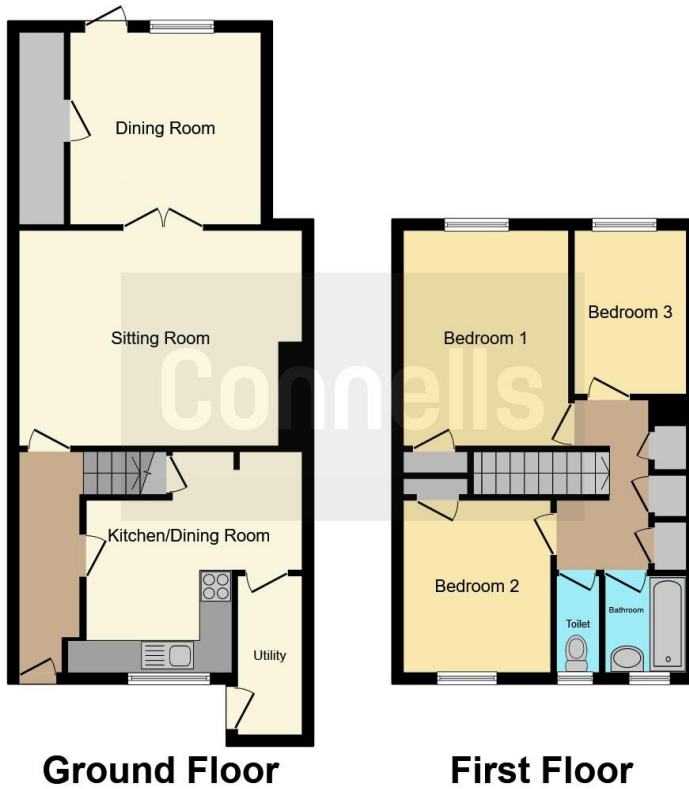
10' 5" max x 8' 11" max (3.17m max x 2.72m max)

Bedroom 3

9' 9" max x 6' 9" max (2.97m max x 2.06m max)







This floor plan is for illustrative purposes only. It is not drawn to scale. Any measurements, floor areas (including any total floor area), openings and orientation are approximate. No details are guaranteed, they cannot be relied upon for any purpose and they do not form part of any agreement. No liability is taken for any error, omission or misstatement. A party must rely upon its own inspection(s). Powered by www.focalagent.com

To view this property please contact Connells on

T 01235 555611
E abingdon@connells.co.uk

11 High Street
 ABINGDON OX14 5BB

EPC Rating: D

view this property online connells.co.uk/Property/COW310031

Tenure: Freehold



1. MONEY LAUNDERING REGULATIONS Intending purchasers will be asked to produce identification documentation at a later stage and we would ask for your co-operation in order that there will be no delay in agreeing the sale. 2. These particulars do not constitute part or all of an offer or contract. 3. The measurements indicated are supplied for guidance only and as such must be considered incorrect. Potential buyers are advised to recheck measurements before committing to any expense. 4. We have not tested any apparatus, equipment, fixtures, fittings or services and it is in the buyers interest to check the working condition of any appliances.

Connells Residential is registered in England and Wales under company number 1489613, Registered Office is Cumbria House, 16-20 Hockliffe Street, Leighton Buzzard, Bedfordshire, LU7 1GN. VAT Registration Number is 500 2481 05.

See all our properties at www.connells.co.uk | www.rightmove.co.uk | www.zoopla.co.uk

Property Ref: COW310031 - 0002