



Sherwood place, Headington

Connells SIGNATURE



Sherwood place, Headington

An ideal first time or investment purchase located on the very edge of the established Barton area of Headington. The property comes with the benefit of a lease in excess of 130 years and no onward chain.

In brief the property comprises entrance hall with security intercom, sitting room with a feature fireplace, the kitchen offers ample floor and wall units with a built-in oven, hob and extractor over.

Bedroom one has a dual aspect with bedroom two directly adjacent, both being served by the family bathroom with a white suite.

Externally communal grounds and allocated parking.

Entrance Hall

Security intercom, wood laminate flooring, coved ceiling, cupboard housing wall mounted gas boiler (replaced in January 2024) radiator.

Sitting Room

11' 10" x 14' 3"

Double glazed window to front aspect, wood laminate flooring, coved ceiling, TV point, feature fireplace, radiator.

Kitchen

6' 4" x 10'

A modern fitted kitchen comprising a selection of floor and wall units, built in oven, hob and extractor over. Inset sink unit, space and plumbing for a washing machine.

Bedroom 1

10' 5" x 10' 3"

Double glazed windows to side and rear, wood laminate flooring, built in wardrobes, radiator.

Bedroom 2

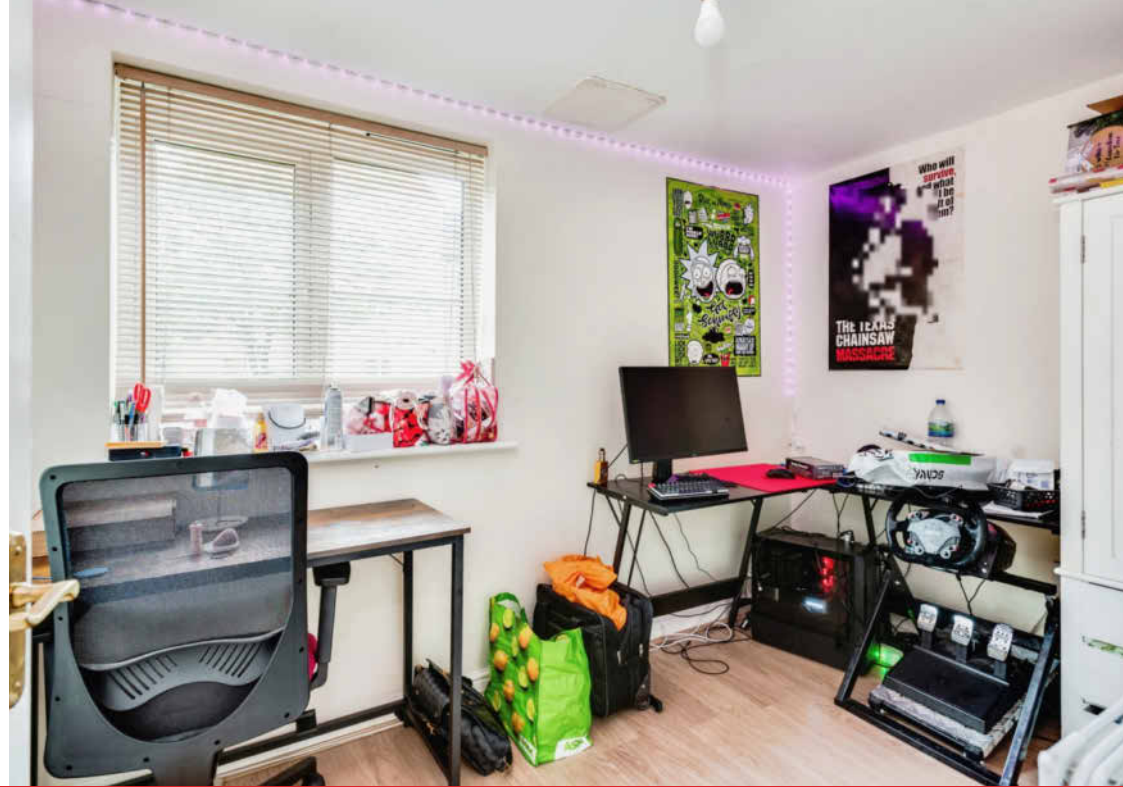
6' 9" x 10' 4"

Double glazed window to side, radiator, wood laminate flooring, built in cupboard, radiator.

Bathroom

Suite comprising a low level WC, wash hand basin and bath with shower over.







This floor plan is for illustrative purposes only. It is not drawn to scale. Any measurements, floor areas (including any total floor area), openings and orientation are approximate. No details are guaranteed, they cannot be relied upon for any purpose and they do not form part of any agreement. No liability is taken for any error, omission or misstatement. A party must rely upon its own inspection(s). Powered by www.focalagent.com

Sherwood place, Headington

A modern two-bedroom ground floor apartment located in the established Barton area of Headington, an ideal first time/investment purchase benefiting from no onward chain. Ground rent £200pa. service charges £1800pa, lease length in excess of 130 years remaining.

Price

£250,000

Tenure: Leasehold

EPC Rating: C

Connells SIGNATURE

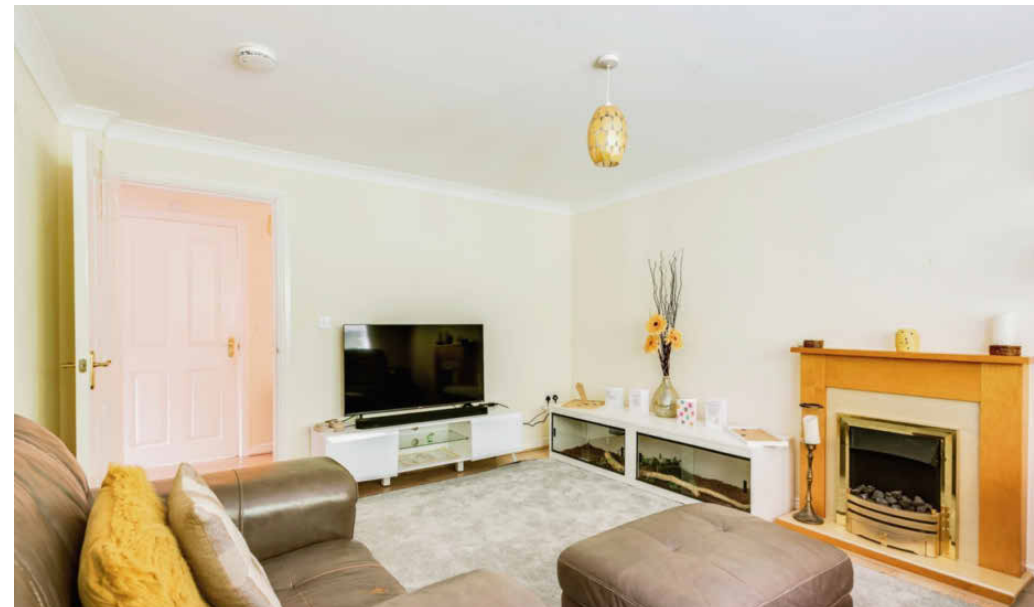
To view this property please contact us on

01865 763 501

or email headington@connells.co.uk

129-131 London Road, Oxford, Oxfordshire OX3 9HZ

CONNELLS.CO.UK



1. MONEY LAUNDERING REGULATIONS Intending purchasers will be asked to produce identification documentation at a later stage and we would ask for your co-operation in order that there is no delay in agreeing the sale. 2. These particulars do not constitute part or all of an offer or contract. 3. The measurements indicated are supplied for guidance only and as such must be considered incorrect. Potential buyers are advised to recheck measurements before committing to any expense. 4. We have not tested any apparatus, equipment, fixtures or services and it is in the buyers interest to check the working condition of any appliances. 5. Where an EPC, or a Home Report (Scotland only) is held for this property, it is available for inspection at the branch by appointment. If you require a printed version of a Home Report, you will need to pay a reasonable production charge reflecting printing and other costs. 6. We are not able to offer an opinion either written or verbal on the content of these reports and this must be obtained from your legal representative. 7. Whilst we take care in preparing these reports, a buyer should ensure that his/her legal representative confirms as soon as possible all matters relating to title including the extent and boundaries of the property and other important matters before exchange of contracts.

