



**Connells**

Middle Village  
Haywards Heath



### Property Description

A well presented two bedroom first floor apartment with two bathrooms (one en suite) and a garage located in the highly sought after Bolnore Village, Haywards Heath.

This lovely apartment is located on the first floor with entrance hallway, living/dining room, kitchen, main bedroom with en suite shower room, second double bedroom and a bathroom.

The property is conveniently situated close to the sought after Bolnore Village Primary School and local village shops whilst being approximately a 1 mile walk from Haywards Heath town centre and approximately 1.3 miles from Haywards Heath train station (14 minutes to Brighton and 45 minutes to London Victoria). The apartment also comes with a garage and allocated parking space.



## Living/Dining Room

12' 10" x 15' 6" ( 3.91m x 4.72m )

## Kitchen

5' 10" x 9' 10" ( 1.78m x 3.00m )

## Main Bedroom

8' 10" x 12' 2" ( 2.69m x 3.71m )

## En Suite Shower Room

## Bedroom 2

7' 4" x 12' 2" ( 2.24m x 3.71m )

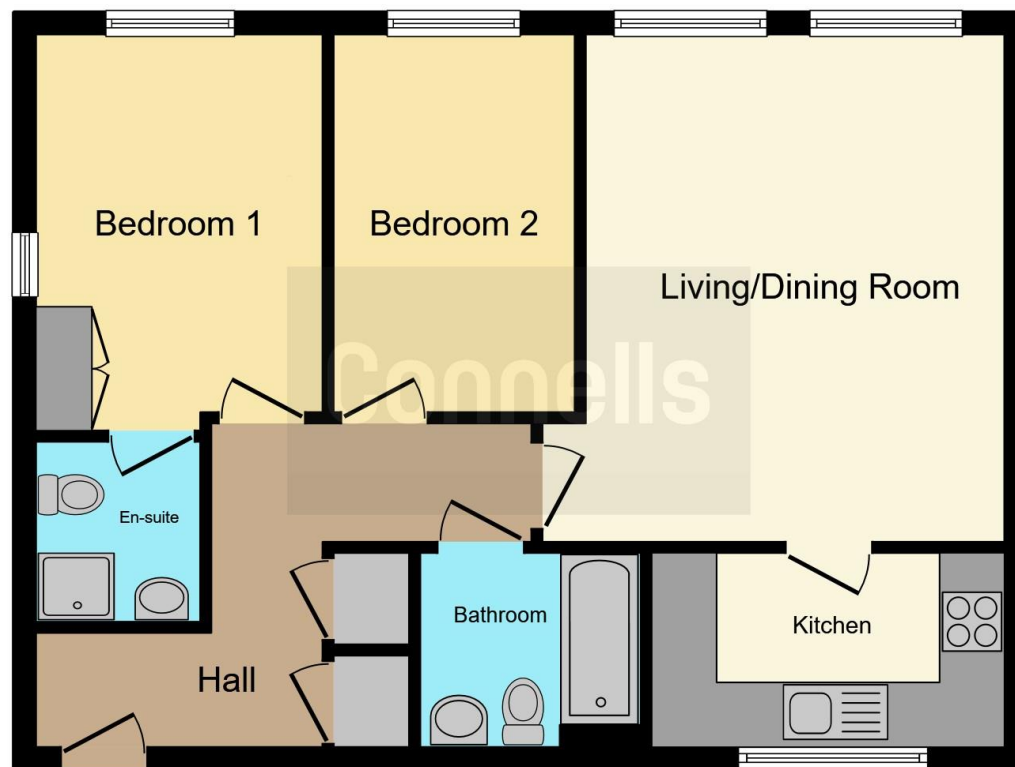
## Bathroom

## Garage









This floor plan is for illustrative purposes only. It is not drawn to scale. Any measurements, floor areas (including any total floor area), openings and orientation are approximate. No details are guaranteed, they cannot be relied upon for any purpose and they do not form part of any agreement. No liability is taken for any error, omission or misstatement. A party must rely upon its own inspection(s). Powered by [www.focalagent.com](http://www.focalagent.com)

To view this property please contact Connells on

**T 01444 441 441**  
**E [haywardsheath@connells.co.uk](mailto:haywardsheath@connells.co.uk)**

135 South Road  
 HAYWARDS HEATH RH16 4LY

**EPC Rating: C**

Tenure: Leasehold

**view this property online [connells.co.uk/Property/HAY405175](http://connells.co.uk/Property/HAY405175)**

This is a Leasehold property with details as follows; Term of Lease 999 years from 01 Jan 2003. Should you require further information please contact the branch. Please Note additional fees could be incurred for items such as

1. MONEY LAUNDERING REGULATIONS Intending purchasers will be asked to produce identification documentation at a later stage and we would ask for your co-operation in order that there will be no delay in agreeing the sale. 2. These particulars do not constitute part or all of an offer or contract. 3. The measurements indicated are supplied for guidance only and as such must be considered incorrect. Potential buyers are advised to recheck measurements before committing to any expense. 4. We have not tested any apparatus, equipment, fixtures, fittings or services and it is in the buyers interest to check the working condition of any appliances.

Connells Residential is registered in England and Wales under company number 1489613, Registered Office is Cumbria House, 16-20 Hockliffe Street, Leighton Buzzard, Bedfordshire, LU7 1GN. VAT Registration Number is 500 2481 05.



**See all our properties at [www.connells.co.uk](http://www.connells.co.uk) | [www.rightmove.co.uk](http://www.rightmove.co.uk) | [www.zoopla.co.uk](http://www.zoopla.co.uk)**

Property Ref: HAY405175 - 0011