



Connells

Renfields  
Haywards Heath

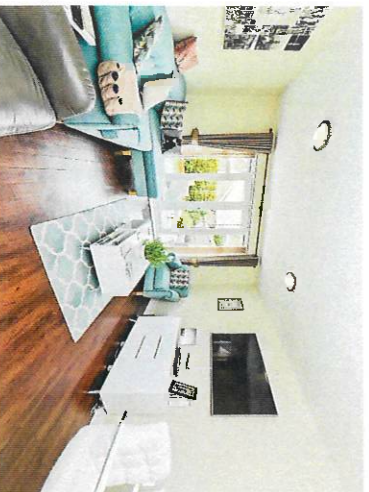


### Property Description

A fabulous 3 Bedroom house with a driveway and garage located in Bolnore Village. This well kept property has a large open planned kitchen/Lounge on the ground floor with a guest toilet and doors leading straight to the garden.

The 3 bedrooms are located on the first floor one having an en suite, along with a modern family bathroom.

This property is perfect for a family who is looking to move straight in without doing much work towards the property.



#### Entrance Hall

6' 8" x 6' 8" ( 2.03m x 2.03m )

#### Lounge/Kitchen

13' 1" x 27' 7" ( 3.99m x 8.41m )

#### Bedroom 1

13' 3" x 8' 9" ( 4.04m x 2.67m )

#### En Suite

6' 5" x 8' 2" ( 1.96m x 2.49m )

#### Bedroom 2

11' 4" x 9' 8" ( 3.45m x 2.95m )

#### Bedroom 3

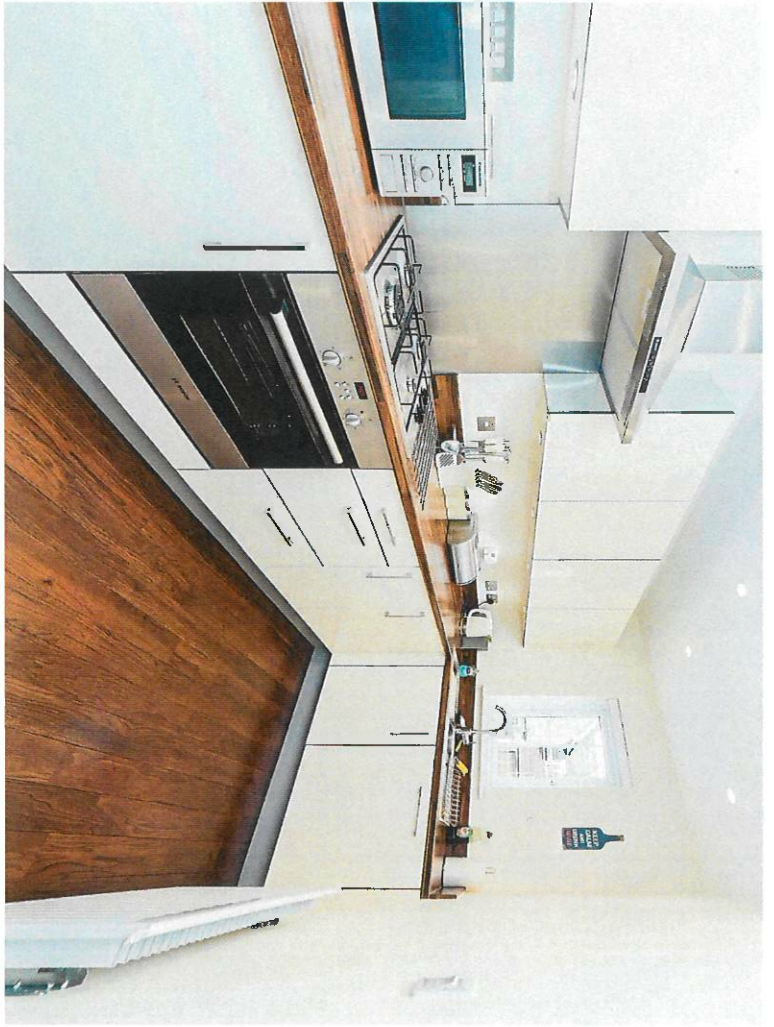
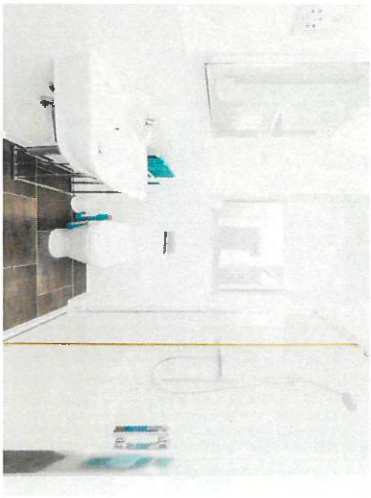
8' 7" x 9' 8" ( 2.62m x 2.95m )

#### Bathroom

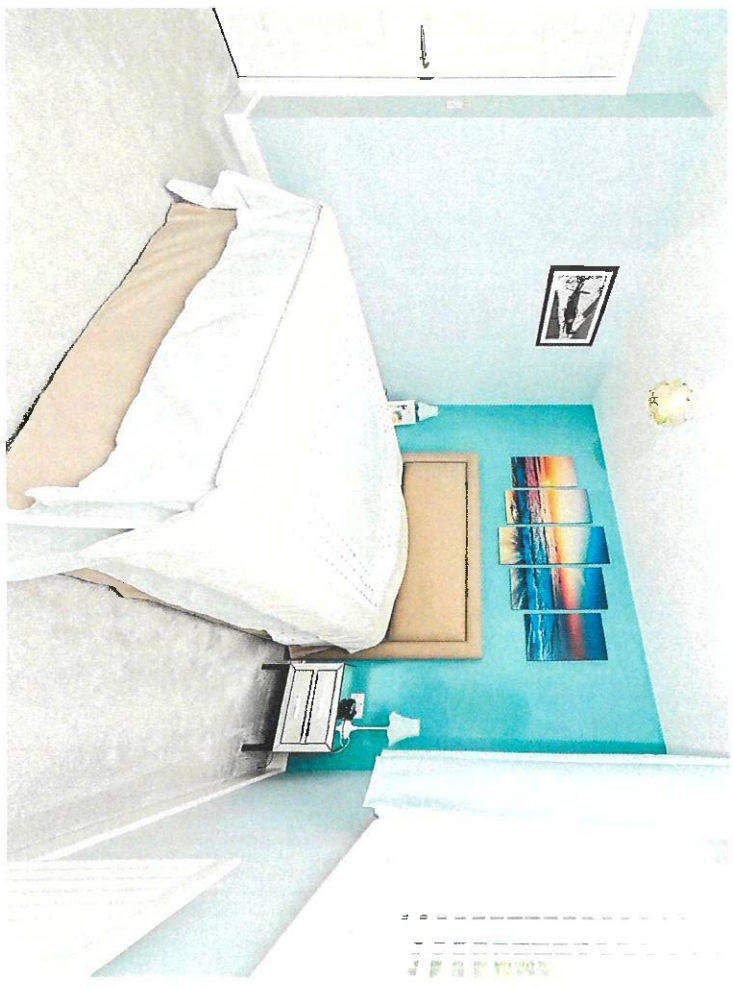
8' 7" x 7' 4" ( 2.62m x 2.24m )

#### Garage

8' 8" x 19' 3" ( 2.64m x 5.87m )



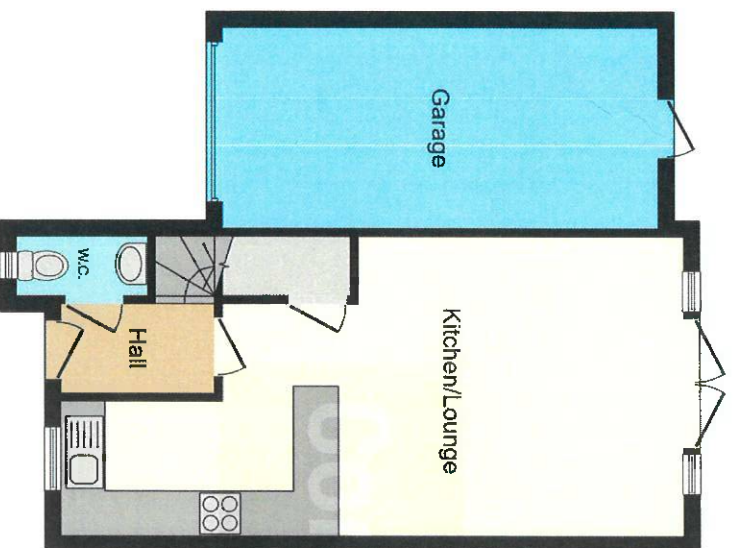




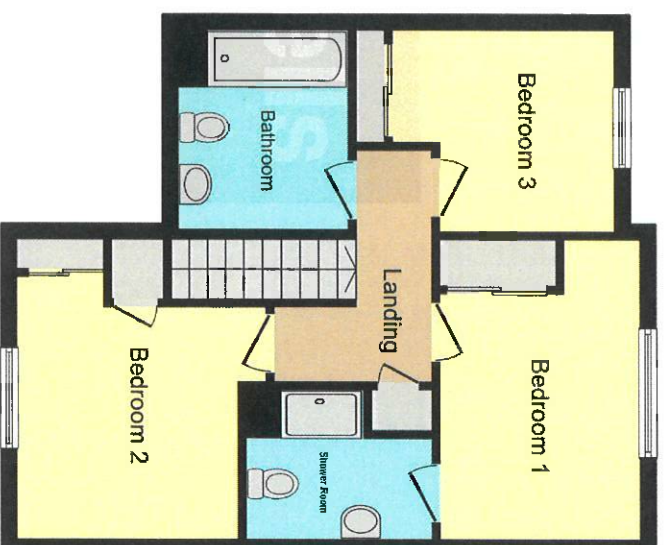








**Ground Floor**



**First Floor**

This floor plan is for illustrative purposes only. It is not drawn to scale. Any measurements, floor areas (including any total floor area), openings and orientation are approximate. No details are guaranteed, they cannot be relied upon for any purpose and they do not form part of any agreement. No liability is taken for any error, omission or misstatement. A party must rely upon its own inspection(s). Powered by [www.focalagent.com](http://www.focalagent.com)

To view this property please contact Connells on

**T 01444 441 441**  
**E [haywardsheath@connells.co.uk](mailto:haywardsheath@connells.co.uk)**

135 South Road  
 HAYWARDS HEATH RH16 4LY

EPC Rating: C

view this property online [connells.co.uk/Property/HAY405144](http://connells.co.uk/Property/HAY405144)

Tenure: Freehold



1. MONEY LAUNDERING REGULATIONS: Intending purchasers will be asked to produce identification documentation at a later stage and we would ask for your co-operation in order that there will be no delay in agreeing the sale. 2. These particulars do not constitute part or all of an offer or contract. 3. The measurements indicated are supplied for guidance only and as such must be considered incorrect. Potential buyers are advised to recheck measurements before committing to any expense. 4. We have not tested any apparatus, equipment, fixtures, fittings or services and it is in the buyers interest to check the working condition of any appliances.

Connells Residential is registered in England and Wales under company number 1489613. Registered Office is Cumbria House, 16-20 Hockliffe Street, Leighton Buzzard, Bedfordshire, LU7 1GN. VAT Registration Number is 500 2481 05.

See all our properties at [www.connells.co.uk](http://www.connells.co.uk) | [www.rightmove.co.uk](http://www.rightmove.co.uk) | [www.zoopla.co.uk](http://www.zoopla.co.uk)

Property Ref: HAY405144 - 0009