

Connells

Queens Mews London Road  
Bolney Haywards Heath





### Property Description

A beautifully presented 3 Bedroom property, Situated in the village of Bolney, this property has an open plan kitchen to lounge//Diner on the ground floor, 2 large bedrooms, large family bathroom as well as the master having the ensuite on the first floor. Finally the third bedroom being at the top of the house on the second floor.

The Location of this property is perfect for commuters who needs access to the A23/M23 as well as wanting the benefits of a quiet village.

### Ground Floor

#### Lounge/Diner

19' 5" (Max) x 14' 3" (Max) ( 5.92m (Max) x 4.34m (Max) )

#### Kitchen

12' 5" (Max) x 7' 8" (Max) ( 3.78m (Max) x 2.34m (Max) )

#### Hall

6' 7" (Max) x 10' 9" (Max) ( 2.01m (Max) x 3.28m (Max) )

#### Cloak Room

2' 10" (Max) x 5' 9" (Max) ( 0.86m (Max) x 1.75m (Max) )

### First Floor

#### Bedroom 1

12' 3" (Max) x 11' 5" (Max) ( 3.73m (Max) x 3.48m (Max) )

#### En-Suite

6' 7" (Max) x 5' 8" (Max) ( 2.01m (Max) x 1.73m (Max) )

#### Bedroom 3

12' 2" (Max) x 10' 7" (Max) ( 3.71m (Max) x 3.23m (Max) )

#### Bathroom

6' 7" (Max) x 6' 7" (Max) ( 2.01m (Max) x 2.01m (Max) )

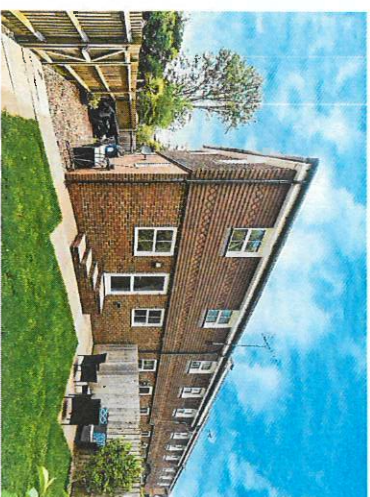
### Second Floor

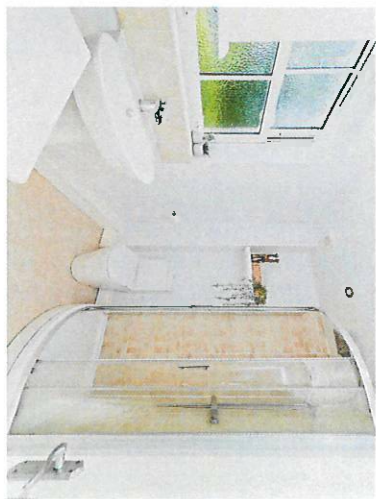
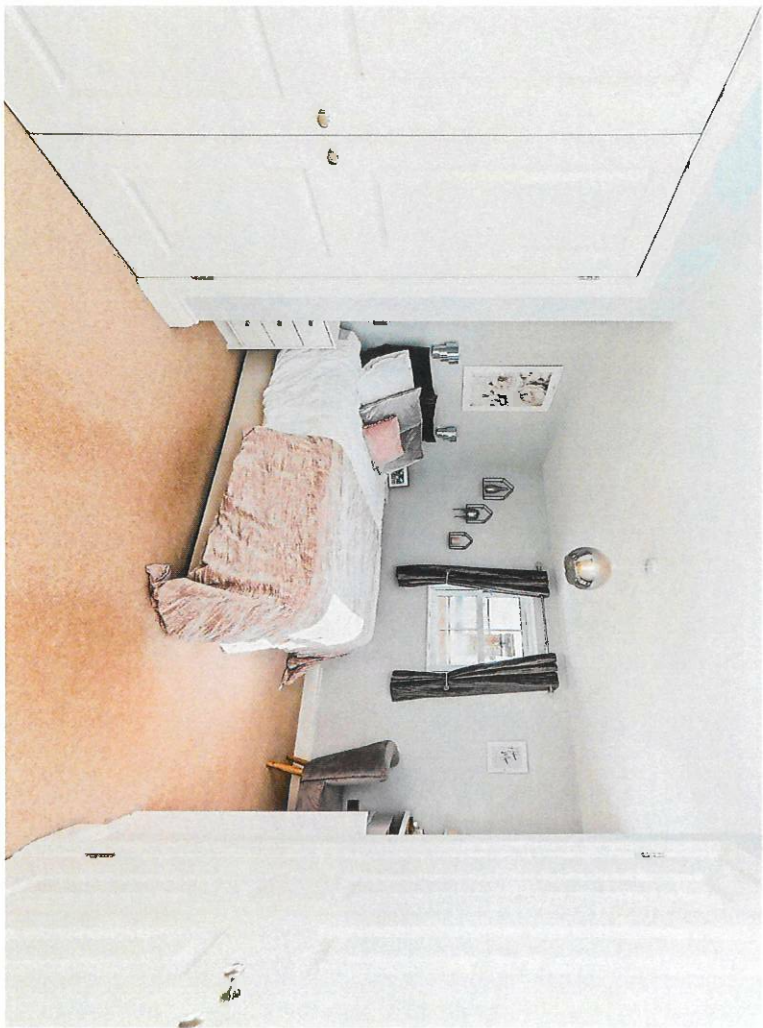
#### Bedroom 2

11' 5" (Max) x 16' 4" (Max) ( 3.48m (Max) x 4.98m (Max) )

#### Garden

### Parking

















EPC Rating: C

Tenure: Freehold

**view this property online [connells.co.uk/Property/HAY405146](http://connells.co.uk/Property/HAY405146)**

1. MONEY LAUNDERING REGULATIONS: Intending purchasers will be asked to produce identification documentation at a later stage and we would ask for your co-operation in order that there will be no delay in agreeing the sale. 2. These particulars do not constitute part or all of an offer or contract. 3. The measurements indicated are supplied for guidance only and as such must be considered incorrect. Potential buyers are advised to recheck measurements before committing to any expense. 4. We have not tested any apparatus, equipment, fixtures, fittings or services and it is in the buyers interest to check the working condition of any appliances.

Connells Residential is registered in England and Wales under company number 1488613. Registered Office is Cumbria House, 16-20 Hockliffe Street, Leighton Buzzard, Bedfordshire, LU7 1GN. VAT Registration Number is 500 2481 05.

**See all our properties at [www.connells.co.uk](http://www.connells.co.uk) | [www.rightmove.co.uk](http://www.rightmove.co.uk) | [www.zoopla.co.uk](http://www.zoopla.co.uk)**

Property Ref: HAY405146 - 0011