



Connells

Wilton Villas Bretts Orchard
Balcombe Haywards Heath



Property Description

A well presented one bedroom ground floor maisonette in an excellent location. This maisonette forms part of an exclusive over 60's development in the heart of Balcombe. Village facilities include convenient shops and stores, tea room, village pub, social club, church, sports clubs, primary school and a mainline station.

Bedroom

11' 8" x 11' 9" (3.56m x 3.58m)

Kitchen

8' 10" x 8' (2.69m x 2.44m)

Bathroom

10' 5" x 7' 3" (3.17m x 2.21m)

Hall

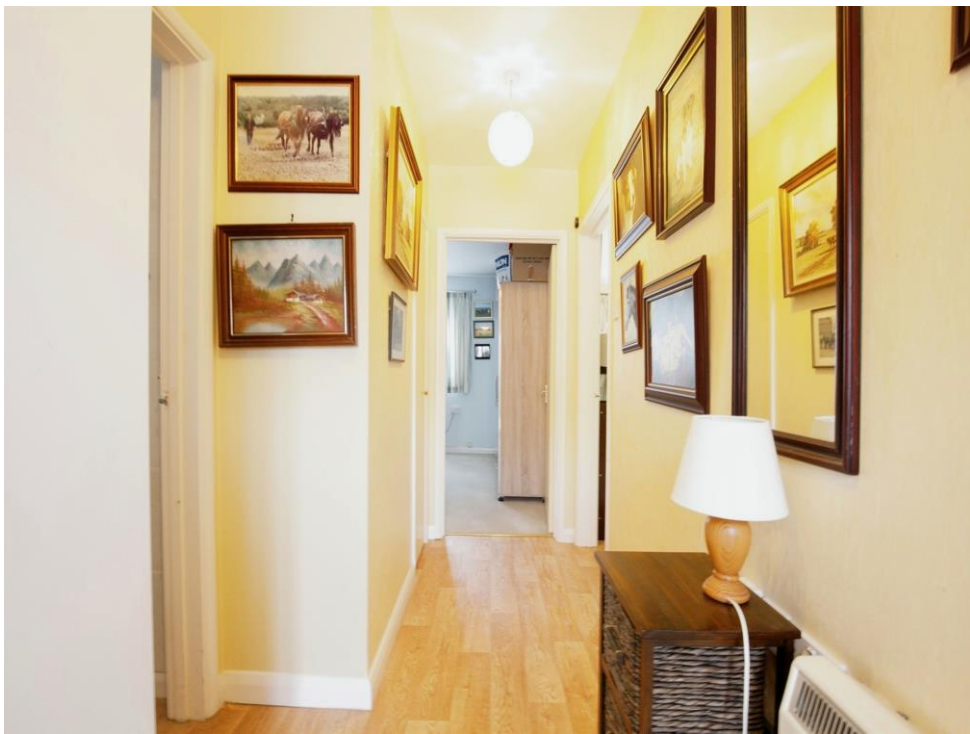
13' 2" max x 7' 5" max (4.01m max x 2.26m max)

Living Room

16' 1" x 11' 6" (4.90m x 3.51m)











This floor plan is for illustrative purposes only. It is not drawn to scale. Any measurements, floor areas (including any total floor area), openings and orientation are approximate. No details are guaranteed, they cannot be relied upon for any purpose and they do not form part of any agreement. No liability is taken for any error, omission or misstatement. A party must rely upon its own inspection(s). Powered by www.focalagent.com

To view this property please contact Connells on

T 01444 441 441
E haywardsheath@connells.co.uk

135 South Road
HAYWARDS HEATH RH16 4LY

EPC Rating: Awaited

Tenure: Leasehold

view this property online connells.co.uk/Property/HAY405127

This is a Leasehold property with details as follows; Term of Lease 999 years from 25 Mar 1997. Should you require further information please contact the branch. Please Note additional fees could be incurred for items such as

1. MONEY LAUNDERING REGULATIONS Intending purchasers will be asked to produce identification documentation at a later stage and we would ask for your co-operation in order that there will be no delay in agreeing the sale. 2. These particulars do not constitute part or all of an offer or contract. 3. The measurements indicated are supplied for guidance only and as such must be considered incorrect. Potential buyers are advised to recheck measurements before committing to any expense. 4. We have not tested any apparatus, equipment, fixtures, fittings or services and it is in the buyers interest to check the working condition of any appliances.

Connells Residential is registered in England and Wales under company number 1489613, Registered Office is Cumbria House, 16-20 Hockliffe Street, Leighton Buzzard, Bedfordshire, LU7 1GN. VAT Registration Number is 500 2481 05.

See all our properties at www.connells.co.uk | www.rightmove.co.uk | www.zoopla.co.uk

Property Ref: HAY405127 - 0004

