



Connells

Parham Cottages Kleinwort Close
Haywards Heath

Parham Cottages Kleinwort Close Haywards Heath RH16 4XG

for sale offers in excess of
£500,000



Property Description

The accommodation, set within Anchors Hurst Place comprises entrance hallway with downstairs shower leading through to both the kitchen breakfast room, with its stylish modern kitchen that combines first class integrated appliances with excellent storage and the bright spacious living room which stretches across the width of the property and opens to a private balcony and to stunning gardens. Upstairs there are two bedrooms, both with excellent built in wardrobes that have been recently installed by the current owners to maximise storage. There is a luxury shower room with walk-in level access shower and a second bathroom.

Hurst Place is a beautiful development of luxurious apartments and Courtyard Houses and provides first-class living accommodation and facilities. The homes are filled with helpful touches that make life easier. Kitchen worktops and wall units are mounted lower, storage drawers replace awkward cupboards, with plug sockets raised higher – all for your increased comfort and convenience. Hurst Place has The dynamic 'Vista' café, hair and beauty salon, Library and Entertainment room are just a few examples that make this distinctly different to any other retirement development.

Hurst Place can also offer Anchor Home care, on-site care services, a Supporting Manager and Anchorcall, a 24 hr response system for residents.

The sale of this property is subject to grant of probate. Please seek an update from the branch with regards to the potential

timeframes.

Lounge

17' 9" x 9' 8" (5.41m x 2.95m)

Kitchen/Dining Room

17' 2" x 8' 2" (5.23m x 2.49m)

Shower Room

6' 2" x 5' 6" (1.88m x 1.68m)

Bedroom 1

15' 9" x 9' 8" (4.80m x 2.95m)

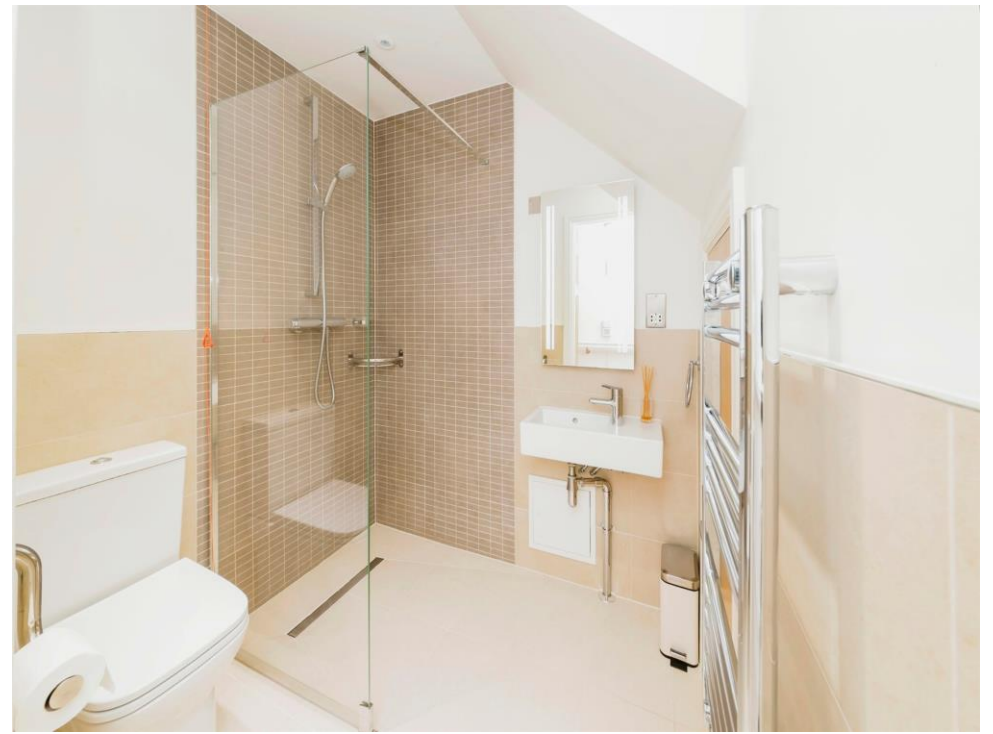
Bedroom 2

14' 9" x 9' 9" (4.50m x 2.97m)

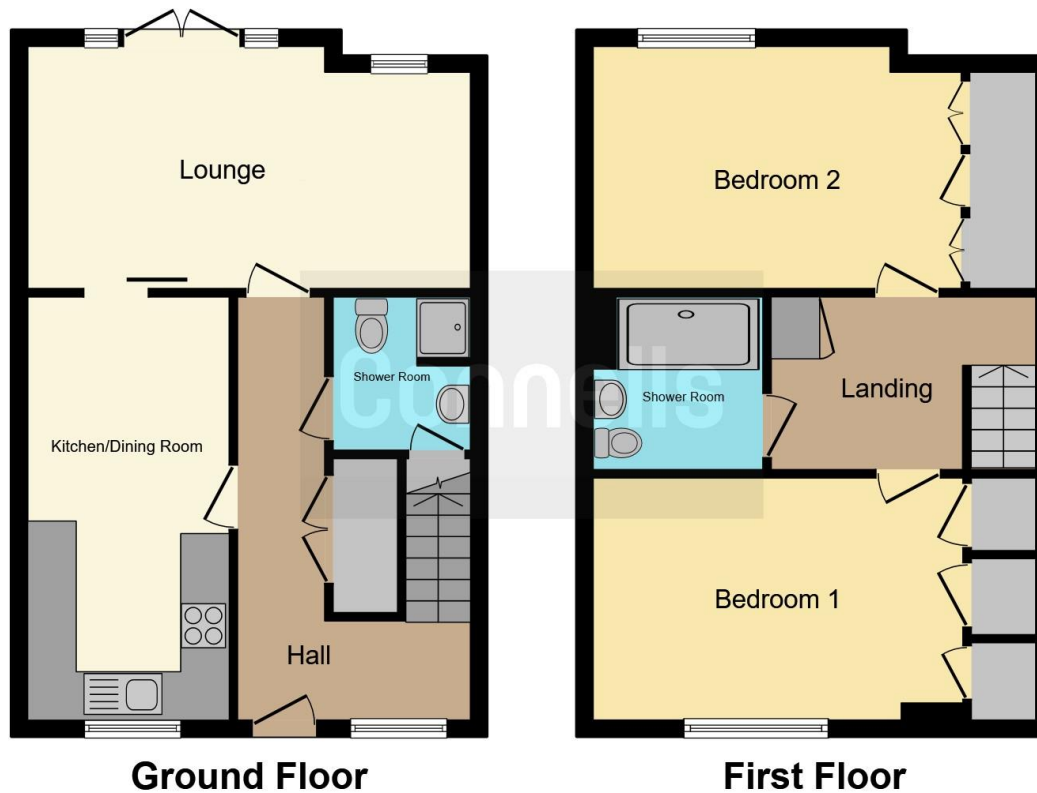
Shower Room

6' 9" x 6' 8" (2.06m x 2.03m)









This floor plan is for illustrative purposes only. It is not drawn to scale. Any measurements, floor areas (including any total floor area), openings and orientation are approximate. No details are guaranteed, they cannot be relied upon for any purpose and they do not form part of any agreement. No liability is taken for any error, omission or misstatement. A party must rely upon its own inspection(s). Powered by www.focalagent.com

To view this property please contact Connells on

T 01444 441 441
E haywardsheath@connells.co.uk

135 South Road
 HAYWARDS HEATH RH16 4LY

EPC Rating: B

Tenure: Leasehold

view this property online connells.co.uk/Property/HAY405115

This is a Leasehold property with details as follows; Term of Lease 125 years from 01 Sep 2016. Should you require further information please contact the branch. Please Note additional fees could be incurred for items such as



1. MONEY LAUNDERING REGULATIONS Intending purchasers will be asked to produce identification documentation at a later stage and we would ask for your co-operation in order that there will be no delay in agreeing the sale. 2. These particulars do not constitute part or all of an offer or contract. 3. The measurements indicated are supplied for guidance only and as such must be considered incorrect. Potential buyers are advised to recheck measurements before committing to any expense. 4. We have not tested any apparatus, equipment, fixtures, fittings or services and it is in the buyers interest to check the working condition of any appliances.

Connells Residential is registered in England and Wales under company number 1489613, Registered Office is Cumbria House, 16-20 Hockliffe Street, Leighton Buzzard, Bedfordshire, LU7 1GN. VAT Registration Number is 500 2481 05.

See all our properties at www.connells.co.uk | www.rightmove.co.uk | www.zoopla.co.uk

Property Ref: HAY405115 - 0010