



Connells

Kingsmead Place
Broadbridge Heath Horsham

Kingsmead Place Broadbridge Heath Horsham RH12 3TA

for sale
£280,000



Property Description

Presented in excellent condition throughout, this attractive one-bedroom terrace house offers modern, low maintenance living and is ready for immediate occupation, perfect for first time buyers, downsizers or investors.

The property features a bright and well-proportioned lounge diner, creating a comfortable space to relax or entertain. The contemporary interior continues upstairs, where the double bedroom benefits from built in wardrobes, providing practical storage without compromising space.

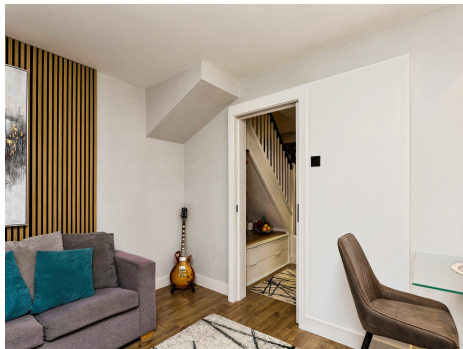
Finished to a modern standard throughout, this home truly offers a move straight in opportunity. Externally the property benefits from allocated parking, while its village location provides a peaceful setting with a strong sense of community.

Broadbridge Heath

Broadbridge Heath is a village located in the Horsham. The village is situated on the A24 road, which connects London to Worthing. The village has a population of around 6,000 people and is known for its beautiful countryside, historic buildings, and excellent transport links. Broadbridge Heath is a popular destination for tourists and visitors who come to explore the village's many attractions.

One of the most popular attractions in Broadbridge Heath is the Broadbridge Heath Leisure Centre. The centre offers a range of facilities, including a swimming pool, gym, sports hall, and fitness classes. The leisure centre is a popular destination for families, sports enthusiasts, and people looking to stay active and healthy. The centre also hosts a range of events and activities throughout the year, including swimming lessons, fitness classes, and sports tournaments.

Another popular attraction in Broadbridge Heath is the St John the Evangelist Church. The church is a Grade II listed building and dates back to the 19th century. The church is known for its beautiful stained glass windows, intricate carvings, and stunning architecture. The church is a popular destination for visitors who come to admire its beauty and learn about its history. The church also hosts a range of events throughout the year, including concerts, exhibitions, and community events.

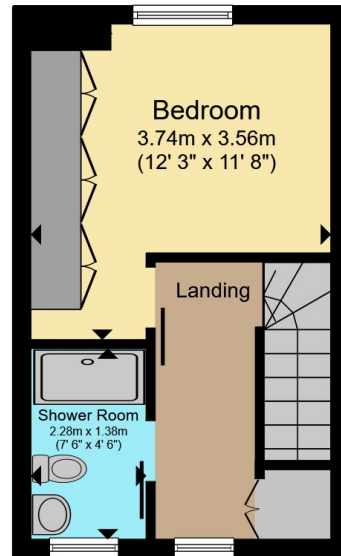




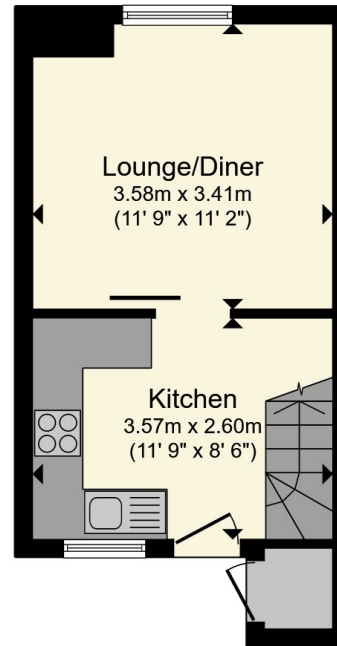




Residential Sales & Lettings | Mortgage Services | Conveyancing | Surveyors | Land & New Homes



First Floor



Ground Floor

Total floor area 45.0 m² (484 sq.ft.) approx

This floor plan is for illustrative purposes only. It is not drawn to scale. Any measurements, floor areas (including any total floor area), openings and orientation are approximate. No details are guaranteed, they cannot be relied upon for any purpose and they do not form part of any agreement. No liability is taken for any error, omission or misstatement. A party must rely upon its own inspection(s). Powered by www.propertybox.io



To view this property please contact Connells on

T 01403 256 331
E horsham@connells.co.uk

31-31A Carfax
HORSHAM RH12 1EE

EPC Rating: C Council Tax
Band: B

Tenure: Freehold

view this property online connells.co.uk/Property/HS407308



1. MONEY LAUNDERING REGULATIONS Intending purchasers will be asked to produce identification documentation at a later stage and we would ask for your co-operation in order that there will be no delay in agreeing the sale. 2. These particulars do not constitute part or all of an offer or contract. 3. The measurements indicated are supplied for guidance only and as such must be considered incorrect. Potential buyers are advised to recheck measurements before committing to any expense. 4. We have not tested any apparatus, equipment, fixtures, fittings or services and it is in the buyers interest to check the working condition of any appliances.

Connells Residential is registered in England and Wales under company number 1489613, Registered Office is Cumbria House, 16-20 Hockliffe Street, Leighton Buzzard, Bedfordshire, LU7 1GN. VAT Registration Number is 500 2481 05.

See all our properties at www.connells.co.uk | www.rightmove.co.uk | www.zoopla.co.uk

Property Ref: HSH407308 - 0002