



**Connells**

Alma Cottage Worthing Road  
Dial Post Horsham



# Alma Cottage Worthing Road Dial Post Horsham RH13 8NH

for sale  
£500,000



## Property Description

Discover the potential of this characterful semi-detached property, offering flexible living space and fantastic scope for improvement. Perfect for buyers looking to add value, personalise a home, or take on a rewarding project.

There are two upstairs bedrooms with an optional 3rd bedroom / family room downstairs.

The cosy lounge features a traditional fireplace.

The kitchen breakfast room is practical but with room to modernise.

The bathroom is downstairs and is a great size providing potential to reconfigure.

The garden needs some real attention but provides ideal potential for some good outside space.

To the front there is space to create off road parking.

Situated in a popular village with nearby shops and schools and local amenities and beautiful countryside walks.

## Dial Post

Dial Post is a small village located in the Horsham district of West Sussex, England. The village is situated on the A24 road, which connects London to Worthing. Dial Post is surrounded by beautiful countryside and is a popular destination for walkers and cyclists. The village has a small population of around 300 people and is known for its peaceful and tranquil atmosphere.

One of the main attractions in Dial Post is the St. Peter's Church, which dates back to the 12th century. The church is a Grade II listed building and is known for its beautiful stained-glass windows and intricate architecture. The church is open to visitors and is a popular destination for those interested in history and architecture. The church also hosts regular services and events throughout the year.

Dial Post is also home to a number of local businesses, including a pub, a post office, and a village hall. The village hall is a popular venue for community events and is used for a variety of activities, including fitness classes, dance classes, and social events. The pub, The Crown Inn, is a traditional English pub and serves a range of food and drinks. The post office is a vital service for the local community and provides a range of postal and banking services.

Overall, Dial Post is a charming village with a strong sense of community and a rich history.





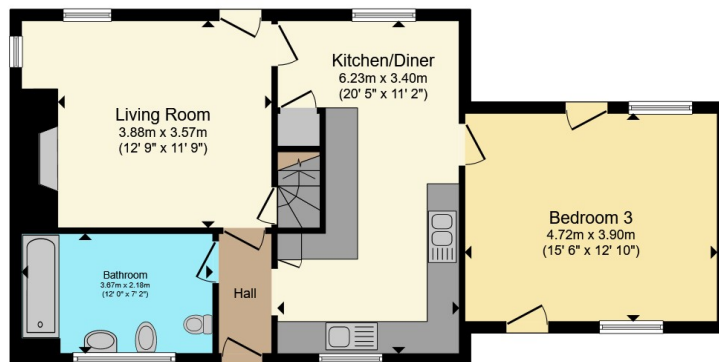




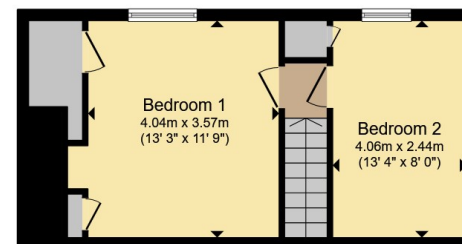








**Ground Floor**



**First Floor**

Total floor area 102.9 m<sup>2</sup> (1,108 sq.ft.) approx

This floor plan is for illustrative purposes only. It is not drawn to scale. Any measurements, floor areas (including any total floor area), openings and orientation are approximate. No details are guaranteed, they cannot be relied upon for any purpose and they do not form part of any agreement. No liability is taken for any error, omission or misstatement. A party must rely upon its own inspection(s). Powered by [www.propertybox.io](http://www.propertybox.io)



To view this property please contact Connells on

**T 01403 256 331**  
**E [horsham@connells.co.uk](mailto:horsham@connells.co.uk)**

31-31A Carfax  
 HORSHAM RH12 1EE

EPC Rating: G Council Tax  
 Band: F

Tenure: Freehold

**check out more properties at [connells.co.uk](http://connells.co.uk)**



1. MONEY LAUNDERING REGULATIONS Intending purchasers will be asked to produce identification documentation at a later stage and we would ask for your co-operation in order that there will be no delay in agreeing the sale. 2. These particulars do not constitute part or all of an offer or contract. 3. The measurements indicated are supplied for guidance only and as such must be considered incorrect. Potential buyers are advised to recheck measurements before committing to any expense. 4. We have not tested any apparatus, equipment, fixtures, fittings or services and it is in the buyers interest to check the working condition of any appliances.

Connells Residential is registered in England and Wales under company number 1489613, Registered Office is Cumbria House, 16-20 Hockliffe Street, Leighton Buzzard, Bedfordshire, LU7 1GN. VAT Registration Number is 500 2481 05.

**See all our properties at [www.connells.co.uk](http://www.connells.co.uk) | [www.rightmove.co.uk](http://www.rightmove.co.uk) | [www.zoopla.co.uk](http://www.zoopla.co.uk)**

Property Ref: HSH407391 - 0002