



Connells

Anchor Court
HORSHAM



Property Description

A well-presented two bedroom property, located within Horsham town centre just off East Street.

The accommodation comprises entrance hall, living room, kitchen, master bedroom with en suite shower room, second bedroom and bathroom.

Benefits of the property include gas fired central heating via radiators and double glazed sash style windows.

Outside further benefits include allocated parking space, lockable bin store and additional lockable storage cupboard.

Horsham

Horsham is a market town on the upper reaches of the River Arun on the fringe of the Weald in West Sussex. The town is 31 miles south south-west of London, 18.5 miles north-west of Brighton and 26 miles north-east of the county town of Chichester. Nearby towns include Crawley to the north-east and Haywards Heath and Burgess Hill to the south-east.

In the commercial centre of Horsham is an open pedestrianised square known as the Carfax where there are twice weekly Artisan markets featuring local produce. Horsham has an excellent range of shops, bars and restaurants along with 2 cinemas and a theatre. The Pavilions In The Park offers a comprehensive leisure centre with swimming pools and gym.

There are a number of excellent state and private schools in the area including Millais, Forest, Tanbridge, Bohunt, Farlington, Christ's Hospital, Pennthorpe and Cottesmore.

Ground Floor

Hall

Storage Cupboard

Stairs

Mezzanine Floor

Bedroom 1

En-Suite

Stairs

First Floor

Lounge / Diner

14' 5" (max) x 13' 3" (max)
(4.39m (max) x 4.04m (max))

Kitchen

8' 2" (max) x 7' 5" (max)
(2.49m (max) x 2.26m (max))

Bedroom 2

10' 5" (max) x 8' 8" (max)
(3.17m (max) x 2.64m (max))

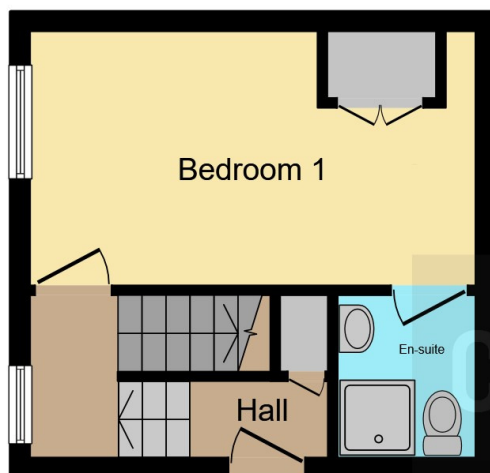
Bathroom

6' 11" (max) x 5' 8" (max)
(2.11m (max) x 1.73m (max))









Ground Floor



First Floor

This floor plan is for illustrative purposes only. It is not drawn to scale. Any measurements, floor areas (including any total floor area), openings and orientation are approximate. No details are guaranteed, they cannot be relied upon for any purpose and they do not form part of any agreement. No liability is taken for any error, omission or misstatement. A party must rely upon its own inspection(s). Powered by www.focalagent.com

To view this property please contact Connells on

T 01403 256 331
E horsham@connells.co.uk

31-31A Carfax
 HORSHAM RH12 1EE

EPC Rating: D

view this property online connells.co.uk/Property/HSH406502

Tenure: Freehold



1. MONEY LAUNDERING REGULATIONS Intending purchasers will be asked to produce identification documentation at a later stage and we would ask for your co-operation in order that there will be no delay in agreeing the sale. 2. These particulars do not constitute part or all of an offer or contract. 3. The measurements indicated are supplied for guidance only and as such must be considered incorrect. Potential buyers are advised to recheck measurements before committing to any expense. 4. We have not tested any apparatus, equipment, fixtures, fittings or services and it is in the buyers interest to check the working condition of any appliances.

Connells Residential is registered in England and Wales under company number 1489613, Registered Office is Cumbria House, 16-20 Hockliffe Street, Leighton Buzzard, Bedfordshire, LU7 1GN. VAT Registration Number is 500 2481 05.

See all our properties at www.connells.co.uk | www.rightmove.co.uk | www.zoopla.co.uk

Property Ref: HSH406502 - 0003