



Connells

The Red House Russells Crescent
Horley

The Red House Russells Crescent Horley RH6 7DN

for sale
£1,000,000



Property Description

Tucked away from the street for added privacy, this stunning 4-bedroom, 4-bathroom home on sought-after Russell Crescent offers the perfect blend of character, space, and convenience. Just a 2-minute walk to the station and both town centres, you'll have everything you need right on your doorstep while enjoying the peace of a private, set-back residence.

Inside, the home is modern throughout, with thoughtfully designed interiors and high-quality finishes. The spacious dining area is perfect for entertaining, flowing seamlessly into the stylish kitchen and living spaces.

Each of the four bedrooms is generously sized, with ample storage and en-suite bathrooms, offering comfort and privacy for the whole family.

Step outside into a beautiful private garden, ideal for relaxing or entertaining guests. The property also boasts a garage, driveway, and plenty of curb appeal.



Whether you're upsizing or looking for a forever family home in a prime location, this property truly has it all.

Entrance Hall

14' 10" x 8' 10" (4.52m x 2.69m)

Downstairs Shower Room

Cloakroom

Lounge

14' 9" into bay x 13' 11" (4.50m into bay x 4.24m)

Dining Room

18' 3" x 14' (5.56m x 4.27m)

Reception Room

14' 1" x 11' 3" (4.29m x 3.43m)

Kitchen

17' 8" x 12' 8" (5.38m x 3.86m)

Boot Room

7' 3" x 6' 2" (2.21m x 1.88m)

Utility Room

Landing

Bedroom One

13' 5" x 12' 5" (4.09m x 3.78m)

En Suite

Bedroom Two

16' 3" x 14' 3" (4.95m x 4.34m)

Bedroom Three

14' 3" x 10' 11" (4.34m x 3.33m)

Bathroom

Second Floor

Bedroom Four

16' 4" max x 9' max (4.98m max x 2.74m max)

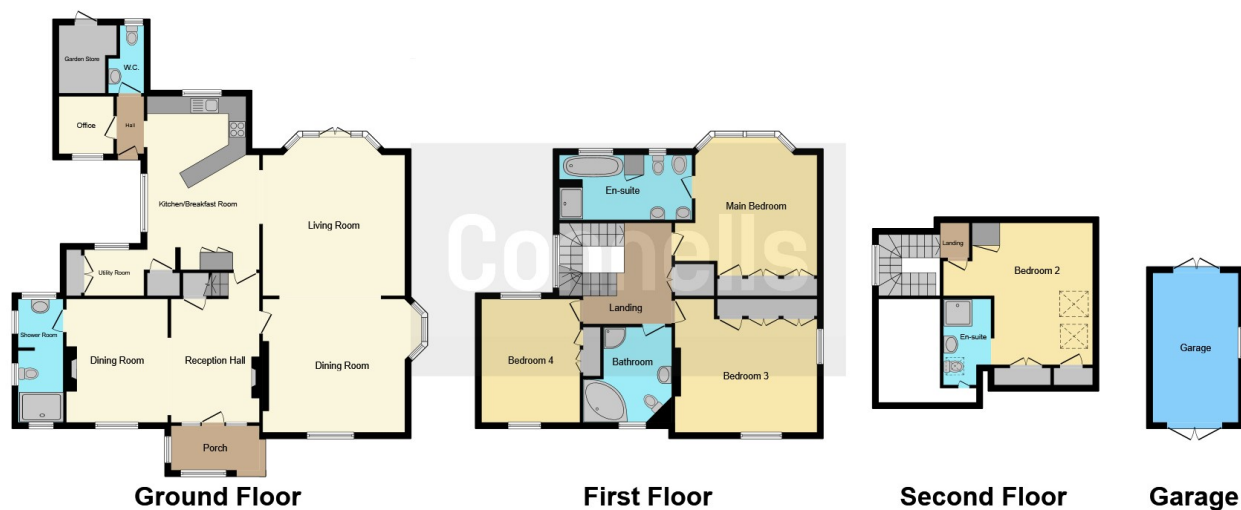
En Suite

Rear Garden









This floor plan is for illustrative purposes only. It is not drawn to scale. Any measurements, floor areas (including any total floor area), openings and orientation are approximate. No details are guaranteed, they cannot be relied upon for any purpose and they do not form part of any agreement. No liability is taken for any error, omission or misstatement. A party must rely upon its own inspection(s). Powered by www.focalagent.com

To view this property please contact Connells on

T 01293 785 346
E horley@connells.co.uk

30 High Street
 HORLEY RH6 7BB

EPC Rating: E Council Tax
 Band: G

Tenure: Freehold

view this property online connells.co.uk/Property/HLY404720



1. MONEY LAUNDERING REGULATIONS Intending purchasers will be asked to produce identification documentation at a later stage and we would ask for your co-operation in order that there will be no delay in agreeing the sale. 2. These particulars do not constitute part or all of an offer or contract. 3. The measurements indicated are supplied for guidance only and as such must be considered incorrect. Potential buyers are advised to recheck measurements before committing to any expense. 4. We have not tested any apparatus, equipment, fixtures, fittings or services and it is in the buyers interest to check the working condition of any appliances.

Connells Residential is registered in England and Wales under company number 1489613, Registered Office is Cumbria House, 16-20 Hockliffe Street, Leighton Buzzard, Bedfordshire, LU7 1GN. VAT Registration Number is 500 2481 05.

See all our properties at www.connells.co.uk | www.rightmove.co.uk | www.zoopla.co.uk

Property Ref: HLY404720 - 0002