



Connells

Reigate Road
Hookwood Horley

Reigate Road
Hookwood Horley RH6 0HL

for sale
£750,000



Property Description

This spacious and beautifully presented four-bedroom detached bungalow is located in the sought-after area of Hookwood, offering a blend of modern living and comfortable, flexible space.

The property features a large lounge with a striking wood-burning stove, creating a cozy yet contemporary atmosphere. The modern kitchen/diner is perfect for family meals and entertaining, equipped with integrated appliances and a separate utility room for added convenience.

A highlight of the home is the generous conservatory, which floods the space with natural light and offers direct access to the well-maintained rear garden, perfect for outdoor relaxation.

The bungalow comprises four well-proportioned bedrooms, with the master benefiting from an en-suite shower room for added privacy and luxury.

In addition to the main living space, there is a self-contained two-storey annex attached to the property.

This offers further versatile accommodation, complete with a bedroom, shower room, and separate living area - ideal for guests, extended family, or as a rental opportunity.

The property is set on a generous plot, with a gated driveway providing ample parking space for multiple vehicles.

This home combines comfort, style, and practicality, all within a peaceful location, making it an excellent choice for family living.



Entrance Hall

Double glazed door to front, Amtico flooring, radiator

Lounge

16' x 14' 9" (4.88m x 4.50m)

Double glazed window to front, open fireplace, wall lights, TV point, radiator

Kitchen

16' 11" x 19' 8" (5.16m x 5.99m)

A fitted kitchen with a range of base and eye level units, double glazed window to side, stainless steel sink drainer, electric oven and hob, work surfaces, tiled splashback surround, Amtico flooring, TV point, radiator

Utility Room

7' 10" x 6' 7" (2.39m x 2.01m)

A range of fitted base and eye level units, double glazed window to side, cupboard, radiator, space for washing machine

Conservatory

14' 1" x 25' (4.29m x 7.62m)

UPVC conservatory, double glazed, lights, TV point

Bedroom One

16' 1" x 13' 9" (4.90m x 4.19m)

Double glazed window to rear, built in wardrobes, TV point, radiator

En Suite

Double glazed window to side, shower cubicle, low level WC, wash hand basin, fully tiled, radiator

Bedroom Two

16' 1" x 8' 10" (4.90m x 2.69m)

Double glazed window to rear, TV point, radiator

Bedroom Three

10' 1" x 9' 11" (3.07m x 3.02m)

Double glazed window to front, fitted wardrobes, TV point, radiator

Bedroom Four

12' 4" x 10' (3.76m x 3.05m)

Double glazed window to side, radiator

Annex

Ground Floor

Kitchenette with lounge space, shower room with shower cubicle, wash hand basin, W.C

First Floor

Bedroom Five

Double glazed window to rear, eaves storage

Front Garden

Driveway, parking for several cars

Rear Garden

Laid to lawn, pergola, timber built shed, garage, wooden fence borders

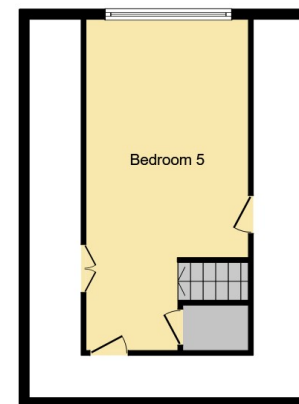








Ground Floor



First Floor

This floor plan is for illustrative purposes only. It is not drawn to scale. Any measurements, floor areas (including any total floor area), openings and orientation are approximate. No details are guaranteed, they cannot be relied upon for any purpose and they do not form part of any agreement. No liability is taken for any error, omission or misstatement. A party must rely upon its own inspection(s). Powered by www.focalagent.com

To view this property please contact Connells on

T 01293 785 346
E horley@connells.co.uk

30 High Street
HORLEY RH6 7BB

EPC Rating: D Council Tax
Band: F

Tenure: Freehold

view this property online connells.co.uk/Property/HLY404500



1. MONEY LAUNDERING REGULATIONS Intending purchasers will be asked to produce identification documentation at a later stage and we would ask for your co-operation in order that there will be no delay in agreeing the sale. 2. These particulars do not constitute part or all of an offer or contract. 3. The measurements indicated are supplied for guidance only and as such must be considered incorrect. Potential buyers are advised to recheck measurements before committing to any expense. 4. We have not tested any apparatus, equipment, fixtures, fittings or services and it is in the buyers interest to check the working condition of any appliances.

Connells Residential is registered in England and Wales under company number 1489613, Registered Office is Cumbria House, 16-20 Hockliffe Street, Leighton Buzzard, Bedfordshire, LU7 1GN. VAT Registration Number is 500 2481 05.

See all our properties at www.connells.co.uk | www.rightmove.co.uk | www.zoopla.co.uk

Property Ref: HLY404500 - 0005