



Connells

Southlands Vicarage Lane
Horley

Southlands Vicarage Lane Horley RH6 8AP

for sale
£190,000



Property Description

Situated in a convenient location nearby to Horley town centre, Horley train station and other public transport links, this one-bedroom second floor flat is an ideal purchase for first time buyers or property investors looking for something "ready to go". Majority of the property has been redecorated with a fresh coat of paint and carpets.

In brief, the property comprises of an entrance hall, bright lounge and separate kitchen, double bedroom and family bathroom.

The property comes with an allocated parking space in the communal car park and well-kept communal garden areas.

Entrance Hall

Storage cupboard, airing cupboard housing megaflow tank

Lounge

18' 8" max x 13' 4" max (5.69m max x 4.06m max)

Double glazed window to front, radiator

Kitchen

7' 7" x 6' 2" (2.31m x 1.88m)

Double glazed window to front, eye level and base units, work surfaces, sink with drainer, electric hob with extractor fan over, electric oven, space and plumbing for washing machine, space for fridge/freezer

Bedroom One

13' 2" x 9' 5" (4.01m x 2.87m)

Double glazed window to rear, built in wardrobes, electric radiator

Bathroom

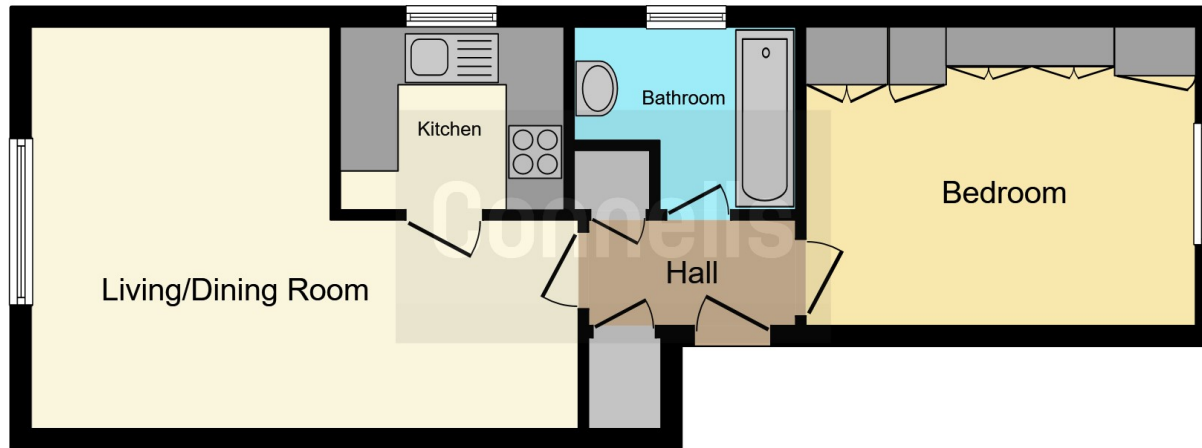
Bath with shower over, wash hand basin, W.C, double glazed window to rear











This floor plan is for illustrative purposes only. It is not drawn to scale. Any measurements, floor areas (including any total floor area), openings and orientation are approximate. No details are guaranteed, they cannot be relied upon for any purpose and they do not form part of any agreement. No liability is taken for any error, omission or misstatement. A party must rely upon its own inspection(s). Powered by www.focalagent.com

To view this property please contact Connells on

T 01293 785 346
E horley@connells.co.uk

30 High Street
HORLEY RH6 7BB

EPC Rating: C

Tenure: Leasehold

view this property online connells.co.uk/Property/HLY404454

This is a Leasehold property with details as follows; Term of Lease 125 years from 01 Oct 1989. Should you require further information please contact the branch. Please Note additional fees could be incurred for items such as



1. MONEY LAUNDERING REGULATIONS Intending purchasers will be asked to produce identification documentation at a later stage and we would ask for your co-operation in order that there will be no delay in agreeing the sale. 2. These particulars do not constitute part or all of an offer or contract. 3. The measurements indicated are supplied for guidance only and as such must be considered incorrect. Potential buyers are advised to recheck measurements before committing to any expense. 4. We have not tested any apparatus, equipment, fixtures, fittings or services and it is in the buyers interest to check the working condition of any appliances.

Connells Residential is registered in England and Wales under company number 1489613, Registered Office is Cumbria House, 16-20 Hockliffe Street, Leighton Buzzard, Bedfordshire, LU7 1GN. VAT Registration Number is 500 2481 05.

See all our properties at www.connells.co.uk | www.rightmove.co.uk | www.zoopla.co.uk

Property Ref: HLY404454 - 0002