



Connells

Radstock Way
Merstham



Enjoying views across Furzefield woods from the front aspect and positioned within walking distance of Merstham train station, local schools and shops this family home is spacious throughout and offers contemporary comfort,

The heart of the home resides in its inviting through reception space, where abundant natural light pours in through multiple windows highlighting the restrained decor and creating an inviting ambiance for relaxation and entertainment.

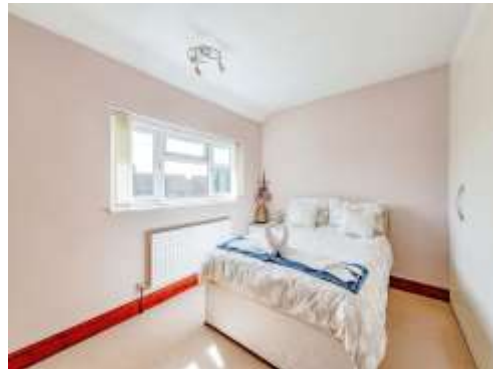
To the rear of the ground floor you will find the kitchen which is beautifully modern and bright. Refitted in recent years with high gloss white units, integrated appliances and contrasting granite work surfaces.

Upstairs there are three double bedrooms each offering built-in storage solutions to maximise space and convenience meets style within the refitted shower room. It offers both practicality and aesthetic pleasure for everyday routines.

Outside, the garden has been a real labour of love and it beckons those who enjoy outdoor entertaining in the warmer months. Attractively landscaped, the covered seating area with power provides a serene retreat for alfresco dining or for simply unwinding.

To the front of the home there is a low maintenance walled garden and a shared driveway which provides access to parking.

Offering potential for expansion both outwards and upwards into the loft space, providing a blank canvas for homeowners to tailor the space according to their vision, subject to relevant permissions.



Ground Floor

Living Room

16' 6" x 11' 2" (5.03m x 3.40m)

Dining Room

9' 1" x 8' 10" (2.77m x 2.69m)

Kitchen

13' 4" x 8' 11" (4.06m x 2.72m)

First Floor

Landing

Bedroom One

13' 7" x 9' 11" (4.14m x 3.02m)

Bedroom Two

12' 2" Plus wardrobes x 8' 9" Plus wardrobes (3.71m Plus wardrobes x 2.67m Plus wardrobes)

Bedroom Three

11' 9" Max x 9' 1" Max (3.58m Max x 2.77m Max)

Shower Room

8' Into shower cubicle x 5' 5" (2.44m Into shower cubicle x 1.65m)

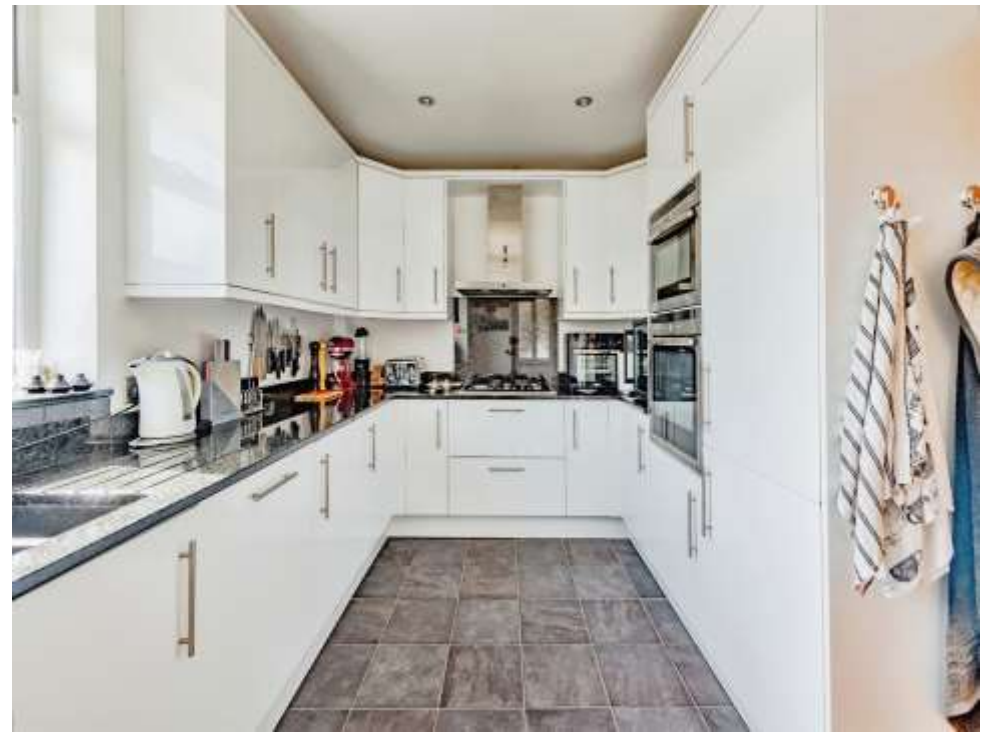
Outside

Rear Garden

Front Garden

Parking









This floor plan is for illustrative purposes only. It is not drawn to scale. Any measurements, floor areas (including any total floor area), openings and orientation are approximate. No details are guaranteed, they cannot be relied upon for any purpose and they do not form part of any agreement. No liability is taken for any error, omission or misstatement. A party must rely upon its own inspection(s). Powered by www.focalagent.com

To view this property please contact Connells on

T 01737 774 277
E redhill@connells.co.uk

43 Station Road
 REDHILL RH1 1QH

EPC Rating: D

Tenure: Freehold

view this property online connells.co.uk/Property/RED407539



1. MONEY LAUNDERING REGULATIONS Intending purchasers will be asked to produce identification documentation at a later stage and we would ask for your co-operation in order that there will be no delay in agreeing the sale. 2. These particulars do not constitute part or all of an offer or contract. 3. The measurements indicated are supplied for guidance only and as such must be considered incorrect. Potential buyers are advised to recheck measurements before committing to any expense. 4. We have not tested any apparatus, equipment, fixtures, fittings or services and it is in the buyers interest to check the working condition of any appliances.

Connells Residential is registered in England and Wales under company number 1489613, Registered Office is Cumbria House, 16-20 Hockliffe Street, Leighton Buzzard, Bedfordshire, LU7 1GN. VAT Registration Number is 500 2481 05.

See all our properties at www.connells.co.uk | www.rightmove.co.uk | www.zoopla.co.uk

Property Ref: RED407539 - 0002