



Connells

Hallow Road
Worcester

Hallow Road Worcester WR2 6DF

for sale
£575,000



Property Description

Set in a highly sought-after residential location just outside Worcester city centre, this home perfectly blends contemporary style with spacious, versatile living across three floors.

The heart of the home is the expansive kitchen-diner, ideal for family gatherings and entertaining. A large balcony extends from the main living area, offering uninterrupted, panoramic views of the countryside. The property also boasts extensive living spaces, perfect for both relaxation and socialising.

The tiered garden is a true outdoor retreat, featuring a patio, a lush lawn, and a summer house complete with a hot tub, ideal for unwinding while enjoying the scenic backdrop. Ample parking is provided with a double garage and space for several vehicles.

With four generously sized bedrooms, this home is perfect for growing families or those seeking extra space. Viewing is essential to fully appreciate all that this beautiful property has to offer.

Living Room

21' 7" x 12' 3" (6.58m x 3.73m)
Rear aspect good sized reception room, with patio doors to balcony overlooking garden and fields beyond. Feature fireplace.

Kitchen

8' 1" x 15' 7" (2.46m x 4.75m)
Forward facing with range of wall and base mounted units. Integrated appliances, down lights and archway to dining area.

Dining Room

9' 6" x 11' 8" (2.90m x 3.56m)
Rear facing, double glazed windows, downlights and double doors leading into living room.

Middle Floor

Ceiling lights with doors leading to bedrooms, utility and store room. Stairs down to ground floor.

Bedroom 1

14' 8" x 9' 8" (4.47m x 2.95m)
Double bedroom, fitted storage units and access to en-suite

Bedroom 2

11' 6" x 11' 9" (3.51m x 3.58m)
Rear facing with views of gardens and beyond. Range of fitted storage units.

Bedroom 3

10' 2" x 11' 6" (3.10m x 3.51m)

Bedroom 4

10' 2" x 6' 2" (3.10m x 1.88m)

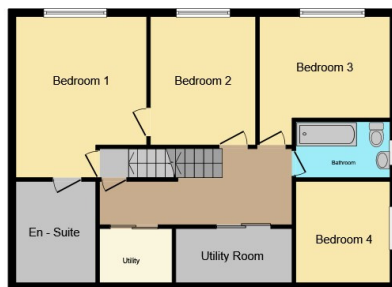
Ground Floor

Large ground floor space currently used with three separate purposes, an excellent space for a vast open living room with access to garden, and summer house.

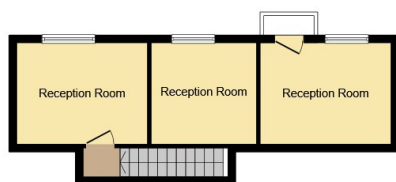




Ground Floor



First Floor



Second Floor

This floor plan is for illustrative purposes only. It is not drawn to scale. Any measurements, floor areas (including any total floor area), openings and orientation are approximate. No details are guaranteed, they cannot be relied upon for any purpose and they do not form part of any agreement. No liability is taken for any error, omission or misstatement. A party must rely upon its own inspection(s). Powered by www.focalagent.com

To view this property please contact Connells on

T 01905 611 411
E worcester@connells.co.uk

3 Foregate Street
 WORCESTER WR1 1DB

EPC Rating: C

view this property online connells.co.uk/Property/WOR315019



Tenure: Freehold



1. MONEY LAUNDERING REGULATIONS Intending purchasers will be asked to produce identification documentation at a later stage and we would ask for your co-operation in order that there will be no delay in agreeing the sale. 2. These particulars do not constitute part or all of an offer or contract. 3. The measurements indicated are supplied for guidance only and as such must be considered incorrect. Potential buyers are advised to recheck measurements before committing to any expense. 4. We have not tested any apparatus, equipment, fixtures, fittings or services and it is in the buyers interest to check the working condition of any appliances.

Connells Residential is registered in England and Wales under company number 1489613, Registered Office is Cumbria House, 16-20 Hockliffe Street, Leighton Buzzard, Bedfordshire, LU7 1GN. VAT Registration Number is 500 2481 05.

See all our properties at www.connells.co.uk | www.rightmove.co.uk | www.zoopla.co.uk

Property Ref: WOR315019 - 0005