





# St Swithins House Trinity Street Worcester WR1 2PW

for sale offers over  
**£130,000**



## Property Description

The properties offer spacious, neutral open plan kitchen/ living room with integrated fridge/ freezer, washing machine, oven and hob. The sleek bathrooms benefit from both bath and shower facilities and are fully fitted. These apartments are bursting with potential, have views stretching over the city and would be perfect for anyone who wants to live within the hustle and bustle of Worcester. Parking permits available subject to terms and conditions.

## **Accommodation Comprises Of:**

Communal Entrance Hall, Private Entrance Hall, Living room / Kitchen, Two Bedrooms and Bathroom.

## Ground Floor

Door leading to the communal Entrance Hall

## **Communal Entrance Hall**

Stairs leading to first floor.

## **Private Entrance Hall**

Wooden front door, doors leading to living room/kitchen, bedrooms one and two and bathroom.

## **Feature Open Plan**

## **Living Room / Kitchen**

17' 5" x 14' 7" ( 5.31m x 4.45m )

Five double glazed ceiling high windows overlooking the front and side, wall mounted storage heater, TV aerial point, telephone point, 1 1/2 bowl stainless steel sink with modern mixer tap, built in halogen hob and electric oven, stainless steel cooker hob, integrated full size fridge freezer, range of eye level and floor mounted units and drawers, built in wine rack, recess spot lights throughout.

## **Bedroom One**

9' 1" x 12' 3" ( 2.77m x 3.73m )

Recessed spotlights, wall mounted storage heater.

## **Bedroom Two**

12' 5" x 6' 6" ( 3.78m x 1.98m )

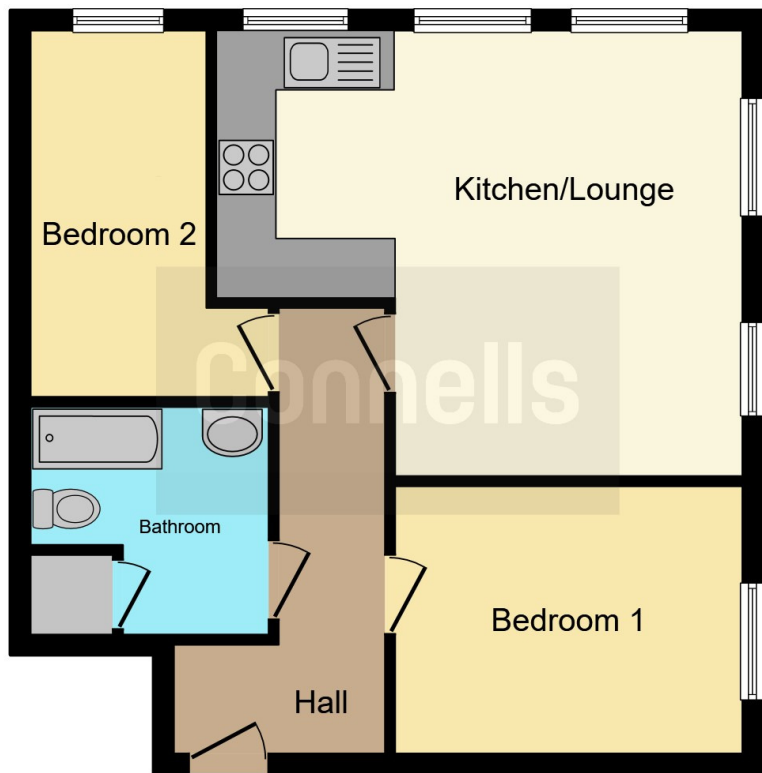
Recessed spotlights, wall mounted storage heater.

## **Bathroom**

P shaped bath with shower screen, electric shower, modern mixer tap, low level WC, pedestal hand basin, ladder style towel rail, fully tiled, ceramic floor







This floor plan is for illustrative purposes only. It is not drawn to scale. Any measurements, floor areas (including any total floor area), openings and orientation are approximate. No details are guaranteed, they cannot be relied upon for any purpose and they do not form part of any agreement. No liability is taken for any error, omission or misstatement. A party must rely upon its own inspection(s). Powered by [www.focalagent.com](http://www.focalagent.com)

To view this property please contact Connells on

**T 01905 611 411**  
**E [worcester@connells.co.uk](mailto:worcester@connells.co.uk)**

3 Foregate Street  
 WORCESTER WR1 1DB

**EPC Rating: D**

**view this property online [connells.co.uk/Property/WOR314833](http://connells.co.uk/Property/WOR314833)**

This is a Leasehold property. We are awaiting further details about the Term of the lease. For further information please contact the branch. Please note additional fees could be incurred for items such as Leasehold packs.



Tenure: Leasehold



1. MONEY LAUNDERING REGULATIONS Intending purchasers will be asked to produce identification documentation at a later stage and we would ask for your co-operation in order that there will be no delay in agreeing the sale. 2. These particulars do not constitute part or all of an offer or contract. 3. The measurements indicated are supplied for guidance only and as such must be considered incorrect. Potential buyers are advised to recheck measurements before committing to any expense. 4. We have not tested any apparatus, equipment, fixtures, fittings or services and it is in the buyers interest to check the working condition of any appliances.

Connells Residential is registered in England and Wales under company number 1489613, Registered Office is Cumbria House, 16-20 Hockliffe Street, Leighton Buzzard, Bedfordshire, LU7 1GN. VAT Registration Number is 500 2481 05.

**See all our properties at [www.connells.co.uk](http://www.connells.co.uk) | [www.rightmove.co.uk](http://www.rightmove.co.uk) | [www.zoopla.co.uk](http://www.zoopla.co.uk)**

Property Ref: WOR314833 - 0009