



The Bellflower

Coppice View
Malvern, WR14 1PW

3 Bedroom Home - Plot 1

Sanctuary

The Bellflower



#mysanctuaryhome

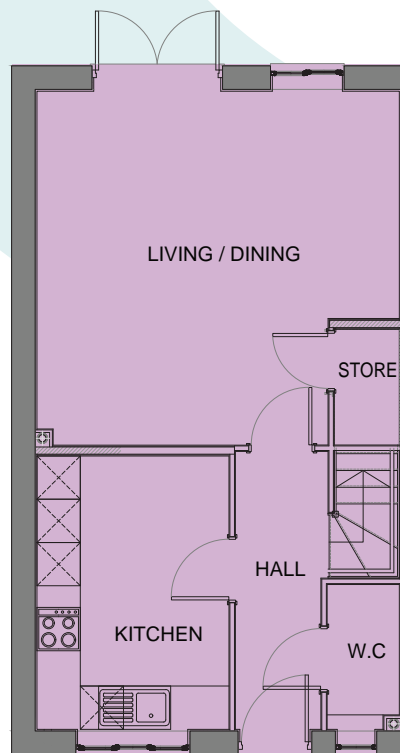
Plot 01

This three-bedroom home has a kitchen to the front of the property and benefits from a downstairs WC. Towards the rear of the property is a good-sized living room with patio doors opening out to the back garden.

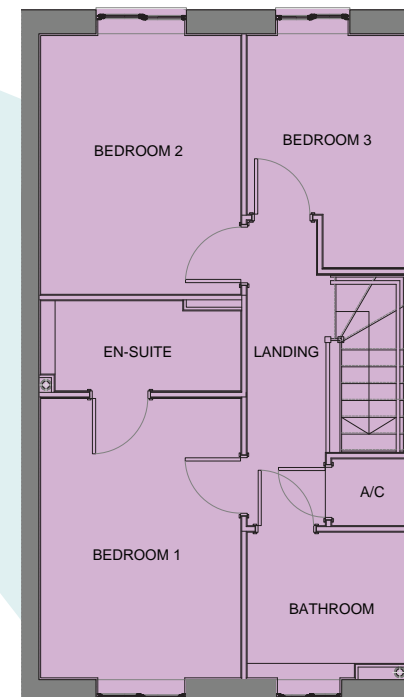
Upstairs, there is a master bedroom with en-suite and a bathroom to the front of the property. To the back, there are a further two bedrooms. This property also includes off-road parking and a garage.

	Width (m) x Length (m)	Width (feet and inches) x Length (feet and inches)
Kitchen	2.6 x 3.8	8'9" x 12'6"
Living / Dining	5 x 4.9	16'6" x 16'2"
WC	1 x 2	3'3" x 6'7"
Bedroom 1	2.7 x 3.8	9'1" x 12'8"
Ensuite	2.7 x 1.2	9'1" x 4'1"
Bedroom 2	2.7 x 3.5	9'1" x 11'8"
Bedroom 3	2.1 x 3.2	7'2" x 10'6"
Bathroom	2.1 x 2	7'2" x 6'7"

Total Area: 89m² / 957.99sqft



↑ GROUND FLOOR



↑ FIRST FLOOR

07543 304 065

www.sanctuary-homes.co.uk

coppiceview@connells.co.uk

Images are purely for illustrative purposes and are not representative of specification. Dimensions are approximate.

Sanctuary



The Bellflower

Coppice View
Malvern, WR14 1PW

3 Bedroom Home - Plots 31 & 32

Sanctuary

The Bellflower



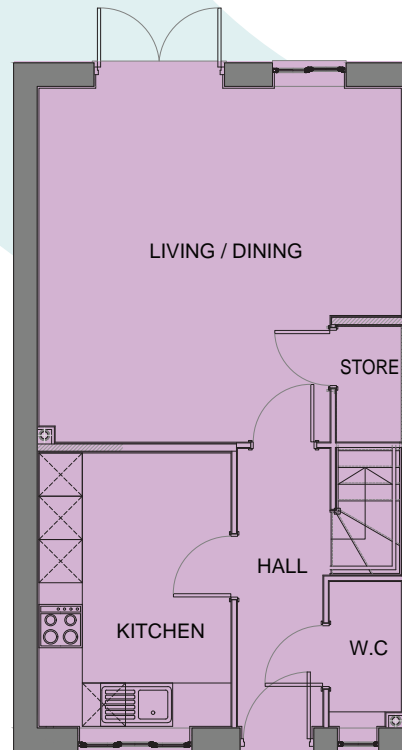
  #mysanctuaryhome

Plots 31 & 32

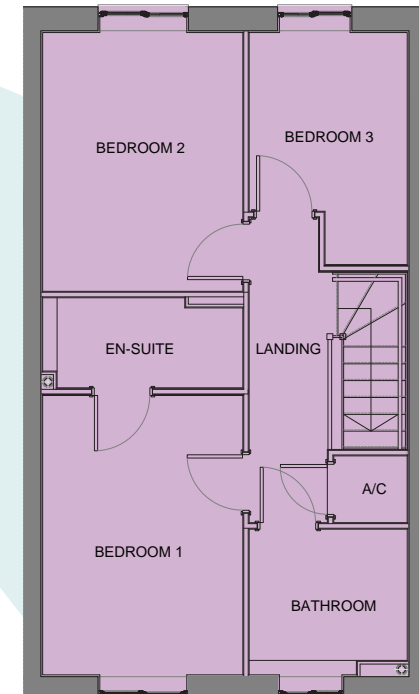
This three-bedroom home has a kitchen to the front of the property and benefits from a downstairs WC. Towards the rear of the property is a good-sized living room with patio doors opening out to the back garden.

Upstairs, there is a master bedroom with en-suite and a bathroom to the front of the property. To the back, there are a further two bedrooms. This property also includes off-road parking and a garage.

	Width (m) x Length (m)	Width (feet and inches) x Length (feet and inches)
Kitchen	2.6 x 3.8	8'9" x 12'6"
Living / Dining	5 x 4.9	16'6" x 16'2"
WC	1 x 2	3'3" x 6'7"
Bedroom 1	2.7 x 3.8	9'1" x 12'8"
Ensuite	2.7 x 1.2	9'1" x 4'1"
Bedroom 2	2.7 x 3.5	9'1" x 11'8"
Bedroom 3	2.1 x 3.2	7'2" x 10'6"
Bathroom	2.1 x 2	7'2" x 6'7"
Total Area: 89m2 / 957.99sqft		



↑ **GROUND FLOOR**



↑ **FIRST FLOOR**

07543 304 065

www.sanctuary-homes.co.uk

coppiceview@connells.co.uk

Images are purely for illustrative purposes and are not representative of specification. Dimensions are approximate.

Sanctuary



The Betony

Coppice View
Malvern, WR14 1PW

2 Bedroom Home - Plots 3 & 4

Sanctuary

The Betony



  #mysanctuaryhome

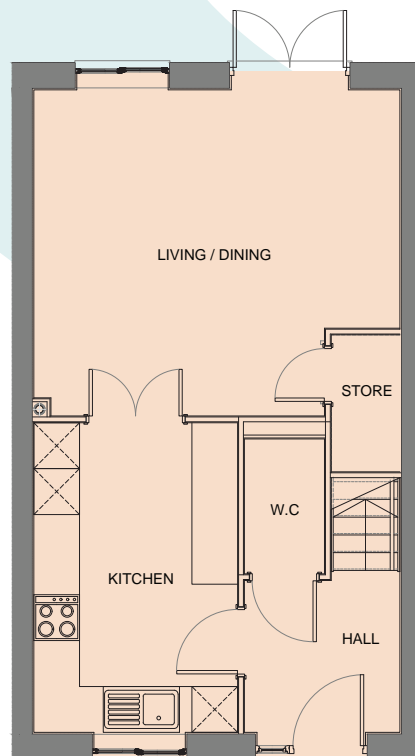
Plots 03 & 04

This beautiful two-bedroom home has a good-sized kitchen which leads through to a large living/dining room at the back of the property. Off the hallway, there's a downstairs WC.

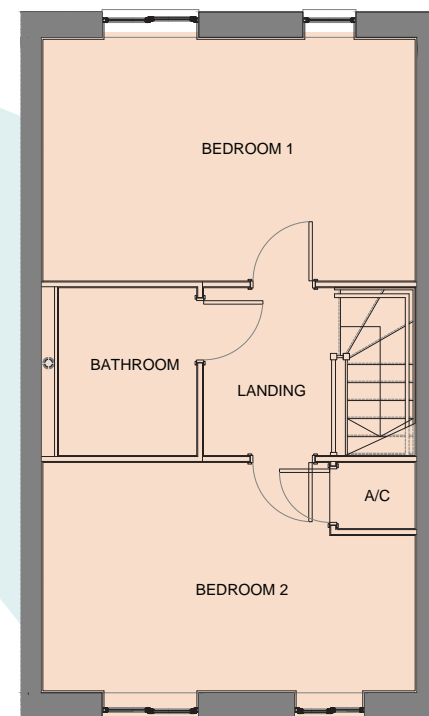
Upstairs, there's two bedrooms, one to the front of the property and one to the back, with a family bathroom. This property also includes off-road parking.

	Width (m) x Length (m)	Width (feet and inches) x Length (feet and inches)
Kitchen	2.6 x 4	8'9" x 13'3"
Living / Dining	4.8 x 4.2	15'9" x 14'0"
WC	1 x 1.7	3'5" x 5'9"
Bedroom 1	4.8 x 3.1	15'9" x 10'3"
Bedroom 2	4.8 x 2.9	15'9" x 9'8"
Bathroom	1.7 x 2.1	5'10" x 7'1"

Total Area: 81m² / 871.88sqft



↑
GROUND FLOOR



↑
FIRST FLOOR

07543 304 065

www.sanctuary-homes.co.uk

coppiceview@connells.co.uk

Images are purely for illustrative purposes and are not representative of specification. Dimensions are approximate.

Sanctuary



The Buttercup

Coppice View
Malvern, WR14 1PW

3 Bedroom Home - Plots 11, 12 & 19

Sanctuary

The Buttercup



#mysanctuaryhome

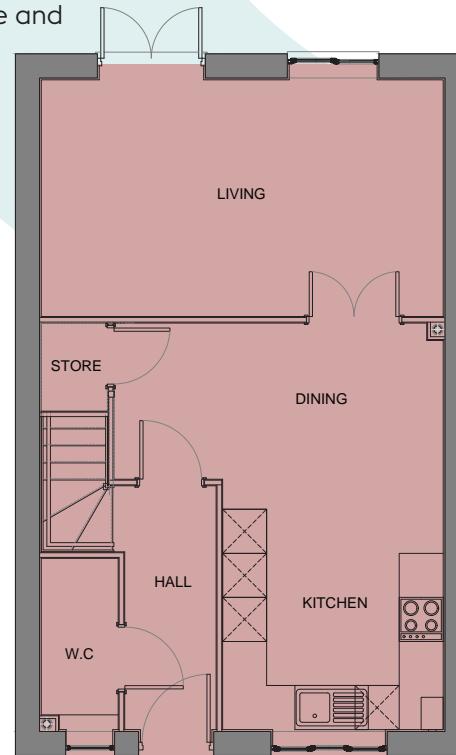
Plots 11, 12 & 19

On entering this lovely three-bedroom home, there's a large open-plan kitchen/dining room with double doors leading through to the living room, which then leads out to the garden. This property also benefits from a downstairs WC and storage cupboard.

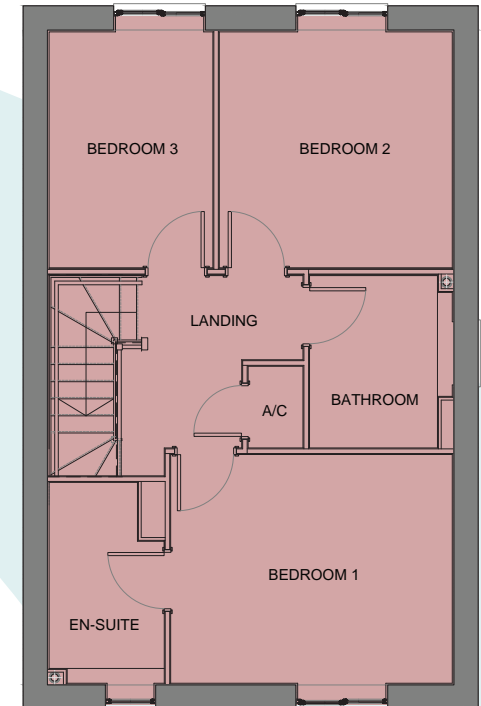
Upstairs, there's a large master bedroom with en-suite to the front of the property, a bathroom in the middle and two further bedrooms to the back of the property. This property also includes a garage and off-road parking.

	Width (m) x Length (m)	Width (feet and inches) x Length (feet and inches)
Kitchen / Dining	4.4 x 5.5	14'9" x 18'2"
Living Room	5.4 x 3.2	17'11" x 10'7"
WC	1 x 2.3	3'5" x 7'8"
Bedroom 1	3.8 x 3.1	12'6" x 10'2"
Ensuite	1.5 x 2.7	5'2" x 8'11"
Bedroom 2	3.1 x 3.2	10'4" x 10'6"
Bedroom 3	2.2 x 3.2	7'3" x 10'7"
Bathroom	1.9 x 2.3	6'4" x 7'8"

Total Area: 97m² / 1044.1sqft



GROUND FLOOR



FIRST FLOOR

07543 304 065

www.sanctuary-homes.co.uk

coppiceview@connells.co.uk

Images are purely for illustrative purposes and are not representative of specification. Dimensions are approximate.

Sanctuary



The Champion

Coppice View
Malvern, WR14 1PW

3 Bedroom Home - Plots 2 & 22

Sanctuary

The Champion



#mysanctuaryhome

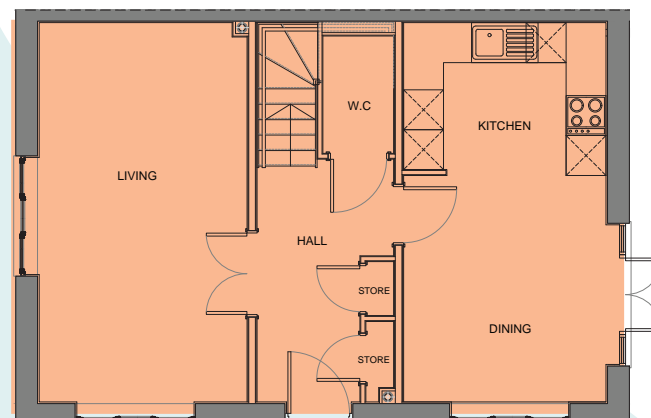
Plots 02 & 22

This three-bedroom, double fronted property has a large lounge to one side and an open plan kitchen / diner with double doors out to the garden on the other. In the hallway, there's a downstairs WC and two storage cupboards.

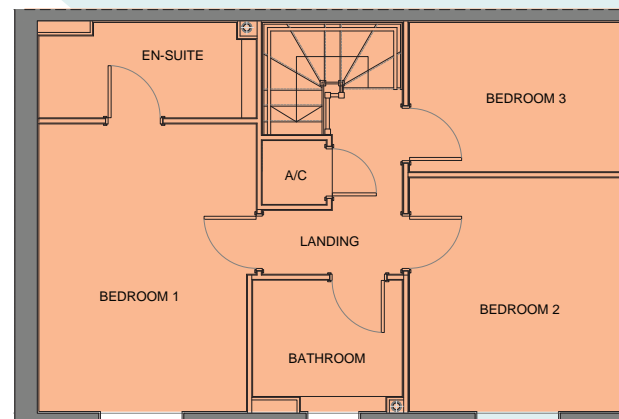
Upstairs, The Champion has a large master bedroom with en-suite, a bathroom to the centre of the property and two further bedrooms. This property also includes a garage and off-road parking.

	Width (m) x Length (m)	Width (feet and inches) x Length (feet and inches)
Kitchen / Dining	3 x 5.7	10' x 18'9"
Living Room	3.1 x 5.7	10'4" x 18'9"
WC	1 x 1.9	3'6" x 6'5"
Bedroom 1	3.1 x 4.2	10'5" x 13'10"
Ensuite	3.1 x 1.4	10'5" x 4'7"
Bedroom 2	3.1 x 3.2	10'2" x 11'3"
Bedroom 3	3.1 x 2.1	10'2" x 7'2"
Bathroom	2.1 x 1.9	7'2" x 6'4"

Total Area: 97m² / 1044.1sqft



GROUND FLOOR



FIRST FLOOR

07543 304 065

www.sanctuary-homes.co.uk

coppiceview@connells.co.uk

Images are purely for illustrative purposes and are not representative of specification. Dimensions are approximate.

Sanctuary

The Clover

Coppice View
Malvern, WR14 1PW

3 Bedroom Home - Plot 17



Sanctuary

The Clover

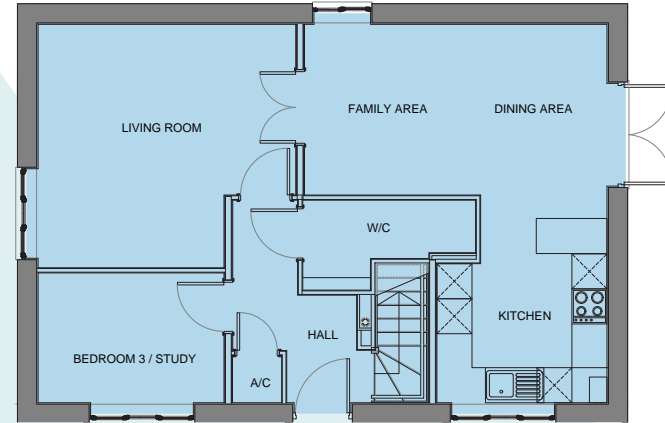


#mysanctuaryhome

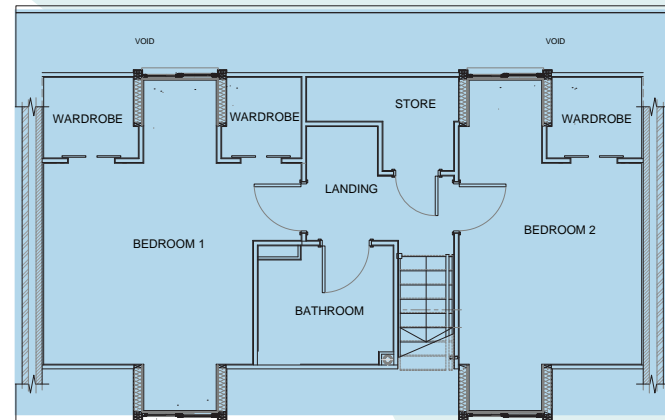
Plot 17

This double-fronted, three-bedroom home has a large hallway, a bedroom / study off to the left, a living area and then a generous kitchen / dining and family area to the right. The Clover also benefits from a large cloakroom and downstairs WC.

Upstairs, The Clover has two double bedrooms, both benefiting from built-in wardrobes and a family bathroom to the centre of the property. This property also includes a garage and off-road parking.



GROUND FLOOR



FIRST FLOOR

	Width (m) x Length (m)	Width (feet and inches) x Length (feet and inches)
Kitchen	2.9 x 3.5	9'7" x 11'8"
Dining/Family	5.1 x 2.9	17' x 9'7"
Living Room	4.4 x 4.1	14'6" x 13'8"
WC	2.9 x 1.5	9'7" x 5'1"
Bedroom 1	4.1 x 3.2	13'9" x 10'9"
Wardrobes	1.5 x 1.3	5'1" x 4'4"
Bedroom 2	2.9 x 3.2	9'9" x 10'9"
Bathroom	2.2 x 1.9	7'3" x 6'4"
Bedroom 3 / Study	3.1 x 2.2	10'5" x 7'4"

Total Area: 111m² / 1194.79sqft

07543 304 065

www.sanctuary-homes.co.uk

coppiceview@connells.co.uk

Images are purely for illustrative purposes and are not representative of specification. Dimensions are approximate.

Sanctuary



The Foxglove

Coppice View
Malvern, WR14 1PW

4 Bedroom Home - Plots 5, 6, 7 & 21

Sanctuary

The Foxglove



#mysanctuaryhome

Plots 05, 06, 07 & 21

This stunning four-bedroom home has a kitchen and dining area to the left of the property, with double doors out to the garden at the back. To the right, there is a large living room that runs the full length of the property and again opens out to the back garden. The Foxglove also benefits from a downstairs WC and utility room.

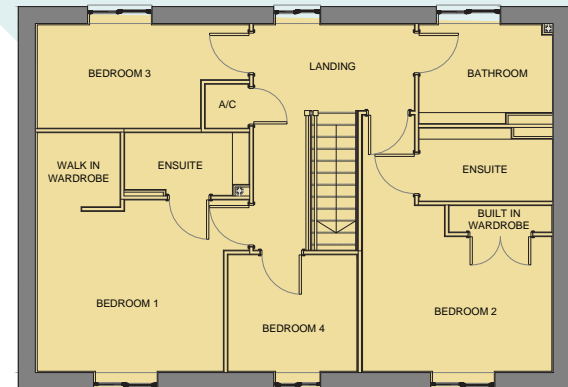
Upstairs, there's two master bedrooms, both benefiting from an en-suite and built-in storage, a further third and fourth bedrooms and a family bathroom. This property also includes a garage and off-road parking.

	Width (m) x Length (m)	Width (feet and inches) x Length (feet and inches)
Kitchen / Dining	3.6 x 6.7	12'11" x 22'
Living Room	3.6 x 6.7	11'11" x 22'
Utility	2.3 x 1.6	7'8" x 5'3"
WC	1.3 x 2	4'6" x 6'7"
Bedroom 1	3.6 x 3.2	11'10" x 10'11"
Wardrobe	1.6 x 1.4	5'3" x 4'8"
Ensuite	2.4 x 1.2	7'11" x 4'
Bedroom 2	3.6 x 4.9	12' x 16'3"
Ensuite	2.5 x 1.4	8'6" x 4'8"
Bedroom 3	4.1 x 2	13'6" x 6'7"
Bedroom 4	2.5 x 2.2	8'3" x 7'5"
Bathroom	2.5 x 1.9	8'6" x 6'3"

Total Area: 134m² / 1442.36sqft



FIRST FLOOR



07543 304 065

www.sanctuary-homes.co.uk

coppiceview@connells.co.uk

Images are purely for illustrative purposes and are not representative of specification. Dimensions are approximate.

Sanctuary



The Mallow

Coppice View
Malvern, WR14 1PW

3 Bedroom Home - Plot 14

Sanctuary

The Mallow



#mysanctuaryhome

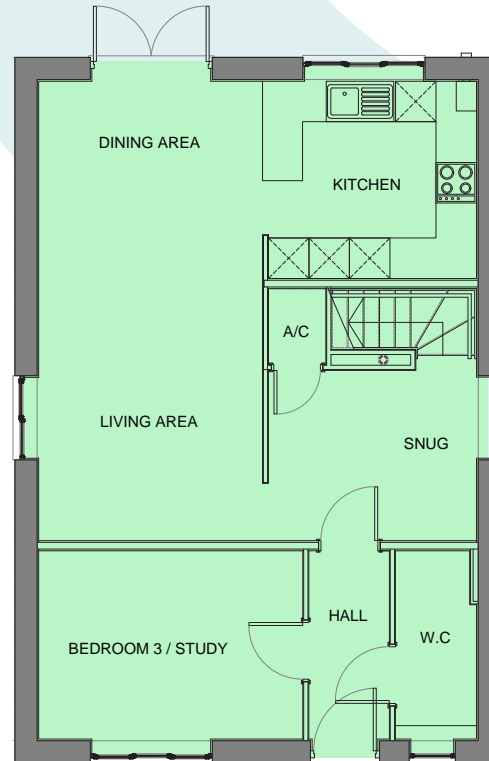
Plot 14

This three bedroom home has a modern open-plan layout, including a snug, living area, dining area and a kitchen with double doors out to the back garden. The Mallow also benefits from a downstairs WC and a study / third bedroom to the front of the property.

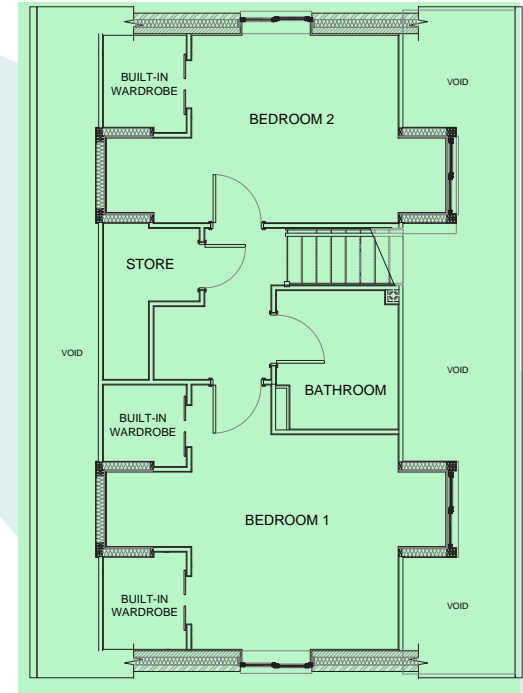
Upstairs, there are two bedrooms with built-in storage and a family bathroom. This property also includes a garage and off-road parking.

	Width (m) x Length (m)	Width (feet and inches) x Length (feet and inches)
Kitchen	2.9 x 3	9'7" x 10'1"
Living / Dining	6.8 x 3.3	22'4" x 10'10"
Snug	2.5 x 3	8'3" x 10'1"
WC	2.7 x 1.2	9'2" x 3'11"
Bedroom 1	4.1 x 3.2	13'9" x 10'9"
Wardrobes	1.3 x 1.5	5'1" x 4'4"
Bedroom 2	2.9 x 3.2	9'9" x 10'9"
Bathroom	2.2 x 1.9	7'3" x 6'4"
Bedroom 3 / Study	2.7 x 3.9	9'2" x 12'10"

Total Area: 111m² / 1194.79sqft



↑ GROUND FLOOR



↑ FIRST FLOOR

07543 304 065

www.sanctuary-homes.co.uk

coppiceview@connells.co.uk

Images are purely for illustrative purposes and are not representative of specification. Dimensions are approximate.

Sanctuary

The Poppy

Coppice View
Malvern, WR14 1PW

5 Bedroom Home - Plot 33

Sanctuary

The Poppy



#mysanctuaryhome

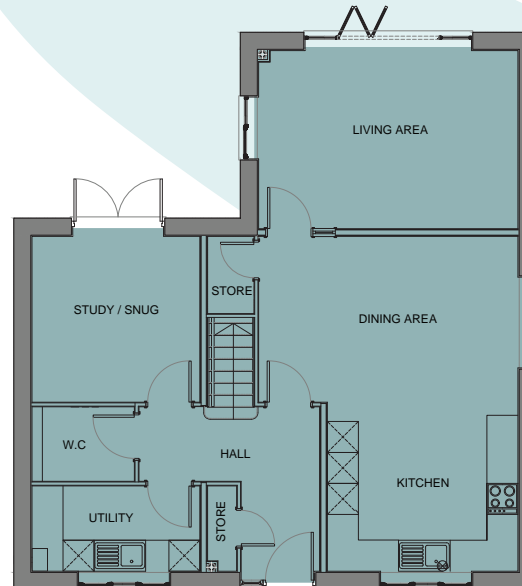
Plot 33

This five bedroom home has a large kitchen / dining area and living area, a separate snug / study, downstairs WC and utility area. There is also a stunning bi-fold door off the living area, leading to the back garden.

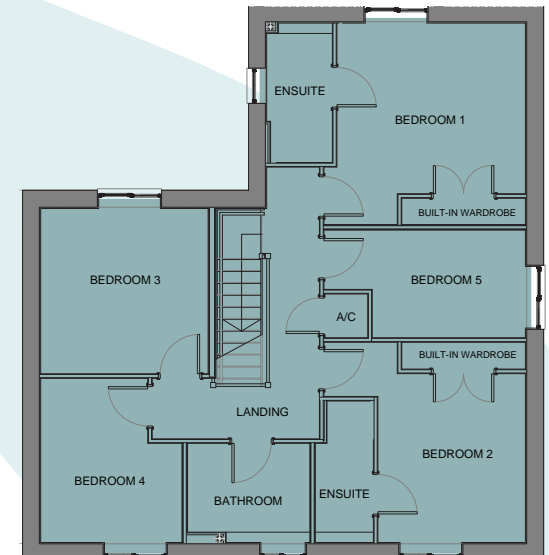
Upstairs, two of the bedrooms have an en-suite, then there's three further good-sized bedrooms and a family bathroom. This property also includes a garage and off-road parking.

	Width (m) x Length (m)	Width (feet and inches) x Length (feet and inches)
Kitchen / Dining	5 x 6.4	16'6" x 21'3"
Living Room	5 x 3.4	16'6" x 13'2"
Study / Snug	3.2 x 3.2	10'8" x 10'6"
Utility	3.1 x 1.6	10'8" x 5'5"
WC	1.9 x 1.4	6'6" x 4'9"
Bedroom 1	3.6 x 3.9	12' x 12'10"
Ensuite	1.2 x 2.7	4'2" x 8'11"
Bedroom 2	2.8 x 3.8	9'5" x 12'9"
Ensuite	1.1 x 2.7	3'8" x 9'
Bedroom 3	3.2 x 3.2	10'8" x 10'6"
Bedroom 4	2.7 x 3.1	9' x 10'5"
Bedroom 5	3.9 x 2	12'10" x 6'10"
Bathroom	2.3 x 1.9	7'10" x 6'4"

Total Area: 158m² / 1700.7sqft



↑ GROUND FLOOR



↑ FIRST FLOOR

07543 304 065

www.sanctuary-homes.co.uk

coppiceview@connells.co.uk

Images are purely for illustrative purposes and are not representative of specification. Dimensions are approximate.

Sanctuary



The Primrose

Coppice View
Malvern, WR14 1PW

3 Bedroom Home - Plots 15 & 16



Sanctuary

The Primrose



f @ #mysanctuaryhome

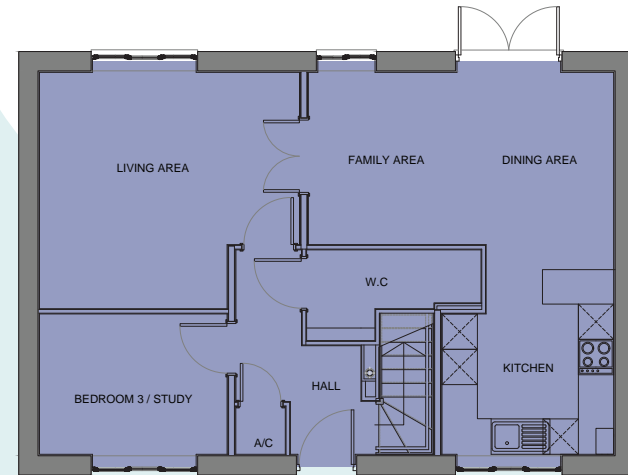
Plots 15 & 16

This double-fronted, three-bedroom home has a large hallway, a bedroom / study off to the left, a living area and generous kitchen / dining and family area to the right. The Primrose also benefits from a large cloakroom and downstairs WC.

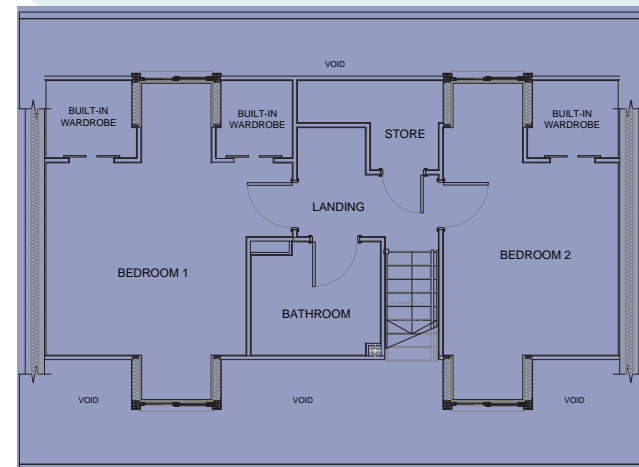
Upstairs, The Primrose has two double bedrooms, both benefiting from built-in wardrobes, and a family bathroom to the centre of the property. This property also benefits from a garage and off-road parking.

	Width (m) x Length (m)	Width (feet and inches) x Length (feet and inches)
Kitchen	2.9 x 3.5	9'7" x 11'8"
Dining / Family	5.1 x 2.9	17' x 9'7"
Living Room	4.4 x 4	14'6" x 13'2"
WC	2.9 x 1.5	9'7" x 5'1"
Bedroom 1	4.1 x 3.2	13'9" x 10'9"
Wardrobes	1.5 x 1.3	5'1" x 4'4"
Bedroom 2	2.9 x 3.2	9'9" x 10'9"
Bathroom	2.2 x 1.9	7'3" x 6'4"
Bedroom 3 / Study	3.1 x 2.3	10'5" x 7'10"

Total Area: 111m² / 1194.79sqft



GROUND FLOOR



FIRST FLOOR

Sanctuary

X07543 304 065

www.sanctuary-homes.co.uk

coppiceview@connells.co.uk

Images are purely for illustrative purposes and are not representative of specification. Dimensions are approximate.



The Tansy

Coppice View
Malvern, WR14 1PW

4 Bedroom Home - Plot 20

Sanctuary

The Tansy



#mysanctuaryhome

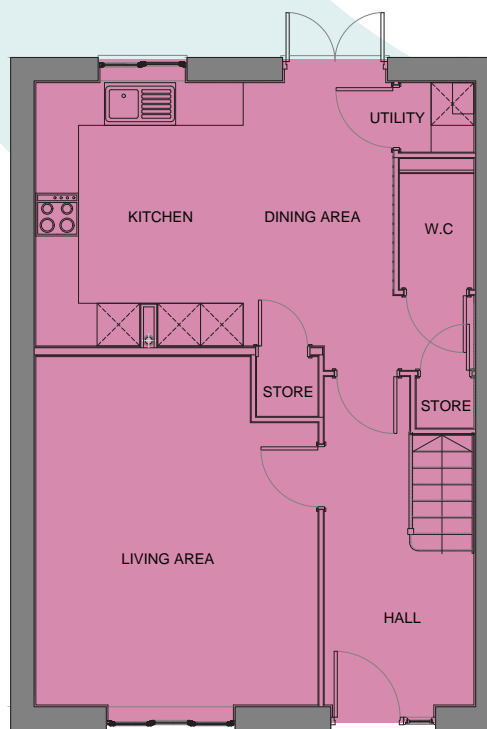
Plot 20

This four-bedroom home has a large living area to the front of the property and an open plan kitchen / diner to the back, with double doors opening out into the garden. The Tansy also benefits from a downstairs WC and a utility area.

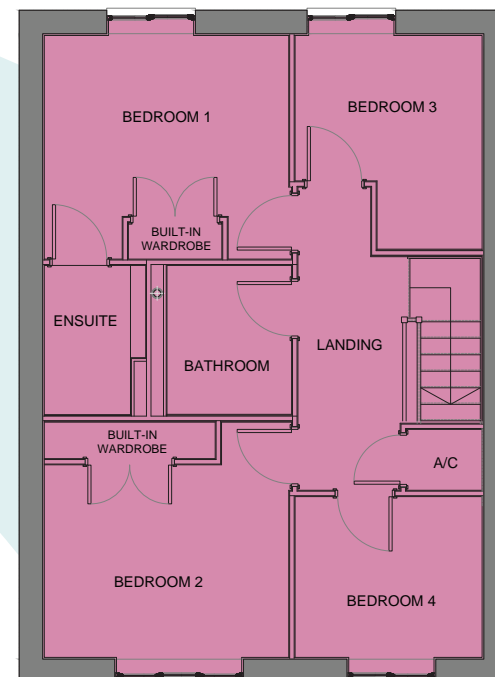
Upstairs, there's a master bedroom with ensuite, three further bedrooms and a family bathroom. This property also benefits from off-road parking.

	Width (m) x Length (m)	Width (feet and inches) x Length (feet and inches)
Kitchen / Dining	5 x 3.7	16'5" x 12'2"
Living Room	3.9 x 4.9	13' x 16'11"
WC	1 x 1.6	3'5" x 5'4"
Bedroom 1	3.4 x 3.1	11'3" x 10'4"
Ensuite	1.4 x 2.1	4'8" x 6'11"
Bedroom 2	3.4 x 3.2	11'3" x 10'9"
Bedroom 3	2.6 x 3	8'7" x 9'10"
Bedroom 4	2.6 x 2.2	8'7" x 7'4"
Bathroom	1.7 x 2.1	5'9" x 6'11"

Total Area: 107m² / 1151.7sqft



↑ GROUND FLOOR



↑ FIRST FLOOR

07543 304 065

www.sanctuary-homes.co.uk

coppiceview@connells.co.uk

Images are purely for illustrative purposes and are not representative of specification. Dimensions are approximate.

Sanctuary



The Yarrow

Coppice View
Malvern, WR14 1PW

5 Bedroom Home - Plot 13



Sanctuary

The Yarrow



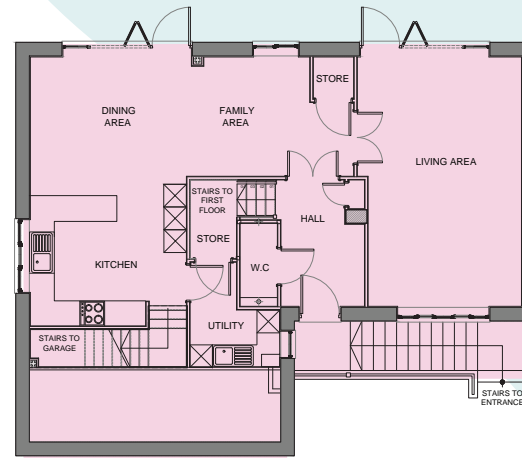
#mysanctuaryhome

Plot 13

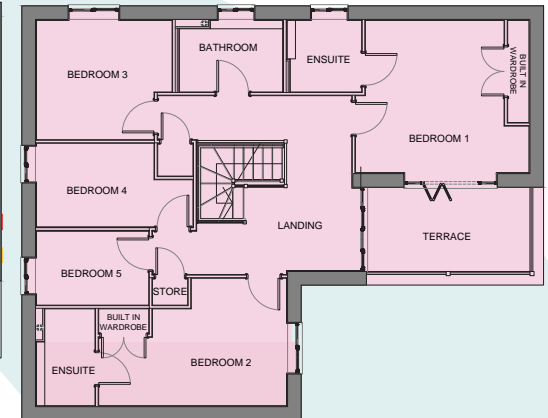
This stunning five-bedroom home has a great open-plan design and two bi-fold doors that lead out to the back garden. On entering the property there's a large front to back living room to the right and to the left is a kitchen / dining and family area. The Yarrow also benefits from a downstairs WC and utility room.

Upstairs, there's a beautiful master bedroom with ensuite and bi-fold doors out to a terrace. There's a further four bedrooms, one with an ensuite, and a family bathroom. This property also includes a garage and off-road parking.

	Width (m) x Length (m)	Width (feet and inches) x Length (feet and inches)
Kitchen / Dining	3.7 x 6.5	12'5" x 21'4"
Utility	2.1 x 2.5	7'1" x 8'4"
Living Room	3.9 x 6	13' x 19'10"
Family Area	4 x 2.8	13'3" x 9'6"
WC	2 x 0.9	2'11" x 7'6"
Bedroom 1	4.1 x 3.6	13'9" x 12'1"
Ensuite	1.8 x 1.7	5'11" x 5'8"
Terrace	3.8 x 2	12'9" x 6'7"
Bedroom 2	4.5 x 3	14'11" x 10'1"
Ensuite	1.4 x 2.3	4'8" x 7'8"
Bedroom 3	3.2 x 2.8	10'9" x 9'5"
Bedroom 4	3.7 x 2	12'5" x 6'8"
Bedroom 5	2.7 x 1.7	8'11" x 5'10"
Bathroom	2.5 x 1.7	8'2" x 5'8"
Total Area: 162m² / 1743.75sqft		



GROUND FLOOR



FIRST FLOOR

07543 304 065

www.sanctuary-homes.co.uk

coppiceview@connells.co.uk

Images are purely for illustrative purposes and are not representative of specification. Dimensions are approximate.

Sanctuary