



Connells

Norton Place
Ramsden Heath Billericay

Norton Place Ramsden Heath Billericay CM11 1JJ

for sale offers in excess of
£450,000



Property Description

Three Bedroom Semi Detached House in a sought after village location, consisting of a Kitchen/Diner, Downstairs Cloakroom, Lounge with french doors out to the garden. Three bedrooms with ensuite to master, Family Bathroom, Garage with Driveway and a South facing rear garden.

The garage has been converted to be a man cave/study with an ensuite (this could be returned to be a usable garage if required).

This well presented property in the sought after village of Ramsden Heath is coming to the market with no onward chain, it sits within the catchment of Downham School and is a short walk to local Pubs and the park.



Lounge

15' 10" x 10' (4.83m x 3.05m)

Kitchen/Diner

19' x 14' (5.79m x 4.27m)

Bedroom 1

14' x 13' (4.27m x 3.96m)

Bedroom 2

9' x 8' (2.74m x 2.44m)

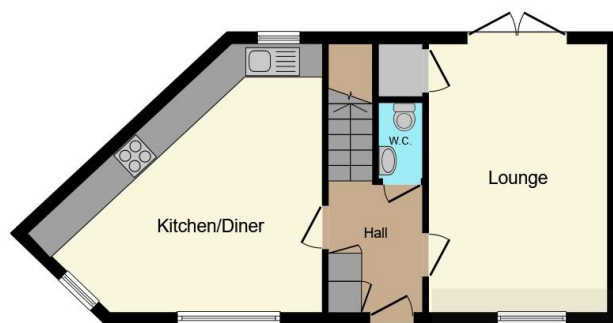
Bedroom 3

11' x 6' (3.35m x 1.83m)





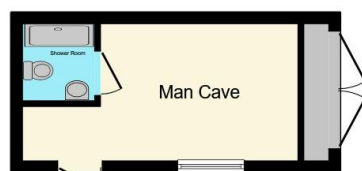




Ground Floor



First Floor



Outbuilding

Connells

This floor plan is for illustrative purposes only. It is not drawn to scale. Any measurements, floor areas (including any total floor area), openings and orientation are approximate. No details are guaranteed, they cannot be relied upon for any purpose and they do not form part of any agreement. No liability is taken for any error, omission or misstatement. A party must rely upon its own inspection(s). Powered by www.focalagent.com

To view this property please contact Connells on

T 01277 655 555
E billericay@connells.co.uk

96 High Street
 BILLERICAY CM12 9BT

EPC Rating: C

Tenure: Freehold

view this property online connells.co.uk/Property/BCY307705



1. MONEY LAUNDERING REGULATIONS Intending purchasers will be asked to produce identification documentation at a later stage and we would ask for your co-operation in order that there will be no delay in agreeing the sale. 2. These particulars do not constitute part or all of an offer or contract. 3. The measurements indicated are supplied for guidance only and as such must be considered incorrect. Potential buyers are advised to recheck measurements before committing to any expense. 4. We have not tested any apparatus, equipment, fixtures, fittings or services and it is in the buyers interest to check the working condition of any appliances.

Connells Residential is registered in England and Wales under company number 1489613, Registered Office is Cumbria House, 16-20 Hockliffe Street, Leighton Buzzard, Bedfordshire, LU7 1GN. VAT Registration Number is 500 2481 05.

See all our properties at www.connells.co.uk | www.rightmove.co.uk | www.zoopla.co.uk

Property Ref: BCY307705 - 0006