



Connells

Ramsay Drive
Basildon



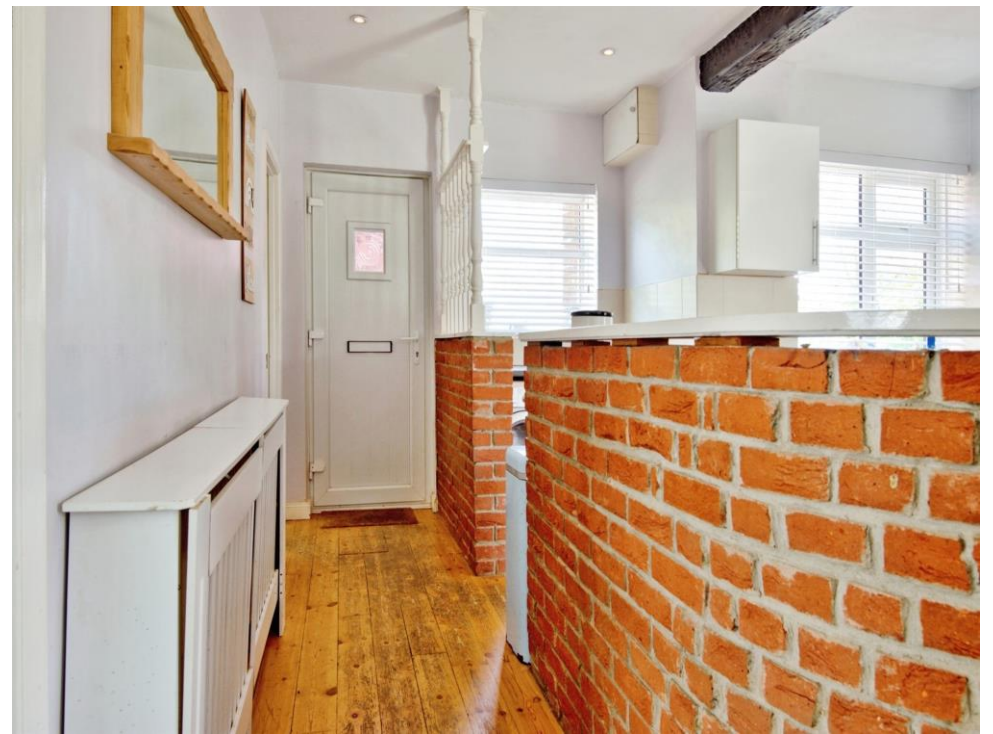
Property Description

Offered with no onward chain comes this fully detached three bedroom bungalow with a most impressive converted loft. The garden sits on a good sized plot with private driveway to the front and a spacious garden to the rear.

Originally built circa 1930's, this bungalow has been extended several times. Internally, the living space is a semi open-planned, creating a large living space and plenty of light flowing through the property. The kitchen/diner sits to the front whilst the lounge is to the rear, also on the ground floor are two large bedrooms and very generously sized family bathroom comprising of a shower cubicle, panelled bath, WC and wash basin. A staircase leads to the first floor which leads to an additional room and plenty of floor space and eaves storage.

Ramsay Drive is a residential road and overlooks fields. It is close to Pitsea Station and provides great road links in the form of the A13.









This floor plan is for illustrative purposes only. It is not drawn to scale. Any measurements, floor areas (including any total floor area), openings and orientation are approximate. No details are guaranteed, they cannot be relied upon for any purpose and they do not form part of any agreement. No liability is taken for any error, omission or misstatement. A party must rely upon its own inspection(s). Powered by www.focalagent.com

To view this property please contact Connells on

T 01277 655 555
E billericay@connells.co.uk

96 High Street
 BILLERICAY CM12 9BT

EPC Rating: E

Tenure: Freehold

view this property online connells.co.uk/Property/BCY307557



1. MONEY LAUNDERING REGULATIONS Intending purchasers will be asked to produce identification documentation at a later stage and we would ask for your co-operation in order that there will be no delay in agreeing the sale. 2. These particulars do not constitute part or all of an offer or contract. 3. The measurements indicated are supplied for guidance only and as such must be considered incorrect. Potential buyers are advised to recheck measurements before committing to any expense. 4. We have not tested any apparatus, equipment, fixtures, fittings or services and it is in the buyers interest to check the working condition of any appliances.

Connells Residential is registered in England and Wales under company number 1489613, Registered Office is Cumbria House, 16-20 Hockliffe Street, Leighton Buzzard, Bedfordshire, LU7 1GN. VAT Registration Number is 500 2481 05.

See all our properties at www.connells.co.uk | www.rightmove.co.uk | www.zoopla.co.uk

Property Ref: BCY307557 - 0003