



Connells

Norsey View Drive
Billericay



Property Description

Guide Price; £550,000 - £575,000

Offered with no onward chain comes this four bedroom semi detached family home that benefits from an integral garage and a superbly spacious plot.

The plot commences with a large frontage, allowing off street parking and vehicular access into the garage if desired. There is also gated side access to the rear garden. Internally, a good sized entrance hallway welcomes you and leads into the open planned lounge/diner which in turn provides access to the kitchen. Also on the ground floor is a WC and access into the integral garage. To the first floor are four well proportioned bedrooms and a family bathroom. As the property sits on a bend in the road, the garden widens towards the end which creates a superb plot for those looking for a big garden.

The property is located in Norsey View Drive, a very sought after road in Billericay and extremely close to Buttsbury Infant and Junior Schools, as well as Mayflower Secondary School. It is also walking distance to the High Street and Billericay Station where trains run to London Liverpool Street in approximately thirty five minutes.



Hallway

Lounge

21' 2" x 11' 8" (6.45m x 3.56m)

Dining Area

7' x 6' 9" (2.13m x 2.06m)

Kitchen

10' 10" x 7' 1" (3.30m x 2.16m)

Integral Garage

WC

Bedroom One

11' 4" x 10' 9" (3.45m x 3.28m)

Bedroom Two

15' x 8' 7" (4.57m x 2.62m)

Bedroom Four

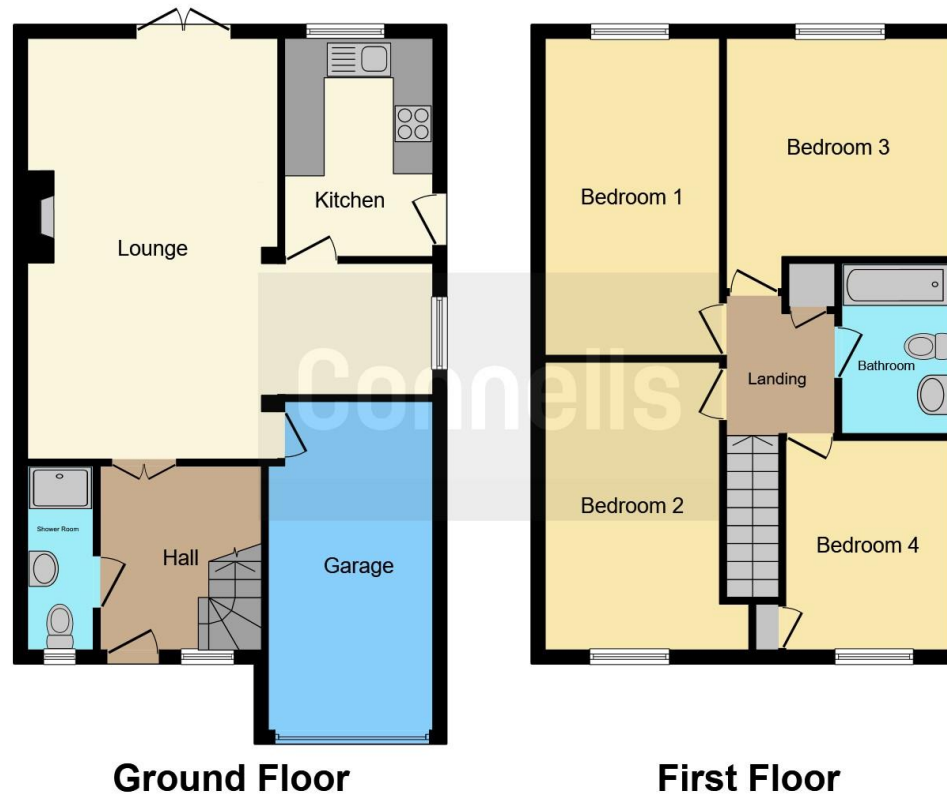
9' x 8' 3" (2.74m x 2.51m)

Bathroom









This floor plan is for illustrative purposes only. It is not drawn to scale. Any measurements, floor areas (including any total floor area), openings and orientation are approximate. No details are guaranteed, they cannot be relied upon for any purpose and they do not form part of any agreement. No liability is taken for any error, omission or misstatement. A party must rely upon its own inspection(s). Powered by www.focalagent.com

To view this property please contact Connells on

T 01277 655 555
E billericay@connells.co.uk

96 High Street
 BILLERICAY CM12 9BT

EPC Rating: D

view this property online connells.co.uk/Property/BCY307489

Tenure: Freehold



1. MONEY LAUNDERING REGULATIONS Intending purchasers will be asked to produce identification documentation at a later stage and we would ask for your co-operation in order that there will be no delay in agreeing the sale. 2. These particulars do not constitute part or all of an offer or contract. 3. The measurements indicated are supplied for guidance only and as such must be considered incorrect. Potential buyers are advised to recheck measurements before committing to any expense. 4. We have not tested any apparatus, equipment, fixtures, fittings or services and it is in the buyers interest to check the working condition of any appliances.

Connells Residential is registered in England and Wales under company number 1489613, Registered Office is Cumbria House, 16-20 Hockliffe Street, Leighton Buzzard, Bedfordshire, LU7 1GN. VAT Registration Number is 500 2481 05.

See all our properties at www.connells.co.uk | www.rightmove.co.uk | www.zoopla.co.uk

Property Ref: BCY307489 - 0002