



**Connells**

Broomhall Road  
Chelmsford



### Property Description

Situated on the peaceful Broomhall Road in Broomfield, Chelmsford, this charming three-bedroom detached bungalow, features three generously sized double bedrooms, with the master bedroom boasting an en-suite for added comfort and luxury. Modern kitchen diner complete with work surfaces and a range cooker, seamlessly blending style with practicality. The large L-shaped living area offers picturesque views of the rear garden, perfect for relaxing and entertaining. A contemporary family shower room with fitted units adds to the home's modern appeal.

Outside, the property offers a spacious 150ft Aprox. rear garden, ideal for outdoor activities and unwinding. The presence of an office space or games room provides flexibility.

Convenience is at the forefront of this property's appeal, being within walking distance of Broomfield Hospital and local schools, making it a prime location for healthcare professionals and families. Moreover, the off-street parking for up to four/five cars ensures ample parking space for residents and guests.

Looking ahead, the property presents an exciting opportunity for loft extension, enabling further customization and expansion of living areas. (Planning Previously Approved) This feature opens up a world of possibilities for tailoring the home to suit your unique needs and preferences.



# Chelmsford

Nestled in the heart of Essex, Chelmsford exudes a unique blend of historic charm and modern vibrancy. As the county town, Chelmsford offers a rich tapestry of culture, leisure, and convenience.

Explore the quaint streets lined with boutique shops, cafes, and restaurants, perfect for leisurely strolls and culinary delights. Immerse yourself in the town's history at iconic landmarks like Chelmsford Cathedral and Hylands House.

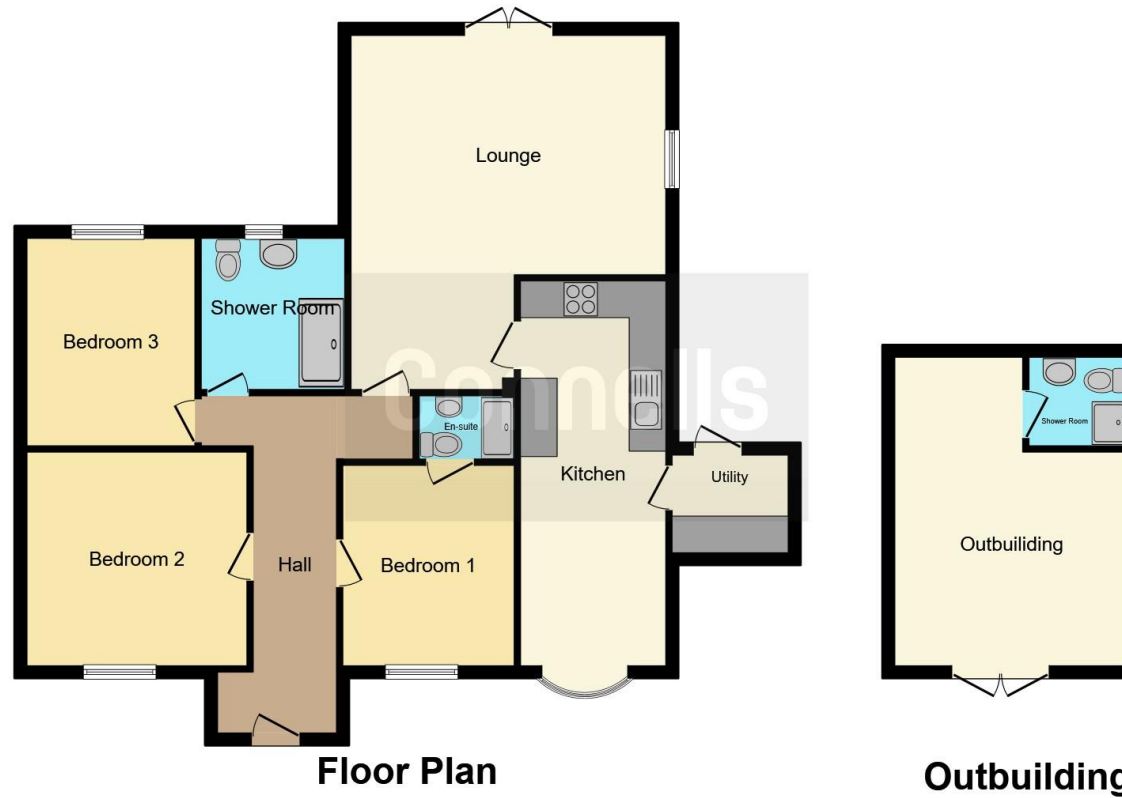
Nature enthusiasts will revel in the picturesque parks and green spaces scattered throughout the town, providing tranquil retreats for relaxation and outdoor activities. With excellent transport links, including a direct rail connection to London, Chelmsford seamlessly combines urban amenities with a peaceful, suburban lifestyle.

Experience the best of both worlds in Chelmsford, where vibrant city life harmonizes with the serene surroundings of Essex's countryside.









This floor plan is for illustrative purposes only. It is not drawn to scale. Any measurements, floor areas (including any total floor area), openings and orientation are approximate. No details are guaranteed, they cannot be relied upon for any purpose and they do not form part of any agreement. No liability is taken for any error, omission or misstatement. A party must rely upon its own inspection(s). Powered by [www.focalagent.com](http://www.focalagent.com)

To view this property please contact Connells on

**T 01245 261 266**  
**E [chelmsford@connells.co.uk](mailto:chelmsford@connells.co.uk)**

4 Tindal Square  
 CHELMSFORD CM1 1EH

**EPC Rating: D**

**view this property online [connells.co.uk/Property/CHL307946](http://connells.co.uk/Property/CHL307946)**

Tenure: Freehold



1. MONEY LAUNDERING REGULATIONS Intending purchasers will be asked to produce identification documentation at a later stage and we would ask for your co-operation in order that there will be no delay in agreeing the sale. 2. These particulars do not constitute part or all of an offer or contract. 3. The measurements indicated are supplied for guidance only and as such must be considered incorrect. Potential buyers are advised to recheck measurements before committing to any expense. 4. We have not tested any apparatus, equipment, fixtures, fittings or services and it is in the buyers interest to check the working condition of any appliances.

Connells Residential is registered in England and Wales under company number 1489613, Registered Office is Cumbria House, 16-20 Hockliffe Street, Leighton Buzzard, Bedfordshire, LU7 1GN. VAT Registration Number is 500 2481 05.

**See all our properties at [www.connells.co.uk](http://www.connells.co.uk) | [www.rightmove.co.uk](http://www.rightmove.co.uk) | [www.zoopla.co.uk](http://www.zoopla.co.uk)**

Property Ref: CHL307946 - 0008