

for sale

£599,950



The Steps Phocle Green Ross-On-Wye HR9 7TW

This 19th Century Cottage, now a licensed HMO offers a smart investment opportunity or an exciting opportunity for home-movers. For a rural escape or an addition to a portfolio, this home in Phocle Green is a must-view. Boasting a generous plot and a large floor plan, this home is available today.

The Steps Phocle Green Ross-On-Wye HR9 7TW

Entrance Porch

Bay door entrance, window to the side, two spotlights.

Cloakroom/Bathroom

W.C, wash basin, heated towel rail, one spotlight.

Shower Room/Wet Room

Electric shower, one centre spotlight.

Lounge

Window to the front of the property, log burner, four spotlights.

Kitchen/Diner

Bi-fold doors to the side of the property, two integrated double ovens, microwave, integrated hob, integrated fridge freezer & dishwasher, two central heated radiators, eight spotlights.

Utility Room

Window to the side of the property, door to access the side of the property, wall & base units, wash basin, plumbing for washing machine, central heating radiator.

Downstairs Bedroom

Windows to the front and side of the property, central heated radiator, six spotlights.

first floor Landing

Three spotlights.



Bedroom One

Window to the front, central heated radiator, six spotlights.

En Suite

Heated towel rail, W.C, wash basin, wet room with electric shower.

Bedroom Two

Window to the front, central heated radiator, four spotlights.

Bedroom Three

Bay doors & two windows to the rear of the property, central heated radiator, six spotlights.

Bathroom

Frosted window to the rear, electric shower, panelled bath, wash basin, W.C, heated towel rail, four spotlights.

Second Floor Landing

Window to the rear, three spotlights.

Bedroom Four

Sloped ceilings, window to the rear& front, two central heated radiators, six spotlights.

Walk In Wardrobe

one spotlight.

En Suite

Sloped ceilings, window to the rear, wet room electric shower, base storage units, wash basin, W.C, heated towel rail, two spotlights.

Front Garden

Green to the front from the drive, four wall light points, gated access to the side.

Rear Garden

Wooden steps leading up two garden levels, wood& metal gates, hedge& fence surround, five wall light points.

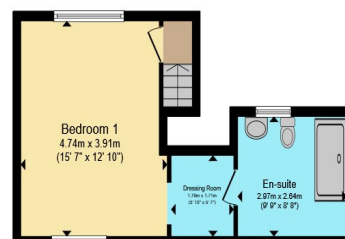
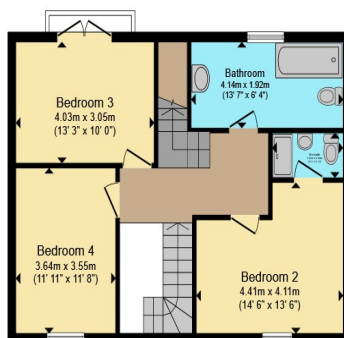
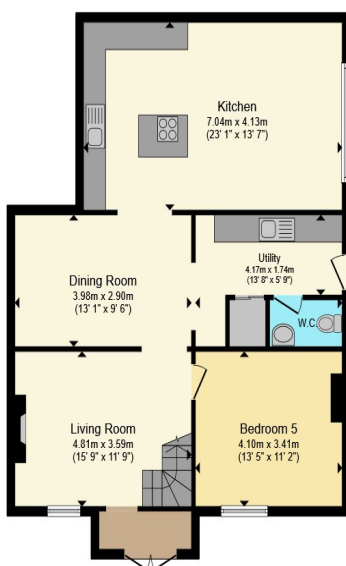
Parking

two - three car drive

Garage

Up and over door, two windows to side, doors to side and rear, power and lighting.





Total floor area 177.6 m² (1,912 sq.ft.) approx

This floor plan is for illustrative purposes only. It is not drawn to scale. Any measurements, floor areas (including any total floor area), openings and orientation are approximate. No details are guaranteed, they cannot be relied upon for any purpose and they do not form part of any agreement. No liability is taken for any error, omission or misstatement. A party must rely upon its own inspection(s). Powered by www.propertybox.io

Connells

To view this property please contact Connells on

T 01432 267 511
E hereford@connells.co.uk

23 King Street
 HEREFORD HR4 9BX

Property Ref: HER316194 - 0005

Tenure:Freehold EPC Rating: C

Council Tax Band: C

view this property online connells.co.uk/Property/HER316194



1. MONEY LAUNDERING REGULATIONS Intending purchasers will be asked to produce identification documentation at a later stage and we would ask for your co-operation in order that there will be no delay in agreeing the sale. 2. These particulars do not constitute part or all of an offer or contract. 3. The measurements indicated are supplied for guidance only and as such must be considered incorrect. Potential buyers are advised to recheck measurements before committing to any expense. 4. We have not tested any apparatus, equipment, fixtures, fittings or services and it is in the buyers interest to check the working condition of any appliances.

Connells Residential is registered in England and Wales under company number 1489613, Registered Office is Cumbria House, 16-20 Hockliffe Street, Leighton Buzzard, Bedfordshire, LU7 1GN. VAT Registration Number is 500 2481 05.

see all our properties at www.connells.co.uk | www.rightmove.co.uk | www.zoopla.co.uk