

for sale

£210,000



Goodrich Grove HEREFORD HR2 7DB

A beautiful two bedroom Semi-Detached home which is situated in a popular and quiet no through road location. This wonderful home offers large rooms throughout and is finished to a high standard making this the perfect property for first time buyers who are looking to get onto the property ladder, or even a brilliant investment opportunity. Briefly comprising: off road parking, two spaces, entrance hall, lounge, kitchen, downstairs W.C, first floor landing, two bedrooms, family bathroom and a beautiful garden to the rear.

Goodrich Grove HEREFORD HR2 7DB

Approach

Double glazed door to front, central heating radiator, ceiling light point, stairs leading to the first floor landing and doors to the following.

Entrance Hall

Double glazed door to front, central heating radiator, ceiling light point, stairs leading to the first floor landing and doors to the following.

Cloakroom

A low-level W.C, wash hand basin, part tiling to walls extractor fan and ceiling light point.

Lounge

13' 1" x 11' 8" (3.99m x 3.56m)

Double glazed French doors to rear giving access to the rear garden, central heating radiator and ceiling light point.

Kitchen

14' 4" max x 9' 10" max (4.37m max x 3.00m max)

A fitted kitchen with soft close wall and base units and roll top work surfaces one and a half bowl sink and drainer, integrated oven and induction hob with cooker hood over plumbing for washing machine and dish washer, integrated fridge freezer, central heating radiator, double glazed window to front elevation and door leading to the lounge

First Floor Landing

Loft access, central heating radiator, ceiling light point and doors to the following.



Bedroom One

13' max x 10' 1" max (3.96m max x 3.07m max)

Double glazed window to front elevation, central heating radiator, built in storage housing the central heating boiler and ceiling light point.

Bedroom Two

11' x 8' 8" (3.35m x 2.64m)

Double glazed window to rear elevation, central heating radiator and ceiling light point.

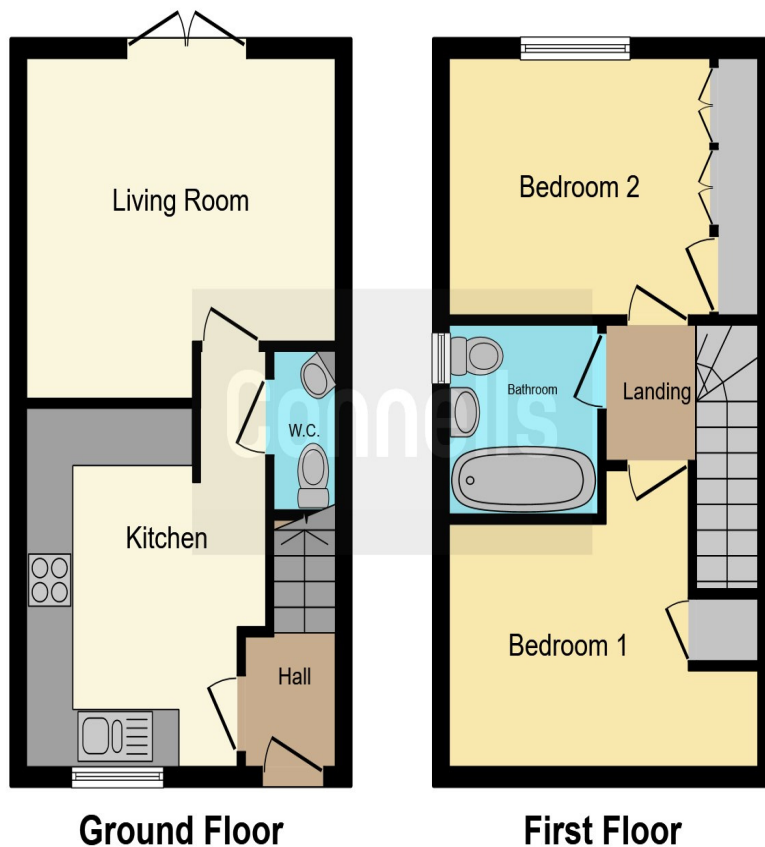
Bathroom

Modern white suite briefly comprising: bath with mixer taps, shower over head, wash hand basin, part tiling to walls, low level WC, central heating radiator, extractor fan, ceiling light point and double glazed obscure window to side elevation.

Rear Garden

A slab paved area leading to the good size lawn which is perfect for growing families to enjoy. There is fencing to the borders and a side gate giving access back to the front of the home.





This floor plan is for illustrative purposes only. It is not drawn to scale. Any measurements, floor areas (including any total floor area), openings and orientation are approximate. No details are guaranteed, they cannot be relied upon for any purpose and they do not form part of any agreement. No liability is taken for any error, omission or misstatement. A party must rely upon its own inspection(s). Powered by www.focalagent.com

To view this property please contact Connells on

T 01432 267 511
E hereford@connells.co.uk

23 King Street
 HEREFORD HR4 9BX

Property Ref: HER315742 - 0002

Tenure: Freehold EPC Rating: Awaiting

Council Tax Band: B

view this property online connells.co.uk/Property/HER315742



1. MONEY LAUNDERING REGULATIONS Intending purchasers will be asked to produce identification documentation at a later stage and we would ask for your co-operation in order that there will be no delay in agreeing the sale. 2. These particulars do not constitute part or all of an offer or contract. 3. The measurements indicated are supplied for guidance only and as such must be considered incorrect. Potential buyers are advised to recheck measurements before committing to any expense. 4. We have not tested any apparatus, equipment, fixtures, fittings or services and it is in the buyers interest to check the working condition of any appliances.

Connells Residential is registered in England and Wales under company number 1489613, Registered Office is Cumbria House, 16-20 Hockliffe Street, Leighton Buzzard, Bedfordshire, LU7 1GN. VAT Registration Number is 500 2481 05.

see all our properties at www.connells.co.uk | www.rightmove.co.uk | www.zoopla.co.uk