

for sale

£237,500



Coleridge Crescent Hereford HR4 0QH

This lovely three bedroom end-terrace home is located in a popular and convenient location, located to the North of Hereford City Centre. The location is perfect for the local schools, transport links and local amenities. The home itself offers great size rooms and is being sold with NO ONWARD CHAIN. Briefly comprising: off road parking, entrance hall, lounge, kitchen, utility room, first floor landing, three bedrooms, bathroom, separate W.C and a good size garden to the rear.

Coleridge Crescent Hereford HR4 0QH

Approach

A drop curb giving access to the stoned driveway with a side gate giving access to the rear garden. There is fencing to the borders and the door to the front gives access to:

Entrance Hall

Double glazed obscure door and window to front, central heating radiator, stairs leading to the first floor landing, ceiling light point and door leading to:

Lounge

20' x 11' 11" (6.10m x 3.63m)

Double glazed window to front elevation, double glazed French doors to rear giving access to the rear garden, two central heating radiators and ceiling light point.

Kitchen

11' 1" x 7' 3" (3.38m x 2.21m)

A fitted kitchen with wooden wall and base units and roll top work surfaces over, one and a half bowl sink and drainer, integrated oven, microwave, electric hob and cooker hood over, plumbing for washing machine, ceiling light point, double glazed window to rear elevation and door leading to the utility room.

Utility Room

17' 10" x 5' 10" max (5.44m x 1.78m max)

Double glazed door to rear giving access to the rear garden, double glazed obscure window to front elevation, space for fridge freezer, central heating radiator, ceiling light point and storage cupboard.



First Floor Landing

Airing cupboard which houses the central heating boiler, ceiling light point and doors to the following.

Bedroom One

12' 1" x 11' 9" max (3.68m x 3.58m max)

Double glazed window to front elevation, central heating radiator, built in wardrobes and ceiling light point.

Bedroom Two

11' 9" x 8' 10" (3.58m x 2.69m)

Double glazed window to front elevation, central heating radiator, built in wardrobes and ceiling light point.

Bedroom Three

9' x 7' 5" (2.74m x 2.26m)

Double glazed window to rear elevation, central heating radiator, built in wardrobes and ceiling light point.

Bathroom

A white suite briefly comprising: bath with mixer taps and shower head over, wash hand basin, part tiling to walls, central heating radiator, spotlights to the ceiling and double glazed obscure window to rear elevation.

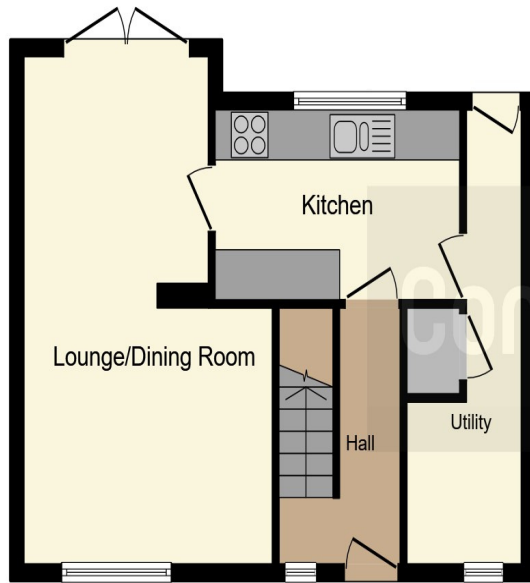
Separate W.C

Low level WC, ceiling light point and double glazed window to rear elevation.

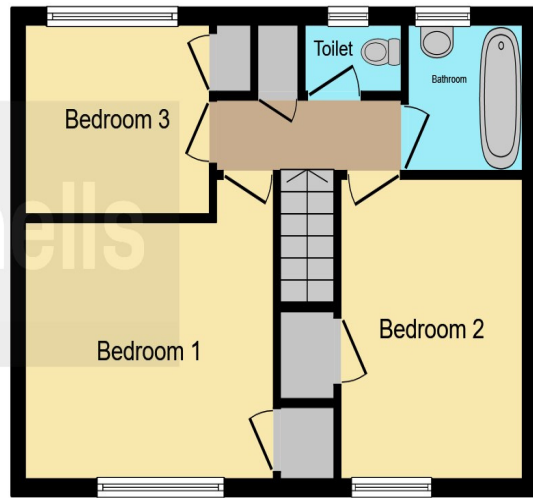
Rear Garden

A great size rear garden which is mainly laid to lawn with an area to the end which is decked and is a perfect area for entertaining guests. There are Mature shrubs and fencing to the borders and a side gate which gives access back to the front of the home.





Ground Floor



First Floor

This floor plan is for illustrative purposes only. It is not drawn to scale. Any measurements, floor areas (including any total floor area), openings and orientation are approximate. No details are guaranteed, they cannot be relied upon for any purpose and they do not form part of any agreement. No liability is taken for any error, omission or misstatement. A party must rely upon its own inspection(s). Powered by www.focalagent.com

To view this property please contact Connells on

T 01432 267 511
E hereford@connells.co.uk

23 King Street
 HEREFORD HR4 9BX

Property Ref: HER315794 - 0003

Tenure: Freehold EPC Rating: Awaiting

Council Tax Band: B

view this property online connells.co.uk/Property/HER315794



1. MONEY LAUNDERING REGULATIONS Intending purchasers will be asked to produce identification documentation at a later stage and we would ask for your co-operation in order that there will be no delay in agreeing the sale. 2. These particulars do not constitute part or all of an offer or contract. 3. The measurements indicated are supplied for guidance only and as such must be considered incorrect. Potential buyers are advised to recheck measurements before committing to any expense. 4. We have not tested any apparatus, equipment, fixtures, fittings or services and it is in the buyers interest to check the working condition of any appliances.

Connells Residential is registered in England and Wales under company number 1489613, Registered Office is Cumbria House, 16-20 Hockliffe Street, Leighton Buzzard, Bedfordshire, LU7 1GN. VAT Registration Number is 500 2481 05.

see all our properties at www.connells.co.uk | www.rightmove.co.uk | www.zoopla.co.uk