

for sale

£550,000



## Thistledown Panfield Braintree CM7 5AB

Discover your family's future in this exquisite three to four-bedroom detached residence nestled in a quiet cul-de-sac in the sought after village of Panfield.

This property is being sold with No Onward Chain, making it an ideal opportunity for a smooth and hassle-free purchase.





# Thistledown Panfield Braintree CM7 5AB

**Entrance Hall**

**Downstairs Cloakroom**

**Living Room**

22' x 12' 5" ( 6.71m x 3.78m )

**Kitchen/Diner**

15' 6" x 11' 5" ( 4.72m x 3.48m )

**Study**

10' 6" x 8' 3" ( 3.20m x 2.51m )

**First Floor Landing**

**Bedroom One**

12' 5" x 12' 4" ( 3.78m x 3.76m )

**En-Suite Shower Room**

**Bedroom Two**

12' 4" x 9' ( 3.76m x 2.74m )

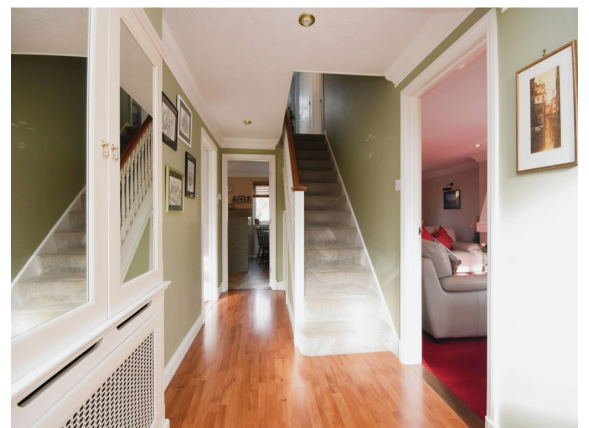
**Bedroom Three**

11' 6" x 10' 6" ( 3.51m x 3.20m )

**Bedroom Four**

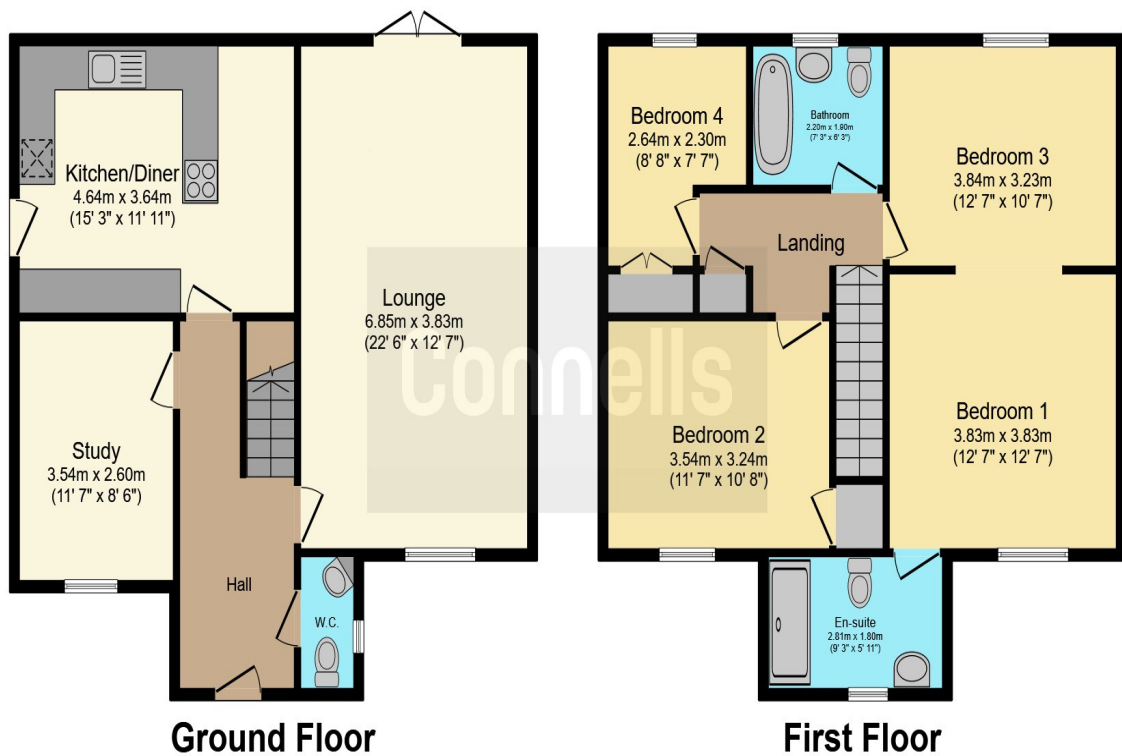
8' 8" x 7' 4" ( 2.64m x 2.24m )

**Family Bathroom**









This floor plan is for illustrative purposes only. It is not drawn to scale. Any measurements, floor areas (including any total floor area), openings and orientation are approximate. No details are guaranteed, they cannot be relied upon for any purpose and they do not form part of any agreement. No liability is taken for any error, omission or misstatement. A party must rely upon its own inspection(s). Powered by [www.focalagent.com](http://www.focalagent.com)

To view this property please contact Connells on

**T 01376 552 222**  
**E [braintree@connells.co.uk](mailto:braintree@connells.co.uk)**

17 Great Square  
 BRAINTREE CM7 1TX

Property Ref: BRT308272 - 0005

**Tenure:** Freehold

**EPC Rating:** D

**view this property online** [connells.co.uk/Property/BRT308272](http://connells.co.uk/Property/BRT308272)



1. MONEY LAUNDERING REGULATIONS Intending purchasers will be asked to produce identification documentation at a later stage and we would ask for your co-operation in order that there will be no delay in agreeing the sale. 2. These particulars do not constitute part or all of an offer or contract. 3. The measurements indicated are supplied for guidance only and as such must be considered incorrect. Potential buyers are advised to recheck measurements before committing to any expense. 4. We have not tested any apparatus, equipment, fixtures, fittings or services and it is in the buyers interest to check the working condition of any appliances.

Connells Residential is registered in England and Wales under company number 1489613, Registered Office is Cumbria House, 16-20 Hockliffe Street, Leighton Buzzard, Bedfordshire, LU7 1GN. VAT Registration Number is 500 2481 05.

see all our properties at [www.connells.co.uk](http://www.connells.co.uk) | [www.rightmove.co.uk](http://www.rightmove.co.uk) | [www.zoopla.co.uk](http://www.zoopla.co.uk)