

for sale

£500,000



## Searchlight Barn Skye Green Road Feering Colchester CO5 9RE

Introducing a stunning transformation: A beautifully converted three bedroom barn that redefines rustic elegance, nestled in the rural location of 'Feering'.





# Searchlight Barn Skye Green Road Feering Colchester CO5 9RE

## Entrance Hall

Stairs leading to the first floor, understair storage cupboard.

## Downstairs Cloakroom

Low level WC, hand wash basin.

## Living Room

16' 6" x 11' 8" ( 5.03m x 3.56m )

Double glazed window to the front aspect, floor to ceiling radiator, downlighters.

## Kitchen

24' x 11' 5" ( 7.32m x 3.48m )

Inset sink unit with left hand drainer with cupboard under, working

wood top surfaces to the side with a matching range of wall mounted units with further drawers and cupboards under, integrated Bosch dishwasher and fridge-freezer, built in oven, hob and extractor fan, double glazed bi-fold doors to the rear aspect, double glazed window to the rear aspect, floor to ceiling radiator.

## Utility Room

7' 7" x 6' ( 2.31m x 1.83m )

Inset stainless steel circular sink unit with cupboard under, working surface to the side with a matching range of base units, space and plumbing for appliances, storage cupboard.

## First Floor Landing

Vaulted ceiling, storage cupboard.



### **Bedroom One**

12' 7" x 11' 4" ( 3.84m x 3.45m )

Double glazed window to the rear aspect, radiator.

### **En-Suite Shower Room**

Low level WC, vanity hand wash basin with cupboard under, walk in double shower cubicle, heated towel rail, downlighters.

### **Bedroom Two**

16' 8" x 8' 6" ( 5.08m x 2.59m )

Double glazed window to the front aspect, radiator.

### **Bedroom Three**

12' 3" x 10' 2" ( 3.73m x 3.10m )

Double glazed window to the front aspect, radiator.

### **Family Bathroom**

Low level WC, vanity hand wash basin with cupboard under, bath with central tap, walk in double shower cubicle with rainforest shower unit, heated towel rail, downlighters, double glazed window to the rear aspect.

### **Rear Garden**

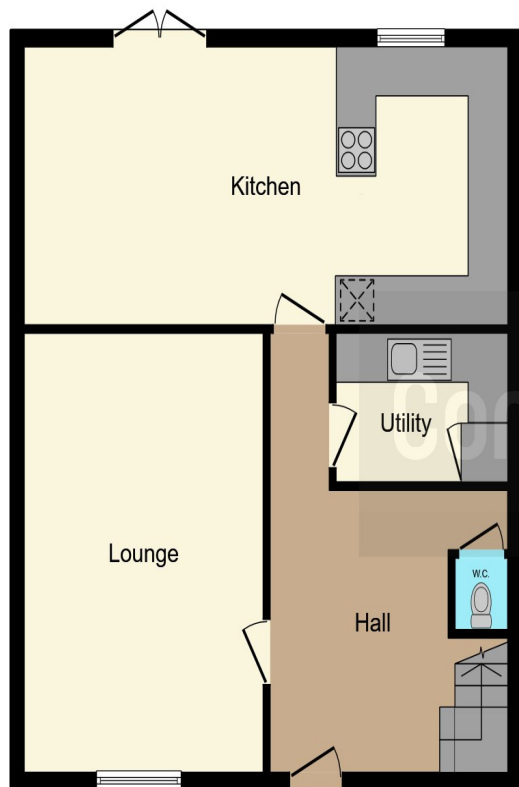
Will be top soiled and seeded for grass.

### **Agent Note**

The current front shot is advertising plot numbers two and three.







**Ground Floor**



**First Floor**

This floor plan is for illustrative purposes only. It is not drawn to scale. Any measurements, floor areas (including any total floor area), openings and orientation are approximate. No details are guaranteed, they cannot be relied upon for any purpose and they do not form part of any agreement. No liability is taken for any error, omission or misstatement. A party must rely upon its own inspection(s). Powered by [www.focalagent.com](http://www.focalagent.com)

To view this property please contact Connells on

**T 01376 552 222**  
**E [braintree@connells.co.uk](mailto:braintree@connells.co.uk)**

17 Great Square  
 BRAINTREE CM7 1TX

Property Ref: BRT308206 - 0005

**Tenure:** Freehold

**EPC Rating:** Exempt

**view this property online** [connells.co.uk/Property/BRT308206](http://connells.co.uk/Property/BRT308206)



1. MONEY LAUNDERING REGULATIONS Intending purchasers will be asked to produce identification documentation at a later stage and we would ask for your co-operation in order that there will be no delay in agreeing the sale. 2. These particulars do not constitute part or all of an offer or contract. 3. The measurements indicated are supplied for guidance only and as such must be considered incorrect. Potential buyers are advised to recheck measurements before committing to any expense. 4. We have not tested any apparatus, equipment, fixtures, fittings or services and it is in the buyers interest to check the working condition of any appliances.

Connells Residential is registered in England and Wales under company number 1489613, Registered Office is Cumbria House, 16-20 Hockliffe Street, Leighton Buzzard, Bedfordshire, LU7 1GN. VAT Registration Number is 500 2481 05.

see all our properties at [www.connells.co.uk](http://www.connells.co.uk) | [www.rightmove.co.uk](http://www.rightmove.co.uk) | [www.zoopla.co.uk](http://www.zoopla.co.uk)