

for sale

fixed price **£85,000**



## Homeweave House Robinsbridge Road Coggeshall Colchester CO6 1UL

Step into your dream retirement lifestyle with this delightful one-bedroom second floor apartment designed for the over 60's situated in the sought after Homeweave House development.

Impeccably presented and ready for you to move in with No Onward Chain.



# Homeweave House Robinsbridge Road Coggeshall Colchester CO6 1UL

## Entrance Hall

Two storage cupboards, heater.

## Living Room

19' 1" x 12' 8" ( 5.82m x 3.86m )

Double glazed window to the front and side aspect, storage cupboard, heater, archway leading to the kitchen.

## Kitchen

7' 3" x 5' 4" ( 2.21m x 1.63m )

Inset stainless steel circular bowl unit with cupboard under, working surfaces to the side with a matching range of wall mounted units with further drawers and cupboards up and under, built in oven, hob and extractor fan, space for appliances.

## Bedroom

17' 1" Sloped Ceiling x 8' 7" ( 5.21m Sloped Ceiling x 2.62m )

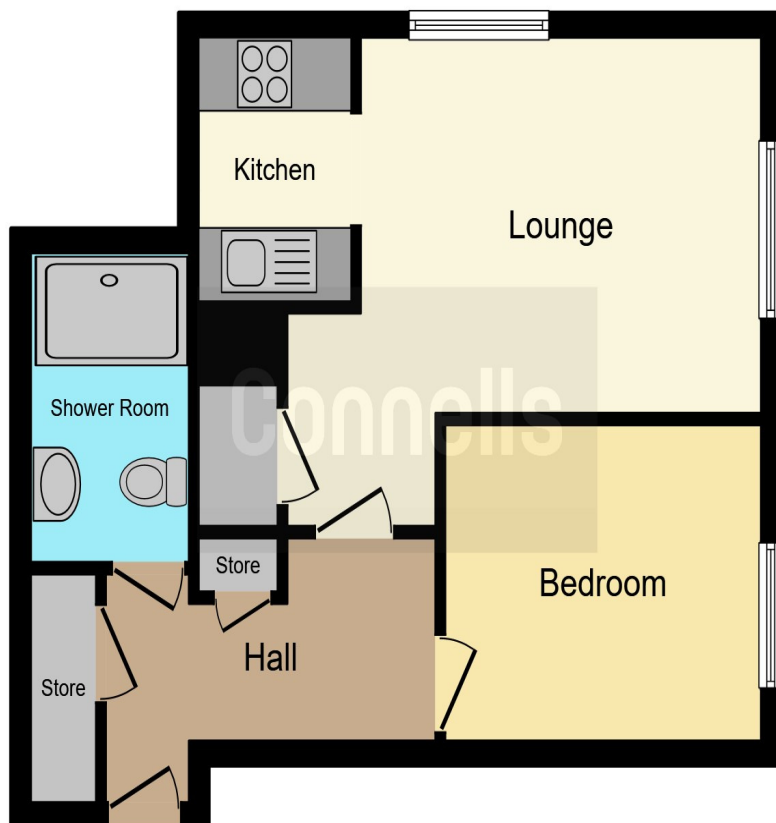
Double glazed window to the side aspect, built in mirror fronted wardrobes, heater.

## Shower Room

Low level WC, vanity hand wash basin with cupboard under, walk in double shower cubicle, heated towel rail.







This floor plan is for illustrative purposes only. It is not drawn to scale. Any measurements, floor areas (including any total floor area), openings and orientation are approximate. No details are guaranteed, they cannot be relied upon for any purpose and they do not form part of any agreement. No liability is taken for any error, omission or misstatement. A party must rely upon its own inspection(s). Powered by [www.focalagent.com](http://www.focalagent.com)

To view this property please contact Connells on

**T 01376 552 222**  
**E [braintree@connells.co.uk](mailto:braintree@connells.co.uk)**

17 Great Square  
 BRAINTREE CM7 1TX

Property Ref: BRT308002 - 0004

**Tenure:** Leasehold

**EPC Rating:** D

**view this property online [connells.co.uk/Property/BRT308002](http://connells.co.uk/Property/BRT308002)**

This is a Leasehold property with details as follows; Term of Lease 125 years from 01 Jul 1987. Should you require further information please contact the branch. Please Note additional fees could be incurred for items such as Leasehold packs.

1. MONEY LAUNDERING REGULATIONS Intending purchasers will be asked to produce identification documentation at a later stage and we would ask for your co-operation in order that there will be no delay in agreeing the sale. 2. These particulars do not constitute part or all of an offer or contract. 3. The measurements indicated are supplied for guidance only and as such must be considered incorrect. Potential buyers are advised to recheck measurements before committing to any expense. 4. We have not tested any apparatus, equipment, fixtures, fittings or services and it is in the buyers interest to check the working condition of any appliances.

Connells Residential is registered in England and Wales under company number 1489613, Registered Office is Cumbria House, 16-20 Hockliffe Street, Leighton Buzzard, Bedfordshire, LU7 1GN. VAT Registration Number is 500 2481 05.

