

for sale

guide price **£290,000**



Romney Close Braintree CM7 5TE

Brand new to market is this three bedroom terrace home perfectly suited to a first time buyer. Situated in a sought after location, this home offers the perfect combination of comfort and convenience.



Romney Close Braintree CM7 5TE

Entrance Porch

Doors leading to the entrance hall

Entrance Hall

Stairs leading to the first floor, understair storage cupboard, radiator, storage cupboard.

Cloakroom

Low level WC, hand wash basin, window to the front aspect.

Living Room

14' 4" x 11' (4.37m x 3.35m)

Window to the front aspect, radiator, open access to the dining

room

Dining Room

9' 1" x 8' 2" (2.77m x 2.49m)

Window and door to the rear aspect. radiator.

Kitchen

9' x 8' 5" (2.74m x 2.57m)

Inset sink unit one and a half bowl with right hand drainer with cupboard under, working surfaces to the side with a matching range of wall mounted units with further drawers and cupboards under, built in double oven, hob and extractor fan, space for fridge-freezer, washing machine and tumble dryer.

First Floor Landing



Storage cupboard, loft access.

Bedroom One

12' 6" x 10' 9" (3.81m x 3.28m)

Window to the front, radiator,

Bedroom Two

11' x 10' 2" (3.35m x 3.10m)

Window to the front aspect, radiator, storage cupboard.

Bedroom Three

9' 1" x 8' 5" (2.77m x 2.57m)

Window to the rear aspect, radiator, storage cupboard.

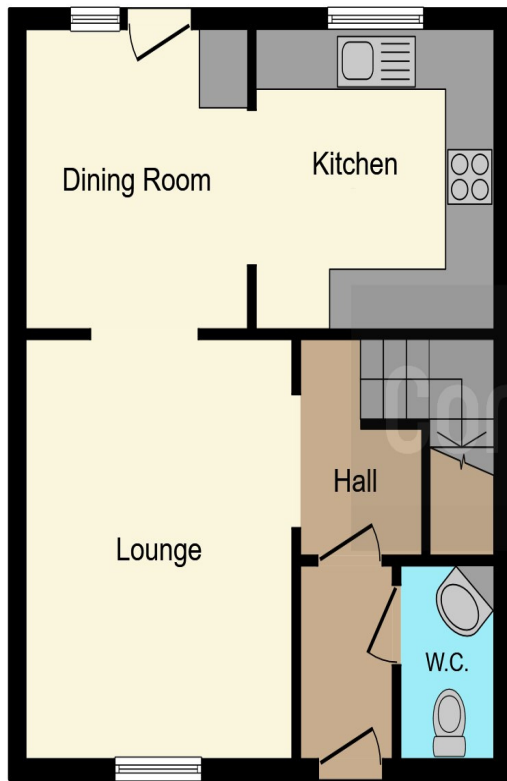
Family Bathroom

Low level WC, vanity hand wash basin with cupboard under, paneled bath with shower unit above, radiator, window to the rear aspect.

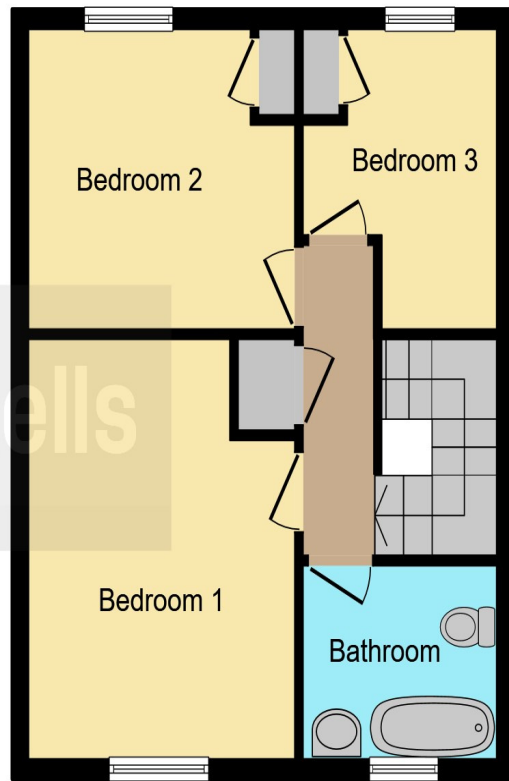
Rear Garden

Courtyard style, gate to the rear, courtesy door to the garage, brick built shed.





Ground Floor



First Floor

This floor plan is for illustrative purposes only. It is not drawn to scale. Any measurements, floor areas (including any total floor area), openings and orientation are approximate. No details are guaranteed, they cannot be relied upon for any purpose and they do not form part of any agreement. No liability is taken for any error, omission or misstatement. A party must rely upon its own inspection(s). Powered by www.focalagent.com

To view this property please contact Connells on

T 01376 552 222
E braintree@connells.co.uk

17 Great Square
 BRAINTREE CM7 1TX

Property Ref: BRT307954 - 0004

Tenure: Freehold

EPC Rating: C

view this property online connells.co.uk/Property/BRT307954



1. MONEY LAUNDERING REGULATIONS Intending purchasers will be asked to produce identification documentation at a later stage and we would ask for your co-operation in order that there will be no delay in agreeing the sale. 2. These particulars do not constitute part or all of an offer or contract. 3. The measurements indicated are supplied for guidance only and as such must be considered incorrect. Potential buyers are advised to recheck measurements before committing to any expense. 4. We have not tested any apparatus, equipment, fixtures, fittings or services and it is in the buyers interest to check the working condition of any appliances.

Connells Residential is registered in England and Wales under company number 1489613, Registered Office is Cumbria House, 16-20 Hockliffe Street, Leighton Buzzard, Bedfordshire, LU7 1GN. VAT Registration Number is 500 2481 05.

see all our properties at www.connells.co.uk | www.rightmove.co.uk | www.zoopla.co.uk