

for sale

offers over **£250,000**



Howard Close Braintree CM7 3DS

This two bedroom semi-detached home is an ideal choice for first time buyers, offering a comfortable living space.

This home is being sold with No Onward Chain, making it an ideal opportunity for a smooth and hassle-free purchase.



Howard Close Braintree CM7 3DS

Entrance Hall

Stairs leading to the first floor, radiator

Living Room/dining Room

22' 3" x 10' 7" (6.78m x 3.23m)

Window to the front and rear aspect, storage cupboard, two radiators.

Kitchen

10' 7" x 6' 4" (3.23m x 1.93m)

Inset sink unit one and a half bowl with left hand drainer with cupboard under, working surfaces to the side with a matching range of wall mounted units with further drawers and cupboards under, built in oven and hob, space for fridge-freezer and washing machine, door to the side aspect, window to the side

aspect.

First Floor Landing

Loft Access, window to the side

Bedroom One

14' 6" x 10' 3" (4.42m x 3.12m)

Two windows to the front aspect, radiator.

Bedroom Two

11' 5" x 8' 8" (3.48m x 2.64m)

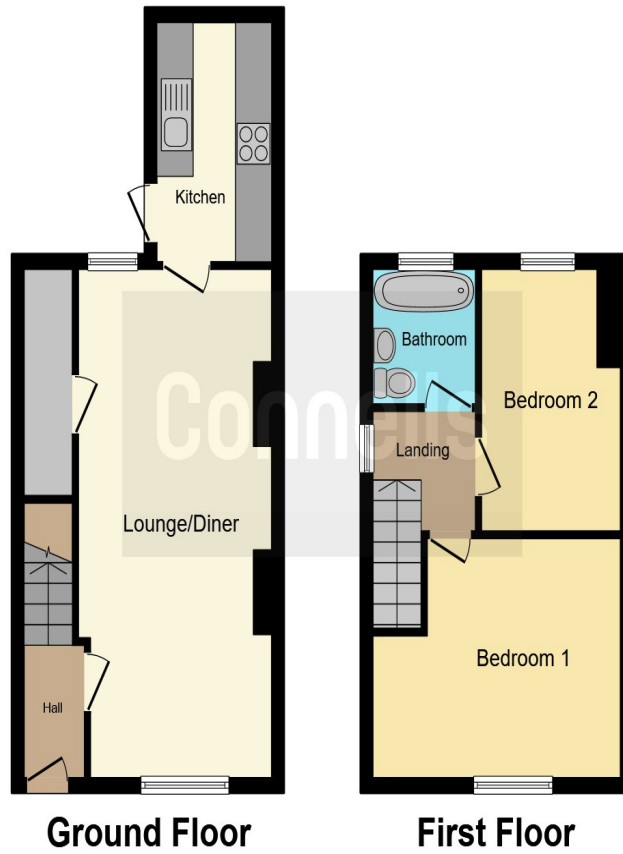
Window to the rear aspect, radiator.

Family Bathroom



Low level WC, pedestal hand wash basin, paneled bath with shower unit above, radiator, window to the rear aspect





This floor plan is for illustrative purposes only. It is not drawn to scale. Any measurements, floor areas (including any total floor area), openings and orientation are approximate. No details are guaranteed, they cannot be relied upon for any purpose and they do not form part of any agreement. No liability is taken for any error, omission or misstatement. A party must rely upon its own inspection(s). Powered by www.focalagent.com

To view this property please contact Connells on

T 01376 552 222
E braintree@connells.co.uk

17 Great Square
 BRAINTREE CM7 1TX

Property Ref: BRT307886 - 0006

Tenure: Freehold

EPC Rating: C

view this property online connells.co.uk/Property/BRT307886



1. MONEY LAUNDERING REGULATIONS Intending purchasers will be asked to produce identification documentation at a later stage and we would ask for your co-operation in order that there will be no delay in agreeing the sale. 2. These particulars do not constitute part or all of an offer or contract. 3. The measurements indicated are supplied for guidance only and as such must be considered incorrect. Potential buyers are advised to recheck measurements before committing to any expense. 4. We have not tested any apparatus, equipment, fixtures, fittings or services and it is in the buyers interest to check the working condition of any appliances.

Connells Residential is registered in England and Wales under company number 1489613, Registered Office is Cumbria House, 16-20 Hockliffe Street, Leighton Buzzard, Bedfordshire, LU7 1GN. VAT Registration Number is 500 2481 05.

see all our properties at www.connells.co.uk | www.rightmove.co.uk | www.zoopla.co.uk