

for sale

offers in excess of **£280,000**



Wheatfield Avenue Chippenham SN14 0FX

End of terrace. Newer Build. Two Bedrooms. Bathroom. Parking, Great Size Plot, Fantastic Sought after location, Close to Amenities. Viewing Advised.



Wheatfield Avenue Chippenham SN14 0FX

Description

This attractive two-bedroom end-of-terrace property offers modern living in a popular residential area of Chippenham. Perfect for first-time buyers, downsizers, or investors, the home combines comfort, convenience, and excellent local amenities.

This home offers a fantastic opportunity to enjoy modern living in a well-connected location. Early viewing is highly recommended.



Ground Floor

Hallway

Entrance door to front. Stairs to First Floor.

Lounge

14' 8" x 10' 5" (4.47m x 3.17m)

Window to front. TV point. Understairs storage cupboard.

Kitchen

10' 5" x 9' 8" (3.17m x 2.95m)

French doors to rear. Fitted with a matching range of base and wall units with inset sink and drainer. Integrated oven and hob. Further appliance space. Door to Utility Room.

Utility

5' 3" x 3' 2" (1.60m x 0.97m)

Door to Cloakroom.

Downstairs Cloakroom

Suite comprising low level WC and wash handbasin.

Bathroom

Three piece suite comprising low level WC wash hand basin and panelled bath. Window to side.

Outside

Rear Garden

Low maintenance and mainly to decking. Fully enclosed.

Parking

Two allocated parking spaces.

First Floor

Bedroom One

8' 10" x 8' 11" (2.69m x 2.72m)

Window to rear. Built in wardrobe. Door to Ensuite.

Ensuite

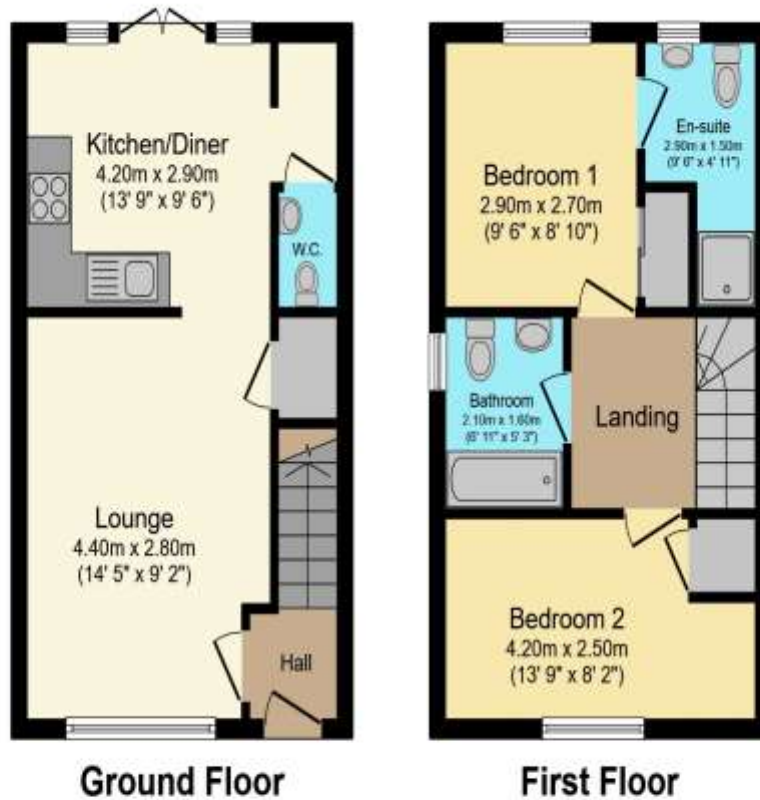
Suite comprising low level WC, wash hand basin and shower cubicle.

Bedroom Two

8' 2" x 11' 11" to wardrobe (2.49m x 3.63m to wardrobe)

Window to front. Built in wardrobe.





Total floor area 62.2 m² (669 sq.ft.) approx.

This floor plan is for illustrative purposes only. It is not drawn to scale. Any measurements, floor areas (including any total floor area), openings and orientation are approximate. No details are guaranteed, they cannot be relied upon for any purpose and they do not form part of any agreement. No liability is taken for any error, omission or misstatement. A party must rely upon its own inspection(s). Powered by www.propertybox.io



To view this property please contact Connells on

T 01249 652 476
E chippenham@connells.co.uk

59 Market Place
 CHIPPENHAM SN15 3HL

Property Ref: CHM306409 - 0003

Tenure: Freehold EPC Rating: B

Council Tax Band: C

view this property online connells.co.uk/Property/CHM306409



1. MONEY LAUNDERING REGULATIONS Intending purchasers will be asked to produce identification documentation at a later stage and we would ask for your co-operation in order that there will be no delay in agreeing the sale. 2. These particulars do not constitute part or all of an offer or contract. 3. The measurements indicated are supplied for guidance only and as such must be considered incorrect. Potential buyers are advised to recheck measurements before committing to any expense. 4. We have not tested any apparatus, equipment, fixtures, fittings or services and it is in the buyers interest to check the working condition of any appliances.

Connells Residential is registered in England and Wales under company number 1489613, Registered Office is Cumbria House, 16-20 Hockliffe Street, Leighton Buzzard, Bedfordshire, LU7 1GN. VAT Registration Number is 500 2481 05.

see all our properties at www.connells.co.uk | www.rightmove.co.uk | www.zoopla.co.uk