

for sale

£280,000



## Lowden CHIPPENHAM SN15 2BS

A charming period style property arranged over three floors and retaining many original features.

The property comprises Sitting Room, Dining Room and Kitchen to the Ground Floor, Bedroom One and Bathroom to the First Floor and Bedroom Two/Loft Room to the Second Floor

Residential Sales & Lettings | Mortgage Services |  
Conveyancing | Surveyors | Land & New Homes





# Lowden CHIPPENHAM SN15 2BS

## Ground Floor

Entrance door to front.

### Sitting Room

12' 7" max x 11' 9" ( 3.84m max x 3.58m )

Box bay window to front. Feature fireplace with inset wood burner. Radiator. Open plan leading through to the Dining Room.

### Dining Room

12' 8" x 9' 2" ( 3.86m x 2.79m )

Stairs to First Floor. Under stairs storage cupboard. Door to Kitchen. Radiator.

### Kitchen

Window to side. Window to rear. Door to side. Fitted with a matching range of base and wall units with roll edge work surfaces over and inset sink and drainer. Space for cooker. Plumbing for washing machine.

## First Floor

### Bedroom One

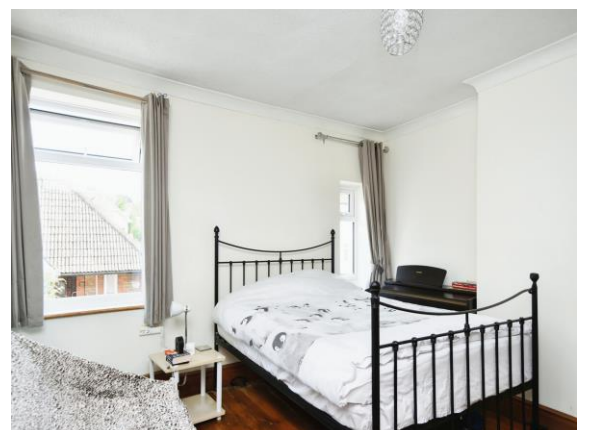
12' 9" x 11' 6" ( 3.89m x 3.51m )

Two windows to front. Radiator. Built in cupboard.

### Landing

Stairs from Ground Floor. Doors to Bedroom and Bathroom.

### Bathroom



Window to rear. Suite comprising low level WC, wash hand basin and bath with shower over. Part tiled walls. Radiator.

## Second Floor

### Landing

Stairs from second floor. Original feature fireplace. Built in wardrobe. Window to front. Sky light window. Sloping ceiling with restricted head height. Radiator.

### Bedroom Two/Loft Room

12' 3" max x 10' 6" max ( 3.73m max x 3.20m max )  
Window to front. Skylight window. Built in eaves storage. Feature original fireplace.

## Outside

### Rear Garden

Well established rear garden, fully enclosed. Patio area with steps down to the lawn area.







This floor plan is for illustrative purposes only. It is not drawn to scale. Any measurements, floor areas (including any total floor area), openings and orientation are approximate. No details are guaranteed, they cannot be relied upon for any purpose and they do not form part of any agreement. No liability is taken for any error, omission or misstatement. A party must rely upon its own inspection(s). Powered by [www.focalagent.com](http://www.focalagent.com)

To view this property please contact Connells on

**T 01249 652 476**  
**E [chippenham@connells.co.uk](mailto:chippenham@connells.co.uk)**

59 Market Place  
 CHIPPENHAM SN15 3HL

Property Ref: CHM306007 - 0008

**Tenure:** Freehold

**EPC Rating:** D

**view this property online [connells.co.uk/Property/CHM306007](http://connells.co.uk/Property/CHM306007)**



1. MONEY LAUNDERING REGULATIONS Intending purchasers will be asked to produce identification documentation at a later stage and we would ask for your co-operation in order that there will be no delay in agreeing the sale. 2. These particulars do not constitute part or all of an offer or contract. 3. The measurements indicated are supplied for guidance only and as such must be considered incorrect. Potential buyers are advised to recheck measurements before committing to any expense. 4. We have not tested any apparatus, equipment, fixtures, fittings or services and it is in the buyers interest to check the working condition of any appliances.

Connells Residential is registered in England and Wales under company number 1489613, Registered Office is Cumbria House, 16-20 Hockliffe Street, Leighton Buzzard, Bedfordshire, LU7 1GN. VAT Registration Number is 500 2481 05.

see all our properties at [www.connells.co.uk](http://www.connells.co.uk) | [www.rightmove.co.uk](http://www.rightmove.co.uk) | [www.zoopla.co.uk](http://www.zoopla.co.uk)