



Connells

Charfield Road
Bristol

Charfield Road
Bristol BS10 5QP

for sale offers in excess of
£300,000



Property Description

This three bedroom semi detached family home offers a SUBSTANTIAL plot with large gardens and plentiful off road parking located in a prime spot close to the many shops, amenities and hospital of Southmead.

The property is situated in close proximity to major employers such as Southmead hospital, Airbus and the MoD. Westbury high street is also within a relatively short walk where there are a number of independent bars & cafés as well as local shops & amenities. This side of Bristol also offers residents access to the countryside of South Gloucestershire as well as the M4 and M5 motorways.

Entrance Porch

Entrance Hall

Lounge

13' 5" x 11' 5" (4.09m x 3.48m)

Kitchen

11' 9" x 11' 9" (3.58m x 3.58m)

Conservatory

17' 6" x 8' 11" (5.33m x 2.72m)

Bedroom 1

11' 7" x 7' 11" (3.53m x 2.41m)

Bedroom 2

9' 4" x 8' 1" (2.84m x 2.46m)

Bedroom 3

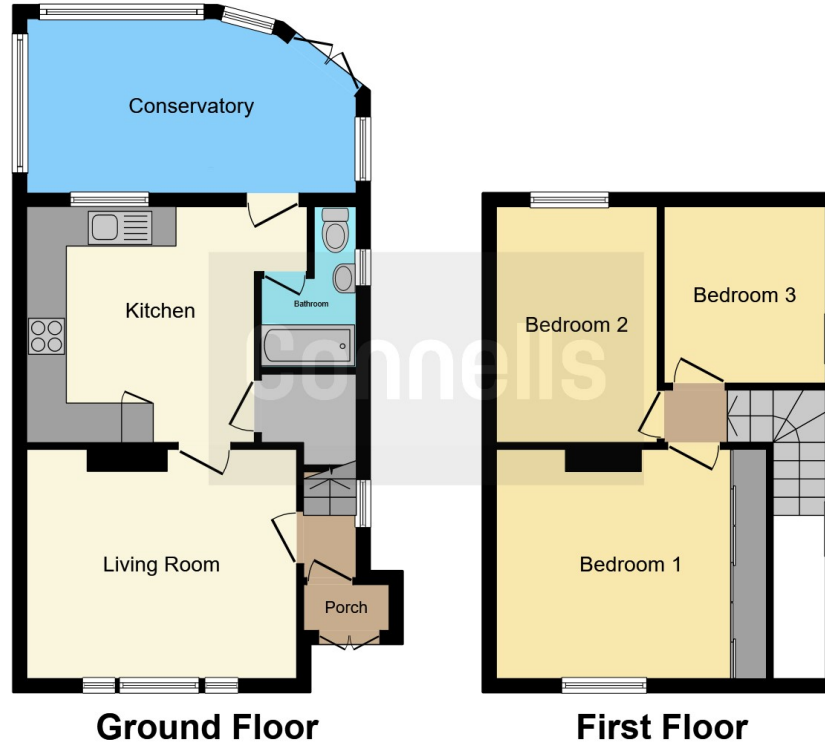
11' 8" x 11' 5" (3.56m x 3.48m)

Bathroom









This floor plan is for illustrative purposes only. It is not drawn to scale. Any measurements, floor areas (including any total floor area), openings and orientation are approximate. No details are guaranteed, they cannot be relied upon for any purpose and they do not form part of any agreement. No liability is taken for any error, omission or misstatement. A party must rely upon its own inspection(s). Powered by www.focalagent.com

To view this property please contact Connells on

T 0117 950 1552
E westburyontrym@connells.co.uk

6 Canford Lane
 BRISTOL BS9 3DH

EPC Rating: C

view this property online connells.co.uk/Property/WOT308736

Tenure: Freehold



1. MONEY LAUNDERING REGULATIONS Intending purchasers will be asked to produce identification documentation at a later stage and we would ask for your co-operation in order that there will be no delay in agreeing the sale. 2. These particulars do not constitute part or all of an offer or contract. 3. The measurements indicated are supplied for guidance only and as such must be considered incorrect. Potential buyers are advised to recheck measurements before committing to any expense. 4. We have not tested any apparatus, equipment, fixtures, fittings or services and it is in the buyers interest to check the working condition of any appliances.

Connells Residential is registered in England and Wales under company number 1489613, Registered Office is Cumbria House, 16-20 Hockliffe Street, Leighton Buzzard, Bedfordshire, LU7 1GN. VAT Registration Number is 500 2481 05.

See all our properties at www.connells.co.uk | www.rightmove.co.uk | www.zoopla.co.uk

Property Ref: WOT308736 - 0003