



Connells

Laurel Way
Southmead Bristol

Laurel Way Southmead Bristol BS10 6FW

for sale offers in excess of
£325,000



Property Description

Built within the last 3 years the Dunmail road development consists of 161 beautifully curated homes with rich landscaping linking to open parkland in Southmead, Bristol. Originally designed as a Garden Suburb, Southmead lies within a pleasant green environment of open parkland and wooded areas.

These generously spaced homes sit amid a green realm of private gardens, tree-lined avenues and footpaths. At the heart of it all runs a wide landscaped lane, offering a safe and welcoming community space for residents and their families to meet and gather, relax and play.

Loft Space

Rear Garden

Outbuilding

Communal Off Road Parking

Entrance Hall

Cloakroom

Lounge

13' 9" x 16' 4" Max (4.19m x 4.98m Max)

Kitchen/Dining

12' 8" x 12' 8" (3.86m x 3.86m)

Landing

Bedroom 1

13' 6" Max x 10' 3" (4.11m Max x 3.12m)

Ensuite

Bedroom 2

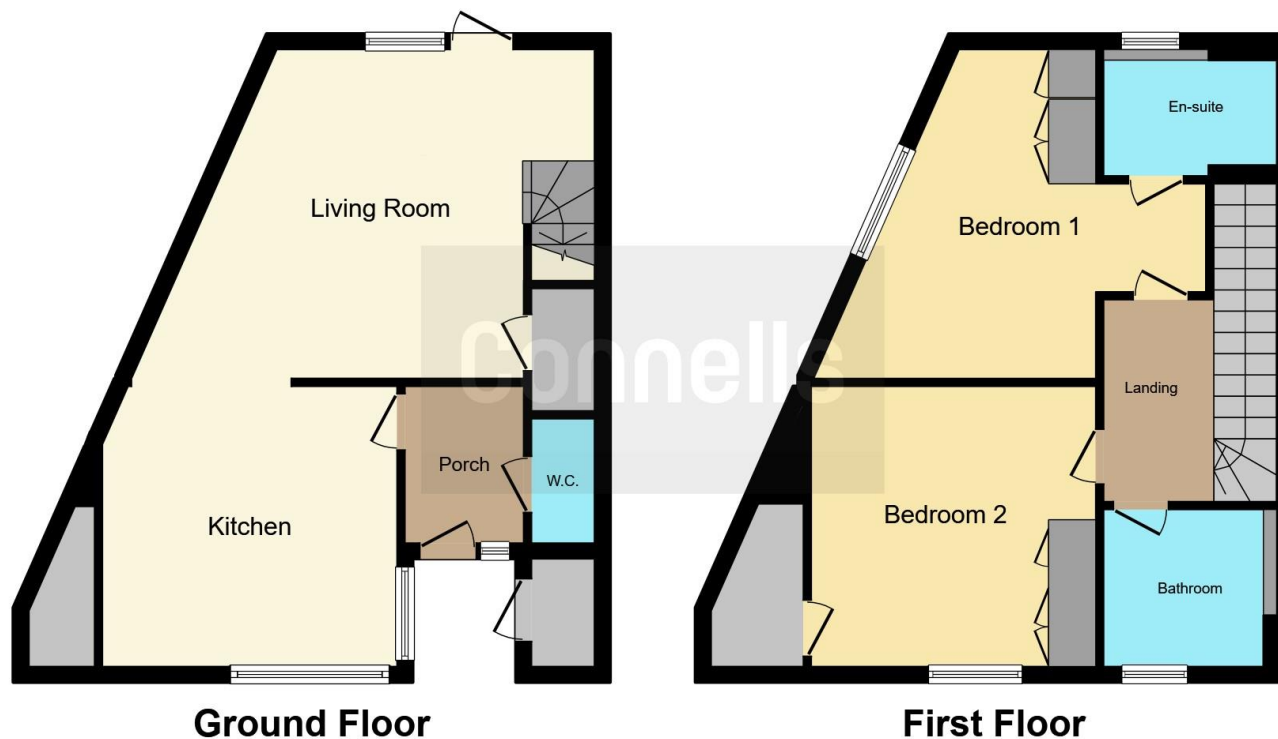
15' 8" x 15' 2" (4.78m x 4.62m)

Bathroom









This floor plan is for illustrative purposes only. It is not drawn to scale. Any measurements, floor areas (including any total floor area), openings and orientation are approximate. No details are guaranteed, they cannot be relied upon for any purpose and they do not form part of any agreement. No liability is taken for any error, omission or misstatement. A party must rely upon its own inspection(s). Powered by www.focalagent.com

To view this property please contact Connells on

T 0117 950 1552
E westburyontrym@connells.co.uk

6 Canford Lane
 BRISTOL BS9 3DH

EPC Rating: B

Tenure: Freehold

view this property online connells.co.uk/Property/WOT308780



1. MONEY LAUNDERING REGULATIONS Intending purchasers will be asked to produce identification documentation at a later stage and we would ask for your co-operation in order that there will be no delay in agreeing the sale. 2. These particulars do not constitute part or all of an offer or contract. 3. The measurements indicated are supplied for guidance only and as such must be considered incorrect. Potential buyers are advised to recheck measurements before committing to any expense. 4. We have not tested any apparatus, equipment, fixtures, fittings or services and it is in the buyers interest to check the working condition of any appliances.

Connells Residential is registered in England and Wales under company number 1489613, Registered Office is Cumbria House, 16-20 Hockliffe Street, Leighton Buzzard, Bedfordshire, LU7 1GN. VAT Registration Number is 500 2481 05.

See all our properties at www.connells.co.uk | www.rightmove.co.uk | www.zoopla.co.uk

Property Ref: WOT308780 - 0005