



**Connells**

Greystoke Gardens  
Bristol



# Greystoke Gardens Bristol BS10 6AB

for sale offers in excess of  
**£260,000**



## Property Description

Westbury-on-Trym has so much to boast, from excellent properties, a suburbia village-like atmosphere, vibrant high street and so much more. Westbury-on-Trym is home to the greatest concentration of retirees in the city, and also has one of the most highly educated populations, too.

In terms of outlook, Westbury-on-Trym is undoubtedly one of the city's leading places to live. Property prices are among the highest in Bristol, but the range of property styles and sizes is unrivalled. Most homes are either semi-detached or detached and pretty much all will boast large rear gardens and off-street parking. There are some newer build apartments of high specifications, while in and around the village centre, smaller cottage-like homes abound.

This juxtaposition of styles is reflected in the population. Yes, there are plenty of retirees, but a great deal of the two- and three-bedroom properties belong to families, and there is a regular influx of young professionals moving into the area to take advantage of everything Westbury-on-Trym has to offer — space, safety, attractive surroundings, a solid sense of community, access to the best schools and parks in the city, and a real connection with village life.

Westbury-on-Trym has so much to boast, from excellent properties, a suburbia village-like atmosphere, vibrant high street and so much more. Westbury-on-Trym is home to the greatest concentration of retirees in the city, and also has one of the most highly educated populations, too.

In terms of outlook, Westbury-on-Trym is undoubtedly one of the city's leading places to live. Property prices are among the highest in Bristol, but the range of property styles and sizes is unrivalled. Most homes are either semi-detached or detached and pretty much all will boast large rear gardens and off-street parking. There are some newer build apartments of high specifications, while in and around the village centre, smaller cottage-like homes abound.

This juxtaposition of styles is reflected in the population. Yes, there are plenty of retirees, but a great deal of the two- and three-bedroom properties belong to families, and there is a regular influx of young professionals moving into the area to take advantage of everything Westbury-on-Trym has to offer — space, safety, attractive surroundings, a solid sense of community, access to the best schools and parks in the city, and a real connection with village life.

Westbury-on-Trym has so much to boast, from excellent properties, a suburbia village-like atmosphere, vibrant high street and so much more. Westbury-on-Trym is home to the greatest concentration of retirees in the city, and also has one of the most highly educated populations, too.

In terms of outlook, Westbury-on-Trym is undoubtedly one of the city's leading places to live. Property prices are among the highest in Bristol, but the range of property styles and sizes is unrivalled. Most homes are either semi-detached or detached and pretty much all will boast large rear gardens and off-street parking. There are some newer build apartments of high specifications, while in and



around the village centre, smaller cottage-like homes abound.

This juxtaposition of styles is reflected in the population. Yes, there are plenty of retirees, but a great deal of the two- and three-bedroom properties belong to families, and there is a regular influx of young professionals moving into the area to take advantage of everything Westbury-on-Trym has to offer — space, safety, attractive surroundings, a solid sense of community, access to the best schools and parks in the city, and a real connection with village life.

Westbury-on-Trym has so much to boast, from excellent properties, a suburbia village-like atmosphere, vibrant high street and so much more. Westbury-on-Trym is home to the greatest concentration of retirees in the city, and also has one of the most highly educated populations, too.

In terms of outlook, Westbury-on-Trym is undoubtedly one of the city's leading places to live. Property prices are among the highest in Bristol, but the range of property styles and sizes is unrivalled. Most homes are either semi-detached or detached and pretty much all will boast large rear gardens and off-street parking. There are some newer build apartments of high specifications, while in and around the village centre, smaller cottage-like homes abound.

This juxtaposition of styles is reflected in the population. Yes, there are plenty of retirees, but a great deal of the two- and three-bedroom properties belong to families, and there is a regular influx of young professionals moving into the area to take advantage of everything Westbury-on-Trym has to offer — space, safety, attractive surroundings, a solid sense of community, access to the best schools and parks in the city, and a real

connection with village life.



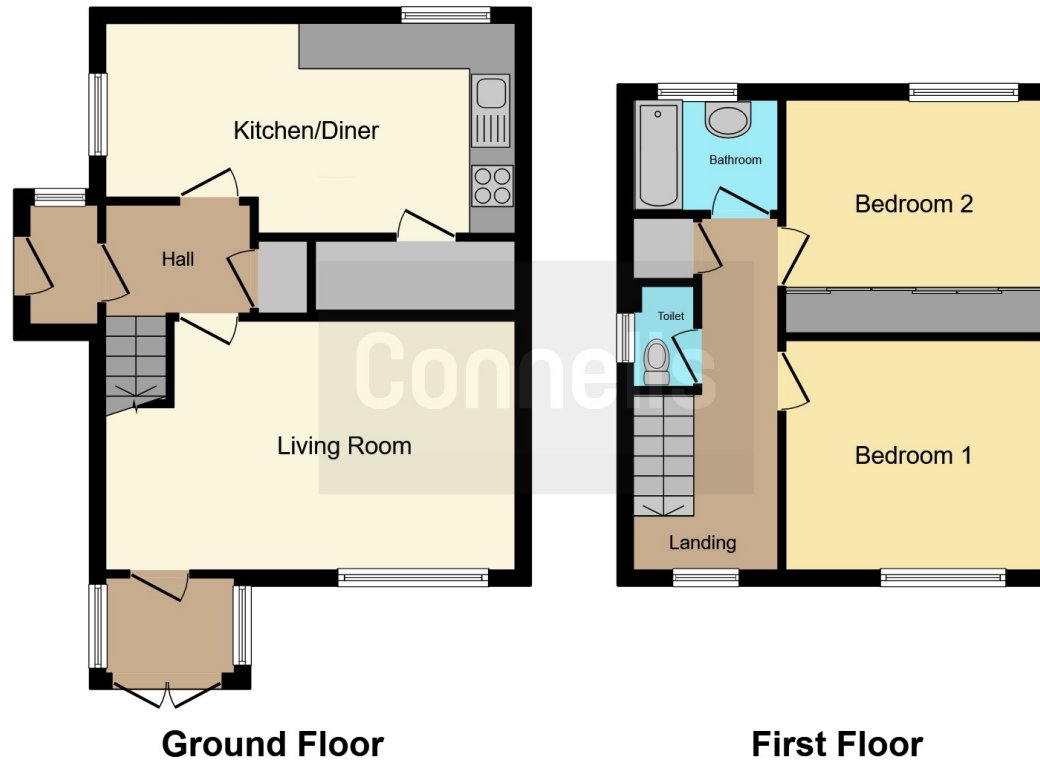












This floorplan is for illustrative purposes only and is not drawn to scale. Measurements, floor-areas, openings and orientations are approximate. They should not be relied upon for any purpose and do not form any part of an agreement. No liability is taken for any error or mis-statement. All parties must rely on their own inspections.

To view this property please contact Connells on

**T 0117 950 1552**  
**E [westburyontrym@connells.co.uk](mailto:westburyontrym@connells.co.uk)**

6 Canford Lane  
 BRISTOL BS9 3DH

**EPC Rating: D**

**view this property online [connells.co.uk/Property/WOT307882](http://connells.co.uk/Property/WOT307882)**

Tenure: Freehold



1. MONEY LAUNDERING REGULATIONS Intending purchasers will be asked to produce identification documentation at a later stage and we would ask for your co-operation in order that there will be no delay in agreeing the sale. 2. These particulars do not constitute part or all of an offer or contract. 3. The measurements indicated are supplied for guidance only and as such must be considered incorrect. Potential buyers are advised to recheck measurements before committing to any expense. 4. We have not tested any apparatus, equipment, fixtures, fittings or services and it is in the buyers interest to check the working condition of any appliances.

Connells Residential is registered in England and Wales under company number 1489613, Registered Office is Cumbria House, 16-20 Hockliffe Street, Leighton Buzzard, Bedfordshire, LU7 1GN. VAT Registration Number is 500 2481 05.

**See all our properties at [www.connells.co.uk](http://www.connells.co.uk) | [www.rightmove.co.uk](http://www.rightmove.co.uk) | [www.zoopla.co.uk](http://www.zoopla.co.uk)**

Property Ref: WOT307882 - 0009