



Connells

Edmonton Close
Kesgrave Ipswich



Property Description

Located in the popular area of Kesgrave lies this Mid-Terraced Family Home, it is conveniently situated for local schooling facilities including Heath primary and Kesgrave high school as well as a range of shopping facilities, a doctors surgery and access to the A12 and A14.

Nearby Ipswich is the County Town of Suffolk and has the benefit of being home to a mainline railway station that gives direct access into London Liverpool Street, Cambridge, Norwich and many more destinations. It also has a rejuvenated waterfront Marina which boasts many restaurants, bars and cafes.

The property further benefits from three bedrooms, lounge, Kitchen/Diner, front & rear gardens, off road parking and no onward chain.

Entrance Hall

Entrance via upvc double glazed entrance door, stairs rising to the first floor, double storage cupboard and doors giving access to:

Lounge

15' 10" x 12' 5" (4.83m x 3.78m)

Upvc double glazed window to front, radiator, smooth ceiling, storage cupboard, wood effect flooring and doors giving access to:

Kitchen/diner

19' 2" x 10' 5" (5.84m x 3.17m)

Two upvc double glazed windows to rear, upvc double glazed door giving access to the rear garden, space for fridge freezer, built in oven, built in hob with extractor hood over, tiled splash backs, space and plumbing for washing machine, space for tumble dryer, space for dish washer, 1 1/2 bowl drainage unit set into a roll edge work surface with cupboards below and matching above, cupboard housing wall mounted boiler, wood effect flooring, radiator, textured ceiling.

First Floor Landing

Smooth ceiling, radiator, airing cupboard and doors giving access to:

Bedroom One

12' 4" x 10' 6" (3.76m x 3.20m)

Double glazed window to rear, radiator and smooth ceiling.

Bedroom Two

12' 6" x 8' 3" (3.81m x 2.51m)

Double glazed window to front, radiator and smooth ceiling.

Bedroom Three

9' 2" x 7' 1" (2.79m x 2.16m)

Double glazed window to front, radiator, smooth ceiling and storage cupboard.

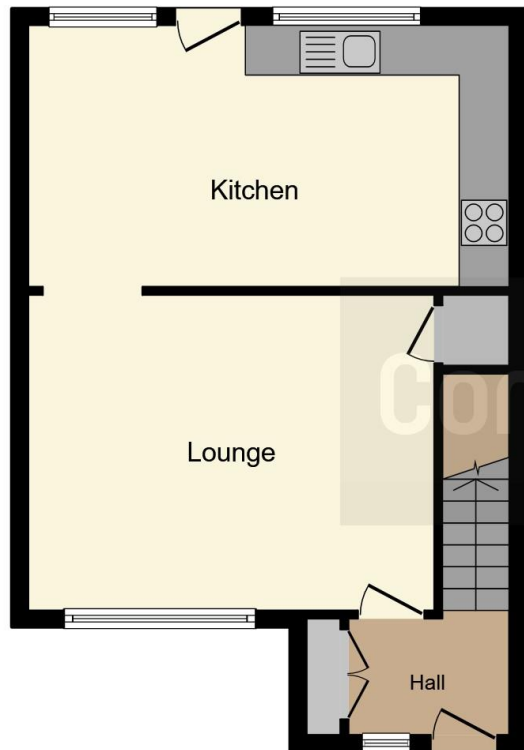
Family Bathroom

Upvc double glazed window to rear, shower/ bath with mixer tap and shower attachment, tiled walls, pedestal wash hand basin with mixer tap, low level w/c, heated towel rail, tiled floor and smooth ceiling with extractor fan.

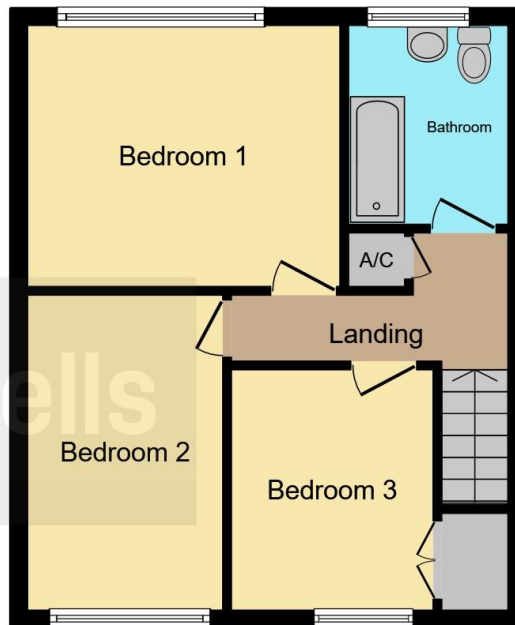
Outside

The front of the property is laid to blue slate chips with pathway leading to the entrance door, the rear garden has a decked patio area with the remainder being laid to lawn and gated rear access to the off road parking space.





Ground Floor



First Floor

This floorplan is for illustrative purposes only and is not drawn to scale. Measurements, floor-areas, openings and orientations are approximate. They should not be relied upon for any purpose and do not form any part of an agreement. No liability is taken for any error or mis-statement. All parties must rely on their own inspections.

To view this property please contact Connells on

T 01473 233 966
E ipswich@connells.co.uk

6 Princes Street
 IPSWICH IP1 1QT

EPC Rating: D

view this property online connells.co.uk/Property/ICH310439



Tenure: Freehold



1. MONEY LAUNDERING REGULATIONS Intending purchasers will be asked to produce identification documentation at a later stage and we would ask for your co-operation in order that there will be no delay in agreeing the sale. 2. These particulars do not constitute part or all of an offer or contract. 3. The measurements indicated are supplied for guidance only and as such must be considered incorrect. Potential buyers are advised to recheck measurements before committing to any expense. 4. We have not tested any apparatus, equipment, fixtures, fittings or services and it is in the buyers interest to check the working condition of any appliances.

Connells Residential is registered in England and Wales under company number 1489613, Registered Office is Cumbria House, 16-20 Hockliffe Street, Leighton Buzzard, Bedfordshire, LU7 1GN. VAT Registration Number is 500 2481 05.

See all our properties at www.connells.co.uk | www.rightmove.co.uk | www.zoopla.co.uk

Property Ref: ICH310439 - 0031