



Not for marketing purposes INTERNAL USE ONLY

Ashcott
Bristol

Ashcott Bristol BS14 0AG

for sale
£280,000



Property Description

This charming terraced home, in good condition and ready for new owners, offers generous living space. It features two reception rooms—a bright front lounge and a rear dining room. The well-appointed kitchen includes access to a ground-floor shower room.

Upstairs, three bedrooms — two spacious doubles and a comfortable single—are complemented by an additional bathroom. Further benefits include an allocated parking space, an enclosed rear garden, and a loft room for extra storage or potential development.

Ideally located near public transport, amenities, and schools, this property is perfect for first-time buyers or families seeking a well-connected, welcoming home

Lounge

16' 7" x 12' 9" (5.05m x 3.89m)

Double glazed window to front. Laminate flooring, feature fireplace, TV point and radiator.

Dining Room

11' x 9' (3.35m x 2.74m)

Double glazed patio doors to rear. Laminate flooring, and radiator.

Kitchen

14' 7" x 8' 3" (4.45m x 2.51m)

Fully integrated kitchen with matching base and head units with work surfaces over. Built-in electric oven and hob. Stainless steel sink and drainer. Tiled walls. Plumbing for washing machine. Double glazed door to rear.

Bedroom One

12' 8" x 9' 2" (3.86m x 2.79m)

Double glazed window to front. Wall-mounted radiator, and built-in storage. Carpeted throughout.

Bedroom Two

9' 8" x 8' 7" (2.95m x 2.62m)

Double glazed window to rear. Wall-mounted radiator, and built-in storage. Carpeted throughout.

Bedroom Three

9' 8" x 6' 9" (2.95m x 2.06m)

Double glazed window to front. Wall-mounted radiator.

Loft Room

15' 8" x 12' 1" (4.78m x 3.68m)

Velux windows to rear elevation. Currently being used for storage. Laid to carpet.

Bathroom

Double glazed window to rear. Modern white bathroom suite with low level WC, wash hand basin, panelled bath with shower over.

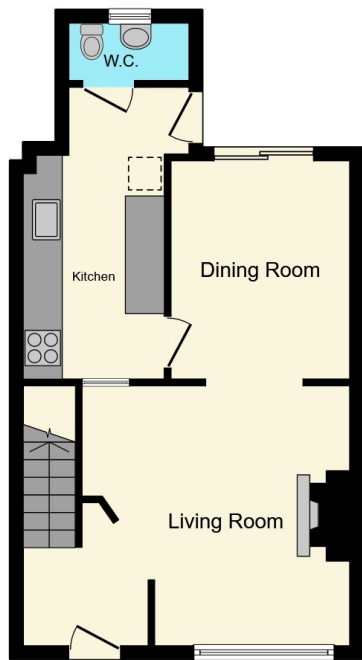
Rear Garden

Fully enclosed rear garden. Patio with pathway to rear access. Laid to lawn.

Downstairs Shower Room

Wash hand basin and WC. Wet room style shower.

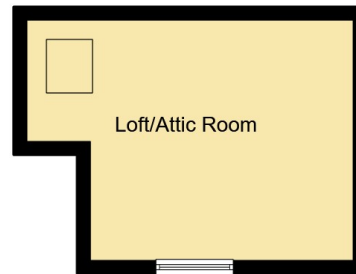




Ground Floor



First Floor



Second Floor

This floor plan is for illustrative purposes only. It is not drawn to scale. Any measurements, floor areas (including any total floor area), openings and orientation are approximate. No details are guaranteed, they cannot be relied upon for any purpose and they do not form part of any agreement. No liability is taken for any error, omission or misstatement. A party must rely upon its own inspection(s). Powered by www.focalagent.com

To view this property please contact Connells on

T 0117 966 4278
E southville@connells.co.uk

243 North Street Southville
 BRISTOL BS3 1JN

EPC Rating: F Council Tax
 Band: C

Tenure: Freehold

check out more properties at connells.co.uk



1. MONEY LAUNDERING REGULATIONS Intending purchasers will be asked to produce identification documentation at a later stage and we would ask for your co-operation in order that there will be no delay in agreeing the sale. 2. These particulars do not constitute part or all of an offer or contract. 3. The measurements indicated are supplied for guidance only and as such must be considered incorrect. Potential buyers are advised to recheck measurements before committing to any expense. 4. We have not tested any apparatus, equipment, fixtures, fittings or services and it is in the buyers interest to check the working condition of any appliances.

Connells Residential is registered in England and Wales under company number 1489613, Registered Office is Cumbria House, 16-20 Hockliffe Street, Leighton Buzzard, Bedfordshire, LU7 1GN. VAT Registration Number is 500 2481 05.

See all our properties at www.connells.co.uk | www.rightmove.co.uk | www.zoopla.co.uk

Property Ref: BMR311676 - 0002

