



Not for marketing purposes INTERNAL USE ONLY

Winford Terrace  
Dundry Bristol



### Property Description

This three bedroom terraced family home offers south facing countryside views and has been well maintained throughout by the current vendors. The property enters into the generous sized living and dining room, offering a wood burner and gorgeous views out the front of the property. The kitchen features a range of base and wall units, as well as integrated appliances such as a gas oven, microwave, dishwasher, washing machine, fridge/freezer and a fitted hob. The family bathroom can also be found on the ground floor comprising of a mains fed shower over bath, W/C and sink. On the first floor there are three generous sized bedrooms. The main bedroom offers space for a king sized bed and plenty of storage, as well an en-suite toilet comprising of a W/C and sink. There are two further double bedrooms, with one benefiting from built in storage. To the rear of the property is a south facing garden, with an artificial lawn and decking perfect for alfresco dining.

12' x 9' 5" ( 3.66m x 2.87m )  
**Bedroom Three**  
8' 5" x 9' 5" ( 2.57m x 2.87m )

### Entrance Porch

Double glazed door and window to the front and side

### Lounge Area

12' 9" x 12' 4" ( 3.89m x 3.76m )  
Double glazed window to the front, Radiator , TV point and wood burner

### Dining Area

12' 10" x 8' 11" ( 3.91m x 2.72m )  
Radiator.

### Kitchen

11' 1" x 8' 1" ( 3.38m x 2.46m )

### Bathroom

11' 1" x 4' ( 3.38m x 1.22m )

### Bedroom One

11' 1" x 12' 4" ( 3.38m x 3.76m )

### En-Suite

### Bedroom Two





This floor plan is for illustrative purposes only. It is not drawn to scale. Any measurements, floor areas (including any total floor area), openings and orientation are approximate. No details are guaranteed, they cannot be relied upon for any purpose and they do not form part of any agreement. No liability is taken for any error, omission or misstatement. A party must rely upon its own inspection(s). Powered by www.focalagent.com

To view this property please contact Connells on

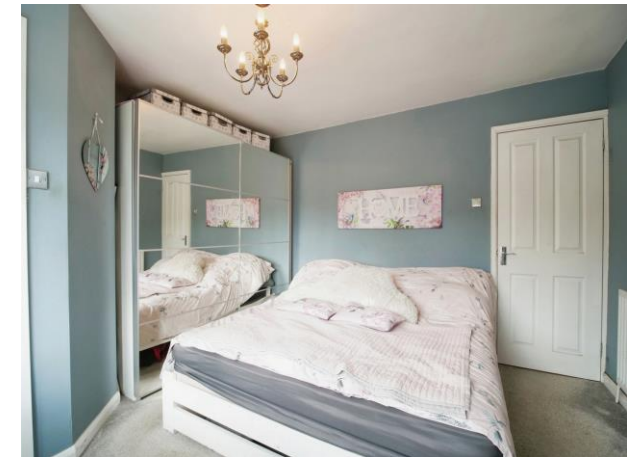
**T 0117 966 4278**

**E southville@connells.co.uk**

243 North Street Southville  
BRISTOL BS3 1JN

**EPC Rating: C**

**check out more properties at connells.co.uk**



Tenure: Freehold



1. MONEY LAUNDERING REGULATIONS Intending purchasers will be asked to produce identification documentation at a later stage and we would ask for your co-operation in order that there will be no delay in agreeing the sale. 2. These particulars do not constitute part or all of an offer or contract. 3. The measurements indicated are supplied for guidance only and as such must be considered incorrect. Potential buyers are advised to recheck measurements before committing to any expense. 4. We have not tested any apparatus, equipment, fixtures, fittings or services and it is in the buyers interest to check the working condition of any appliances.

Connells Residential is registered in England and Wales under company number 1489613, Registered Office is Cumbria House, 16-20 Hockliffe Street, Leighton Buzzard, Bedfordshire, LU7 1GN. VAT Registration Number is 500 2481 05.

**See all our properties at [www.connells.co.uk](http://www.connells.co.uk) | [www.rightmove.co.uk](http://www.rightmove.co.uk) | [www.zoopla.co.uk](http://www.zoopla.co.uk)**

Property Ref: BMR311053 - 0004