



Connells

Robertson Drive
St. Annes Park Bristol



Property Description

Well presented modern mid terrace home located in St Annes Park, within walking distance of local shops and stunning river walks! This lovely modern home comprises lounge, kitchen dining room to the ground floor. Upstairs has two bedrooms a family bathroom and a private garden. Sitting in the heart of St Annes Park this home has local amenities and major bus links on its doorstep. It's location also provides easy links into Bristol City Centre and Temple Meads, along with beautiful walks into St Annes Woods.

Entrance Hall

Double glazed window to front, storage cupboard

Lounge/diner

15' x 12' 6" (4.57m x 3.81m)
Double glazed window to rear, double glazed door to rear, radiator, TV point

Kitchen

6' 5" x 8' (1.96m x 2.44m)
Double glazed window to front, fitted kitchen, wall and base units, sink drainer, electric oven and induction hob

Utility Room

Small converted WC which has plumbing for a washing machine

Bedroom 1

12' 7" x 8' 4" (3.84m x 2.54m)
Double glazed window to front, radiator

Bedroom 2

12' 7" x 8' 2" (3.84m x 2.49m)
Double glazed window to rear, radiator

Bathroom

WC, wash hand basin, towel rail, shower unit

Rear Garden

Patio, lawn and fully enclosed

Parking

Dropped kerb

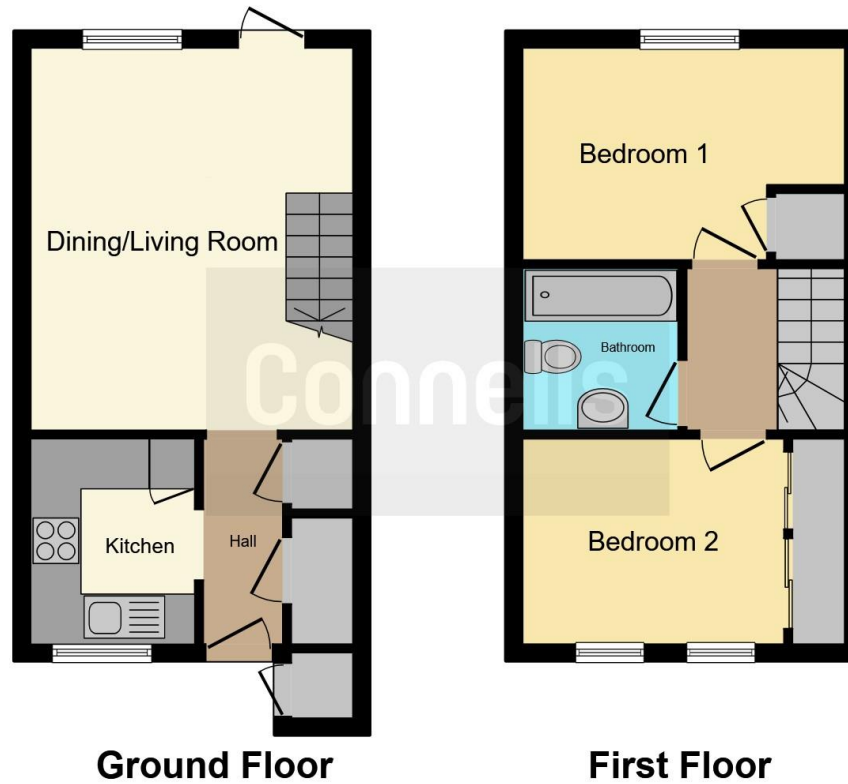
Driveway

Space for 2 cars









This floor plan is for illustrative purposes only. It is not drawn to scale. Any measurements, floor areas (including any total floor area), openings and orientation are approximate. No details are guaranteed, they cannot be relied upon for any purpose and they do not form part of any agreement. No liability is taken for any error, omission or misstatement. A party must rely upon its own inspection(s). Powered by www.focalagent.com

To view this property please contact Connells on

T 0117 966 4278

E southville@connells.co.uk

243 North Street Southville
BRISTOL BS3 1JN

EPC Rating: C

Tenure: Freehold

view this property online connells.co.uk/Property/BMR310651



1. MONEY LAUNDERING REGULATIONS Intending purchasers will be asked to produce identification documentation at a later stage and we would ask for your co-operation in order that there will be no delay in agreeing the sale. 2. These particulars do not constitute part or all of an offer or contract. 3. The measurements indicated are supplied for guidance only and as such must be considered incorrect. Potential buyers are advised to recheck measurements before committing to any expense. 4. We have not tested any apparatus, equipment, fixtures, fittings or services and it is in the buyers interest to check the working condition of any appliances.

Connells Residential is registered in England and Wales under company number 1489613, Registered Office is Cumbria House, 16-20 Hockliffe Street, Leighton Buzzard, Bedfordshire, LU7 1GN. VAT Registration Number is 500 2481 05.

See all our properties at www.connells.co.uk | www.rightmove.co.uk | www.zoopla.co.uk

Property Ref: BMR310651 - 0005