



**Connells**

Boulevard View Whitchurch Lane  
Bristol





### Property Description

Boulevard View is an exciting development with bespoke modern stylish apartments on the fringe of the South West's cultural capital. Stylish and luxurious living surrounded by tranquil green space and a hive of local attractions.

Ideal for first-time buyers each apartment will benefit from an all-inclusive specification comprising Stainless Steel Four Oven, Ceramic Hob, Integrated Fridge/Freezer, Integrated Dishwasher, Integrated Washer Dryer, Microwave, shower over bath with Glazed Enclosure and Chrome Shower Mixer Tap, Fully Tiled Porcelain Walls (White) and Floors (Grey), Chrome Heated Towel Rail, Grey Laminate Flooring Kitchen and Living Area and Fully Grey Carpeted Bedroom. Each apartment will also benefit from Entry System, lift access and downlight fittings spotlights.

An exciting new community cropping up just outside the amazing city of Bristol. The development is perfectly positioned within reach of the beating heart of the city centre, restaurants and bars of Southville, the campus of City of Bristol College, South Bristol Community Hospital and acres of green space and is perfectly placed for the Imperial park and getting around the city and beyond with excellent bus, train and car links. Boulevard View will be at the centre of Bristol's largest urban regeneration scheme, and is now home to a children's play area, skate park, shopping facilities, leisure centre, hospital and a state of the art college.

Boulevard View is an exciting development

with bespoke modern stylish apartments on the fringe of the South West's cultural capital. Stylish and luxurious living surrounded by tranquil green space and a hive of local attractions.

Ideal for first-time buyers each apartment will benefit from an all-inclusive specification comprising Stainless Steel Four Oven, Ceramic Hob, Integrated Fridge/Freezer, Integrated Dishwasher, Integrated Washer Dryer, Microwave, shower over bath with Glazed Enclosure and Chrome Shower Mixer Tap, Fully Tiled Porcelain Walls (White) and Floors (Grey), Chrome Heated Towel Rail, Grey Laminate Flooring Kitchen and Living Area and Fully Grey Carpeted Bedroom. Each apartment will also benefit from Entry System, lift access and downlight fittings spotlights.

An exciting new community cropping up just outside the amazing city of Bristol. The development is perfectly positioned within reach of the beating heart of the city centre, restaurants and bars of Southville, the campus of City of Bristol College, South Bristol Community Hospital and acres of green space and is perfectly placed for the Imperial park and getting around the city and beyond with excellent bus, train and car links. Boulevard View will be at the centre of Bristol's largest urban regeneration scheme, and is now home to a children's play area, skate park, shopping facilities, leisure centre, hospital and a state of the art college.

Boulevard View is an exciting development with bespoke modern stylish apartments on

the fringe of the South West's cultural capital. Stylish and luxurious living surrounded by tranquil green space and a hive of local attractions.

Ideal for first-time buyers each apartment will benefit from an all-inclusive specification comprising Stainless Steel Four Oven, Ceramic Hob, Integrated Fridge/Freezer, Integrated Dishwasher, Integrated Washer Dryer, Microwave, shower over bath with Glazed Enclosure and Chrome Shower Mixer Tap, Fully Tiled Porcelain Walls (White) and Floors (Grey), Chrome Heated Towel Rail, Grey Laminate Flooring Kitchen and Living Area and Fully Grey Carpeted Bedroom. Each apartment will also benefit from Entry System, lift access and downlight fittings spotlights.

An exciting new community cropping up just outside the amazing city of Bristol. The development is perfectly positioned within reach of the beating heart of the city centre, restaurants and bars of Southville, the campus of City of Bristol College, South Bristol Community Hospital and acres of green space and is perfectly placed for the Imperial park and getting around the city and beyond with excellent bus, train and car links. Boulevard View will be at the centre of Bristol's largest urban regeneration scheme, and is now home to a children's play area, skate park, shopping facilities, leisure centre, hospital and a state of the art college.

Boulevard View is an exciting development with bespoke modern stylish apartments on the fringe of the South West's cultural capital. Stylish and luxurious living surrounded by tranquil green space and a hive of local attractions.

Ideal for first-time buyers each apartment will

benefit from an all-inclusive specification comprising Stainless Steel Four Oven, Ceramic Hob, Integrated Fridge/Freezer, Integrated Dishwasher, Integrated Washer Dryer, Microwave, shower over bath with Glazed Enclosure and Chrome Shower Mixer Tap, Fully Tiled Porcelain Walls (White) and Floors (Grey), Chrome Heated Towel Rail, Grey Laminate Flooring Kitchen and Living Area and Fully Grey Carpeted Bedroom. Each apartment will also benefit from Entry System, lift access and downlight fittings spotlights.

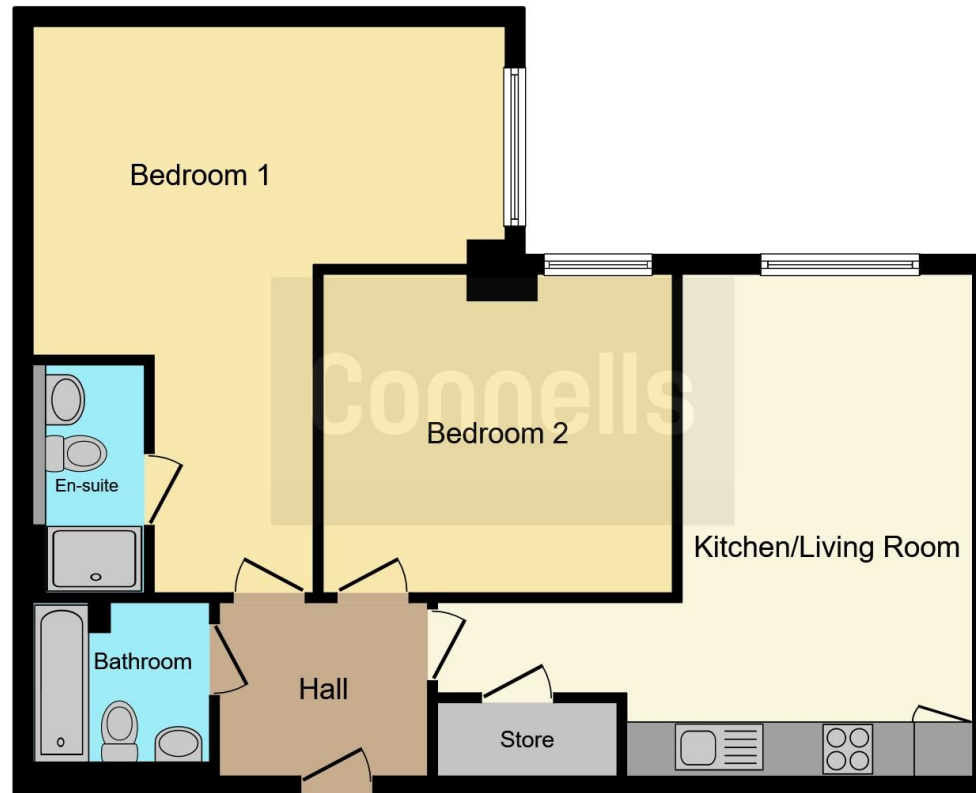
An exciting new community cropping up just outside the amazing city of Bristol. The development is perfectly positioned within reach of the beating heart of the city centre, restaurants and bars of Southville, the campus of City of Bristol College, South Bristol Community Hospital and acres of green space and is perfectly placed for the Imperial park and getting around the city and beyond with excellent bus, train and car links. Boulevard View will be at the centre of Bristol's largest urban regeneration scheme, and is now home to a children's play area, skate park, shopping facilities, leisure centre, hospital and a state of the art college.











This floorplan is for illustrative purposes only and is not drawn to scale. Measurements, floor-areas, openings and orientations are approximate. They should not be relied upon for any purpose and do not form any part of an agreement. No liability is taken for any error or mis-statement. All parties must rely on their own inspections.

To view this property please contact Connells on

**T 0117 966 4278**

**E [southville@connells.co.uk](mailto:southville@connells.co.uk)**

243 North Street Southville  
BRISTOL BS3 1JN

**EPC Rating: C**

Tenure: Leasehold

**view this property online [connells.co.uk/Property/BMR310551](https://connells.co.uk/Property/BMR310551)**

This is a Leasehold property with details as follows; Term of Lease 250 years from 31 Jan 2020. Should you require further information please contact the branch. Please Note additional fees could be incurred for items such as



1. MONEY LAUNDERING REGULATIONS Intending purchasers will be asked to produce identification documentation at a later stage and we would ask for your co-operation in order that there will be no delay in agreeing the sale. 2. These particulars do not constitute part or all of an offer or contract. 3. The measurements indicated are supplied for guidance only and as such must be considered incorrect. Potential buyers are advised to recheck measurements before committing to any expense. 4. We have not tested any apparatus, equipment, fixtures, fittings or services and it is in the buyers interest to check the working condition of any appliances.

Connells Residential is registered in England and Wales under company number 1489613, Registered Office is Cumbria House, 16-20 Hockliffe Street, Leighton Buzzard, Bedfordshire, LU7 1GN. VAT Registration Number is 500 2481 05.

**See all our properties at [www.connells.co.uk](http://www.connells.co.uk) | [www.rightmove.co.uk](http://www.rightmove.co.uk) | [www.zoopla.co.uk](http://www.zoopla.co.uk)**

Property Ref: BMR310551 - 0005