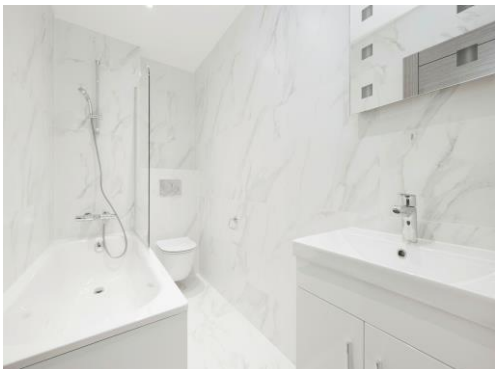




**Connells**

Silverdale Road  
Bushey



## Property Description

Introducing these impressive 5-bedroom ECO-Friendly homes, where contemporary elegance and sustainable living converge. With an array of luxurious amenities and eco-conscious features, these newly constructed residences redefine luxurious living with MODERN ELEGANCE AND SUSTAINABLE DESIGN.

### Eco-Elegance:

Immerse yourself in a world of sustainability with fully electric configurations, paired with underfloor heating and state-of-the-art heat source pumps, ensuring not just comfort but also a profound commitment to the environment.

### Luxury At Your Fingertips

Delight in the finer things with deluxe amenities like Quooker hot taps and water softeners, adding a touch of indulgence to your daily routine, while effortlessly blending functionality with sophistication.

### Contemporary Chic

Step into a realm of modern elegance, where spacious living areas and chic finishes create an atmosphere of refined luxury, setting the stage for a lifestyle defined by both comfort and style.

## Space To Thrive

Retreat to generously proportioned bedrooms and sumptuous bathrooms, offering sanctuary and relaxation amidst the hustle and bustle of modern life, ensuring that every moment spent at home is a moment well cherished.

### Kitchen

13' 10" x 13' ( 4.22m x 3.96m )

### Lounge

18' 8" x 13' ( 5.69m x 3.96m )

### Reception Room / Bedroom Five

18' 7" x 13' 1" ( 5.66m x 3.99m )

### Study

10' 1" x 8' 10" ( 3.07m x 2.69m )

### Cloakroom

### Bedroom One

13' 6" x 13' 1" ( 4.11m x 3.99m )

### En-Suite

### Bedroom Two

13' 1" x 8' 9" ( 3.99m x 2.67m )

### Bedroom Three

12' 6" x 11' 3" ( 3.81m x 3.43m )

### Bedroom Four

11' 4" x 7' 4" ( 3.45m x 2.24m )

### Bathroom

### Shower Room

## Kitchen

Contemporary handleless high gloss units with soft-close doors and drawers

Quartz work tops

BOSCH Electric Oven and induction hob with built in extractor fan

BOSCH Integrated appliances including dishwasher, washer dryer & microwave

BLANCO sink

Quooker hot tap

Space for Fridge /Freezer

## Flooring

Amtico wood effect flooring to kitchen, hallway and bedrooms

Carpets in grey to stairs

## Bathroom & Ensuite

Contemporary and stylish bathrooms

Wall mounted basin with Grohe chrome mixer taps

White bath with Grohe bath filler, stylish fixed wall mounted shower and glass bath screen to one bedroom apartments

Ensuite - large shower enclosure with Grohe fixed overhead rose and hand held shower with wall mounted controls

Back to wall soft close WC with Geberit flush system

Polished chrome ladder towel rail

Ceramic floor and wall tiling

Grohe chrome taps and shower

HIB LED mirror

## Tiling

Ceramic marble effect tiles in Bathrooms, Ensuite and WC

Full tiling to Bathroom, Ensuite and WC

## Heating And Insulation

Air source heat pump

SMART Ecodan renewable heating technology

Zoned underfloor heating to all floors

## General

Ceilings to be painted in white emulsion and all internal walls in white emulsion

Graphite PVCU windows

White Sanitary ware

Contemporary style internal doors

Standard BT points in Hall and Lounge

TV and network points in main rooms

Smoke and CO2 detection

Fire alarm and Imist systems

Intruder alarm

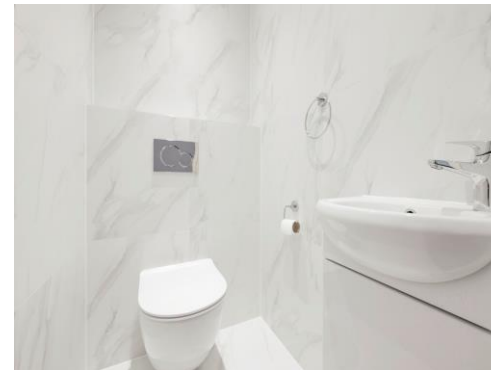
## External

Garden laid to turf

Patio area

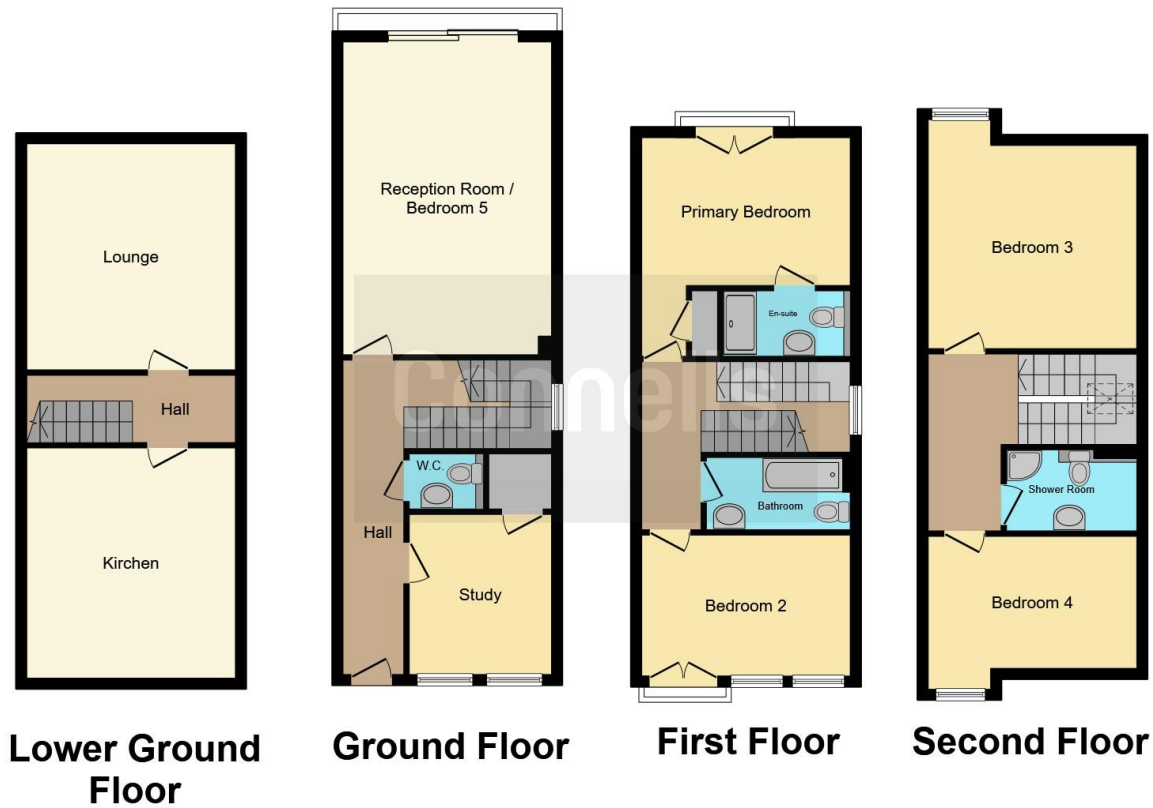
Outside Tap

External lighting









This floor plan is for illustrative purposes only. It is not drawn to scale. Any measurements, floor areas (including any total floor area), openings and orientation are approximate. No details are guaranteed, they cannot be relied upon for any purpose and they do not form part of any agreement. No liability is taken for any error, omission or misstatement. A party must rely upon its own inspection(s). Powered by [www.focalagent.com](http://www.focalagent.com)

To view this property please contact Connells on

**T 020 8950 4404**  
**E [bushey@connells.co.uk](mailto:bushey@connells.co.uk)**

86 High Street  
 BUSHEY WD23 3HD

**EPC Rating: B**

**view this property online [connells.co.uk/Property/BUS307484](http://connells.co.uk/Property/BUS307484)**

Tenure: Freehold



1. MONEY LAUNDERING REGULATIONS Intending purchasers will be asked to produce identification documentation at a later stage and we would ask for your co-operation in order that there will be no delay in agreeing the sale. 2. These particulars do not constitute part or all of an offer or contract. 3. The measurements indicated are supplied for guidance only and as such must be considered incorrect. Potential buyers are advised to recheck measurements before committing to any expense. 4. We have not tested any apparatus, equipment, fixtures, fittings or services and it is in the buyers interest to check the working condition of any appliances.

Connells Residential is registered in England and Wales under company number 1489613, Registered Office is Cumbria House, 16-20 Hockliffe Street, Leighton Buzzard, Bedfordshire, LU7 1GN. VAT Registration Number is 500 2481 05.

**See all our properties at [www.connells.co.uk](http://www.connells.co.uk) | [www.rightmove.co.uk](http://www.rightmove.co.uk) | [www.zoopla.co.uk](http://www.zoopla.co.uk)**

Property Ref: BUS307484 - 0032