



Connells

Southfield Park
Harrow



Property Description

Connells are pleased to offer to the market this stunning four bedroom semi detached house.

The property is well presented throughout with contemporary interiors. Briefly comprising of three reception rooms, fully fitted kitchen, family bathroom, off street parking and an attractive private garden with a patio area.

Southfield Park is conveniently located moments from outstanding schooling options for all ages. North Harrow boasts a host of amenities and excellent transport links including the metropolitan line Station. Headstone Manor Recreation Ground is also close by.

This would make an ideal family home.

Viewings are highly recommended.

Connells are pleased to offer to the market this stunning four bedroom semi detached house.

The property is well presented throughout with contemporary interiors. Briefly comprising of three reception rooms, fully fitted kitchen, family bathroom, off street parking and an attractive private garden with a patio area.

Southfield Park is conveniently located moments from outstanding schooling options for all ages. North Harrow boasts a host of amenities and excellent transport links including the metropolitan line Station. Headstone Manor Recreation Ground is also close by.

This would make an ideal family home.

Viewings are highly recommended.

Connells are pleased to offer to the market this stunning four bedroom semi detached house.

The property is well presented throughout with contemporary interiors. Briefly comprising of three reception rooms, fully fitted kitchen, family bathroom, off street parking and an attractive private garden with a patio area.

Southfield Park is conveniently located moments from outstanding schooling options for all ages. North Harrow boasts a host of amenities and excellent transport links including the metropolitan line Station. Headstone Manor Recreation Ground is also

close by.

This would make an ideal family home. Viewings are highly recommended.

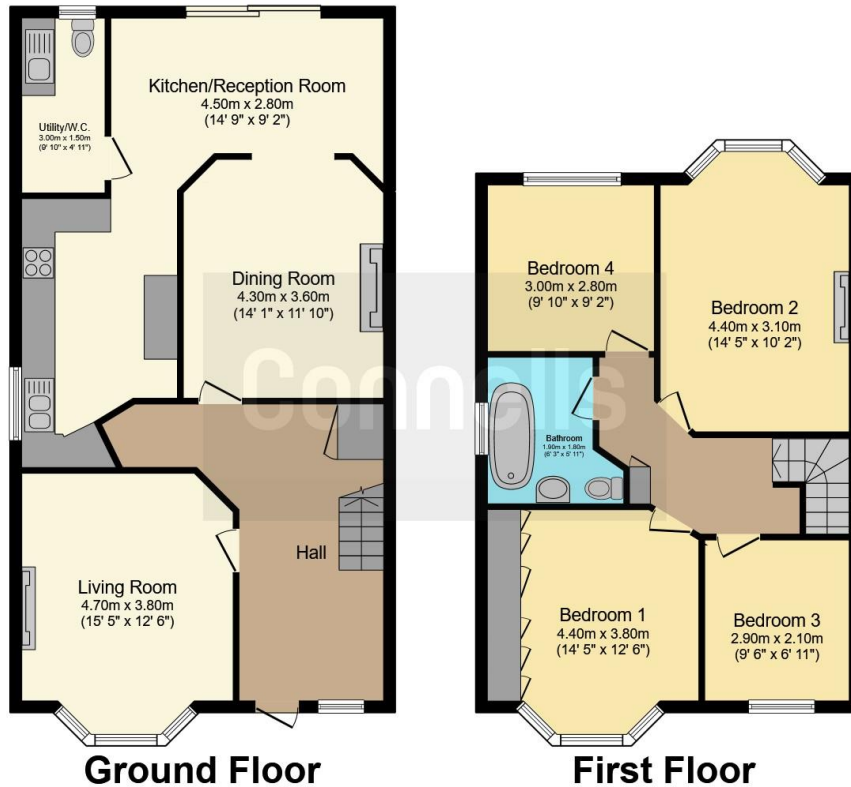
Connells are pleased to offer to the market this stunning four bedroom semi detached house.

The property is well presented throughout with contemporary interiors. Briefly comprising of three reception rooms, fully fitted kitchen, family bathroom, off street parking and an attractive private garden with a patio area.

Southfield Park is conveniently located moments from outstanding schooling options for all ages. North Harrow boasts a host of amenities and excellent transport links including the metropolitan line Station. Headstone Manor Recreation Ground is also close by.

This would make an ideal family home. Viewings are highly recommended.





This floor plan is for illustrative purposes only. It is not drawn to scale. Any measurements, floor areas (including any total floor area), openings and orientation are approximate. No details are guaranteed, they cannot be relied upon for any purpose and they do not form part of any agreement. No liability is taken for any error, omission or misstatement. A party must rely upon its own inspection(s). Powered by www.focalagent.com

To view this property please contact Connells on

T 020 8427 4321
E harrow@connells.co.uk

182 Station Road
 HARROW HA1 2RH

EPC Rating: E

view this property online connells.co.uk/Property/HRW311242



Tenure: Freehold



1. MONEY LAUNDERING REGULATIONS Intending purchasers will be asked to produce identification documentation at a later stage and we would ask for your co-operation in order that there will be no delay in agreeing the sale. 2. These particulars do not constitute part or all of an offer or contract. 3. The measurements indicated are supplied for guidance only and as such must be considered incorrect. Potential buyers are advised to recheck measurements before committing to any expense. 4. We have not tested any apparatus, equipment, fixtures, fittings or services and it is in the buyers interest to check the working condition of any appliances.

Connells Residential is registered in England and Wales under company number 1489613, Registered Office is Cumbria House, 16-20 Hockliffe Street, Leighton Buzzard, Bedfordshire, LU7 1GN. VAT Registration Number is 500 2481 05.

See all our properties at www.connells.co.uk | www.rightmove.co.uk | www.zoopla.co.uk

Property Ref: HRW311242 - 0007