



Bramble Walk  
Barley Road Andover



# Bramble Walk Barley Road Andover SP11 6NZ

for sale  
**£350,000**



## Property Description

This charming 3-bedroom semi-detached property in East Anton is perfect for families seeking both comfort and convenience.

The ground floor comprises: Open plan living/dining room, a spacious area ideal for family gatherings and entertaining, filled with natural light. Separate well-equipped kitchen with modern appliances and ample storage, perfect for culinary enthusiasts. The downstairs cloakroom is conveniently situated for guests and family use.

On the first floor you'll find the principal double bedroom featuring an ensuite bathroom for added privacy and convenience. The second bedroom is a spacious double perfect for children or guests and the third bedroom is a versatile room that can be used as a bedroom, home office, or playroom. with the well-appointed family bathroom serving the two bedrooms. Outside the property boasts driveway parking and a generous rear garden, perfect for children to play or for summer gatherings.



Situated in the family-friendly East Anton area, this property is within walking distance to playgrounds, Roman Way Primary School, and the Augusta Park Community Centre, making it an ideal choice for families. This home combines spacious living with a convenient location, making it a must-see!

## Accommodation

### Cloakroom

2-piece bathroom suite, window to the front aspect and radiator.

### Lounge

13' 11" x 16' (4.24m x 4.88m)

### Kitchen

8' 8" x 10' 8" (2.64m x 3.25m)

A range of wall /base mounted units, window to the front aspect, oven, gas hob and radiator.

### Bedroom One

9' 11" x 9' 2" (3.02m x 2.79m)

Window to the front elevation and radiator.

### Ensuite

3-piece suite with shower, extractor fan and heated towel rail.

### Bedroom Two

9' 8" x 9' 2" (2.95m x 2.79m)

Window to the front elevation and wardrobe.

### Bedroom Three

6' 7" x 6' 9" (2.01m x 2.06m)

Window to the rear elevation and radiator.

### Bathroom

3-piece bathroom suite, bath with overhead shower, extractor fan, heated towel rail and window to the front elevation.



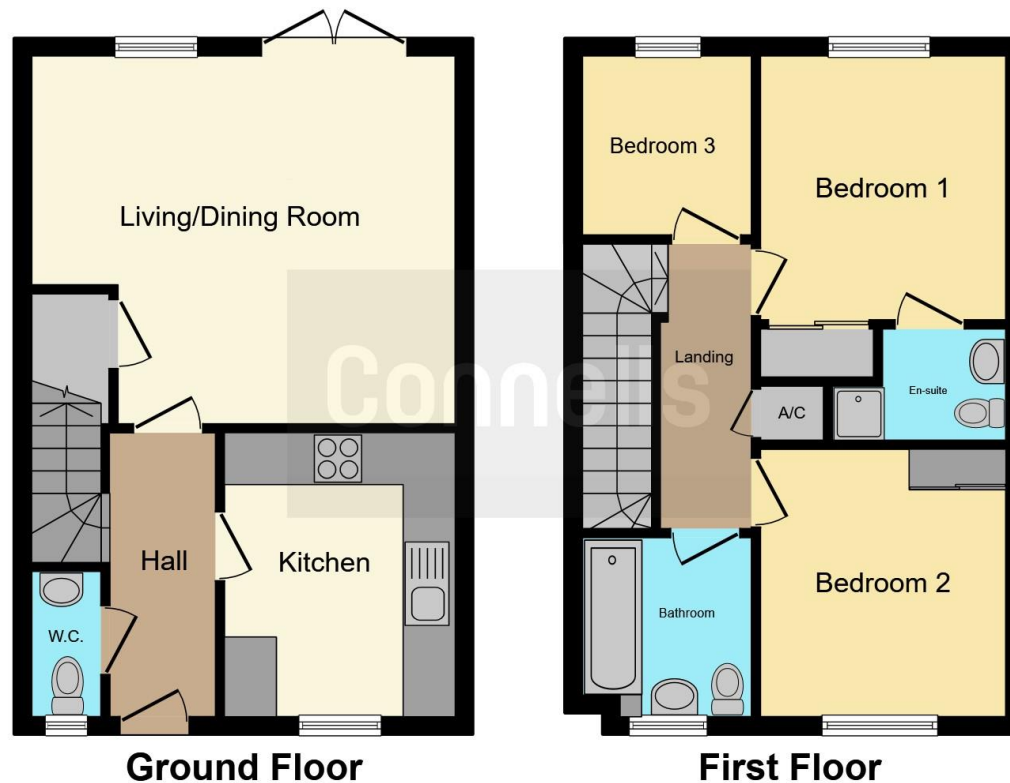












This floor plan is for illustrative purposes only. It is not drawn to scale. Any measurements, floor areas (including any total floor area), openings and orientation are approximate. No details are guaranteed, they cannot be relied upon for any purpose and they do not form part of any agreement. No liability is taken for any error, omission or misstatement. A party must rely upon its own inspection(s). Powered by [www.focalagent.com](http://www.focalagent.com)

To view this property please contact Connells on

**T 01264 352 207**  
**E [andover@connells.co.uk](mailto:andover@connells.co.uk)**

23-25 Winchester House, Winchester Street  
 ANDOVER SP10 2EA

**EPC Rating: C**

Tenure: Freehold

**check out more properties at [connells.co.uk](http://connells.co.uk)**



1. MONEY LAUNDERING REGULATIONS Intending purchasers will be asked to produce identification documentation at a later stage and we would ask for your co-operation in order that there will be no delay in agreeing the sale. 2. These particulars do not constitute part or all of an offer or contract. 3. The measurements indicated are supplied for guidance only and as such must be considered incorrect. Potential buyers are advised to recheck measurements before committing to any expense. 4. We have not tested any apparatus, equipment, fixtures, fittings or services and it is in the buyers interest to check the working condition of any appliances.

Connells Residential is registered in England and Wales under company number 1489613, Registered Office is Cumbria House, 16-20 Hockliffe Street, Leighton Buzzard, Bedfordshire, LU7 1GN. VAT Registration Number is 500 2481 05.

**See all our properties at [www.connells.co.uk](http://www.connells.co.uk) | [www.rightmove.co.uk](http://www.rightmove.co.uk) | [www.zoopla.co.uk](http://www.zoopla.co.uk)**

Property Ref: ADV309527 - 0001