



Connells

Coach House Mews
Amesbury Salisbury



Property Description

Located within a select cul-de-sac within the favoured Salisbury Road area, this well presented property features a lovely landscaped garden and adjacent garage. Internally the property is well presented the A303 and Salisbury are just minutes away.

Entrance Hall

Stairs to first floor landing, access to lounge and cloakroom.

Cloakroom

Comprising a wash hand basin and WC. Heated chrome towel rail.

Lounge/ Dining Room

18' max x 14' 3" max (5.49m max x 4.34m max)

Double aspect with door to garden, built in cupboards..

Kitchen

10' 3" x 9' 5" (3.12m x 2.87m)

Comprising a single drainer sink unit with mixer taps, range of wall and base units with work surfaces over, built in oven, inset hob unit with concealed hood over, space for washing machine, further appliance space, double aspect with door to garden.

Galleried Landing

Built in airing cupboard, access to loft space.

Bedroom One

12' max x 11' max (3.66m max x 3.35m max)

Front aspect.

Bedroom Two

9' 5" x 8' 6" (2.87m x 2.59m)

Fitted cupboards, rear aspect.

Bedroom Three/ Study

11' 2" x 5' 8" (3.40m x 1.73m)

Vaulted ceiling, rear aspect.

Bathroom

Comprising a panel enclosed bath with shower and glass screen, wash hand basin and WC.

Outside

Landscaped Garden

This well-designed landscaped garden offers good privacy and has a pleasant outlook. There is a large area of patio with steps up to a small terrace bordered by lawn with a retaining wall. There is also a brick-built storage shed and a personal door leads into

the garage.

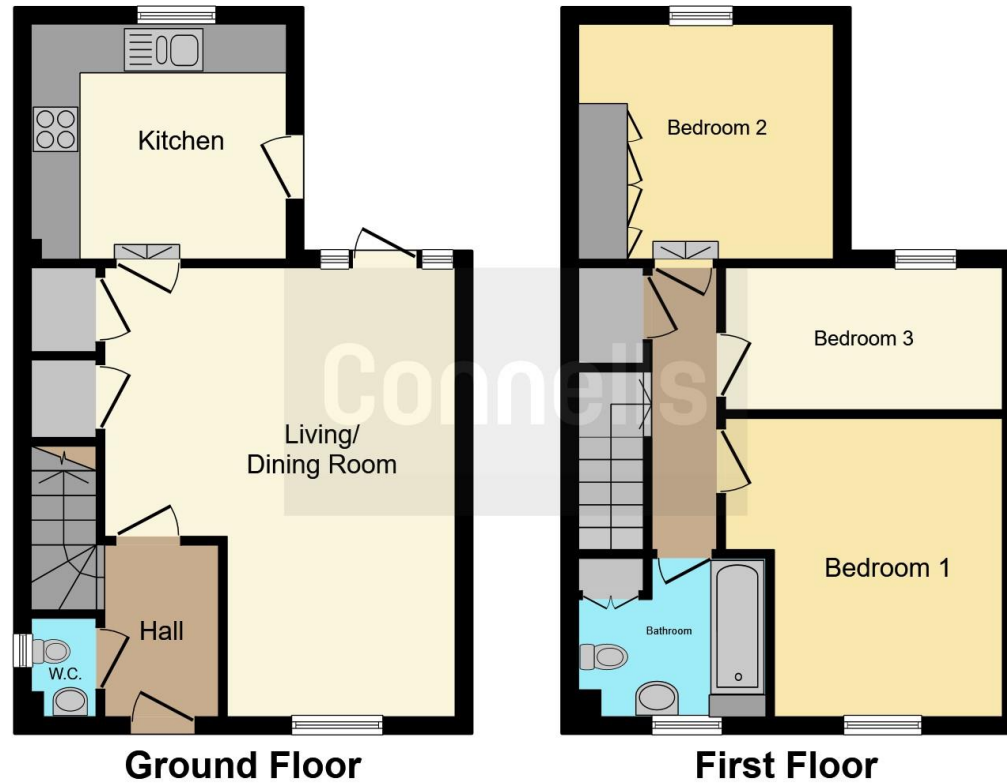
Garage

With up and over door, power and light and a personal door into the garden. The garage is approached by a private driveway.









This floor plan is for illustrative purposes only. It is not drawn to scale. Any measurements, floor areas (including any total floor area), openings and orientation are approximate. No details are guaranteed, they cannot be relied upon for any purpose and they do not form part of any agreement. No liability is taken for any error, omission or misstatement. A party must rely upon its own inspection(s). Powered by www.focalagent.com

To view this property please contact Connells on

T 01980 622 662
E amesbury@connells.co.uk

Unit 3 23 Salisbury Street AMESBURY
 SALISBURY SP4 7AW

EPC Rating: Awaited

Tenure: Freehold

view this property online connells.co.uk/Property/ABY307846



1. MONEY LAUNDERING REGULATIONS Intending purchasers will be asked to produce identification documentation at a later stage and we would ask for your co-operation in order that there will be no delay in agreeing the sale. 2. These particulars do not constitute part or all of an offer or contract. 3. The measurements indicated are supplied for guidance only and as such must be considered incorrect. Potential buyers are advised to recheck measurements before committing to any expense. 4. We have not tested any apparatus, equipment, fixtures, fittings or services and it is in the buyers interest to check the working condition of any appliances.

Connells Residential is registered in England and Wales under company number 1489613, Registered Office is Cumbria House, 16-20 Hockliffe Street, Leighton Buzzard, Bedfordshire, LU7 1GN. VAT Registration Number is 500 2481 05.

See all our properties at www.connells.co.uk | www.rightmove.co.uk | www.zoopla.co.uk

Property Ref: ABY307846 - 0003