





Property Description

This park home with garden and driveway is offered with no chain and is well located within this popular site in the centre of Amesbury. No dogs allowed.

Entrance Hall

Built in cupboard.

Lounge/ Dining Room

Extensive views to front, serving hatch.

Kitchen

Comprising a single drainer sink unit, range of wall and base units with work surfaces, cooker space, further appliance space, serving hatch, door to side.

Bedroom One

Fitted wardrobes.

Bedroom Two

Fitted wardrobes.

Shower Room

Comprising a shower cubicle, pedestal wash hand basin and WC, heated towel rail.

Outside

Garden

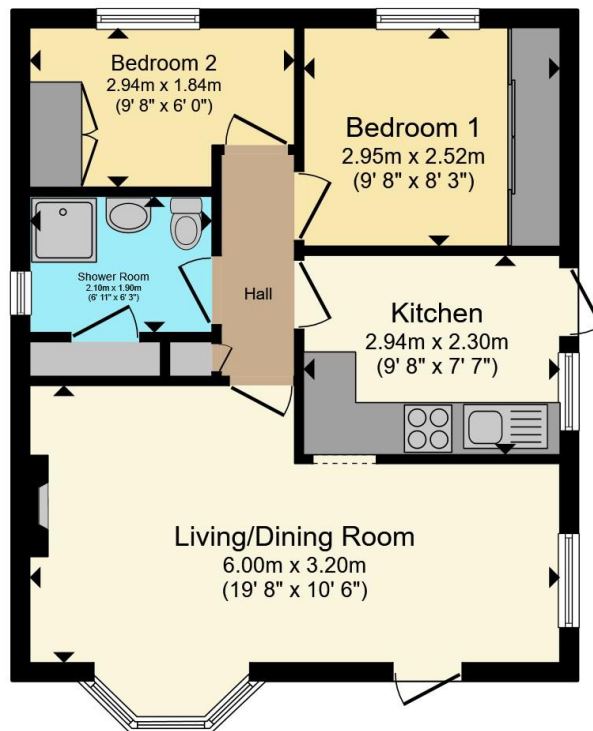
Laid to lawn.

Private Driveway

To the side.







Total floor area 45.5 m² (490 sq.ft.) approx

This floor plan is for illustrative purposes only. It is not drawn to scale. Any measurements, floor areas (including any total floor area), openings and orientation are approximate. No details are guaranteed, they cannot be relied upon for any purpose and they do not form part of any agreement. No liability is taken for any error, omission or misstatement. A party must rely upon its own inspection(s). Powered by www.propertybox.io

Connells

To view this property please contact Connells on

T 01980 622 662
E amesbury@connells.co.uk

Unit 3 23 Salisbury Street AMESBURY
SALISBURY SP4 7AW

EPC Rating:
Exempt

Council Tax
Band: A

Service Charge: Ask
Agent

Ground Rent:
Ask Agent

Tenure: Commonhold

view this property online connells.co.uk/Property/ABY308588

This is a Commonhold property. As a Unit Holder there is entitlement to be a member of a Commonhold Association and rights and obligations apply. Please contact the branch or your legal representative for more details.



1. MONEY LAUNDERING REGULATIONS Intending purchasers will be asked to produce identification documentation at a later stage and we would ask for your co-operation in order that there will be no delay in agreeing the sale. 2. These particulars do not constitute part or all of an offer or contract. 3. The measurements indicated are supplied for guidance only and as such must be considered incorrect. Potential buyers are advised to recheck measurements before committing to any expense. 4. We have not tested any apparatus, equipment, fixtures, fittings or services and it is in the buyers interest to check the working condition of any appliances.

Connells Residential is registered in England and Wales under company number 1489613, Registered Office is Cumbria House, 16-20 Hockliffe Street, Leighton Buzzard, Bedfordshire, LU7 1GN. VAT Registration Number is 500 2481 05.

See all our properties at www.connells.co.uk | www.rightmove.co.uk | www.zoopla.co.uk

Property Ref: ABY308588 - 0004