



**Connells**

Archers Way  
Amesbury Salisbury





## Property Description

This large, double fronted, linked town house features a whole top floor master suite with master bedroom, large dressing room/snug and ensuite. The property is located on a popular development within minutes of the A303, Salisbury and Andover

## Entrance Hall

Stairs to first floor landing, access to cloakroom, lounge and kitchen/dining room.

## Cloakroom

Comprising a pedestal wash hand basin and WC.

## Lounge

18' 8" x 9' 4" ( 5.69m x 2.84m )

Dual aspect to front and side, feature fireplace, shuttered blinds.

## Kitchen/ Break/ Dining Room

18' 7" max x 18' max ( 5.66m max x 5.49m max )

Comprising a single drainer sink unit with mixer taps, range of stylish wall and base units with work surfaces over, island unit with further cupboards and breakfast bar, built in double oven, gas hob unit with hood over, built in concealed fridge and freezer, built in washing machine and dishwasher,

## Dining Area

Large square bay to side.

## Galleried Landing

Stairs to master suite, built in cupboard, feature arch window.

## Bedroom Two

11' 4" x 9' 4" ( 3.45m x 2.84m )

Side aspect.

## Bedroom Three

11' 5" x 10' ( 3.48m x 3.05m )

Front aspect.

## Bedroom Four

9' 4" x 7' ( 2.84m x 2.13m )

Front aspect.

## Four Piece Bathroom

Comprising a panel enclosed bath with separate shower cubicle, pedestal wash hand basin and WC.

## Top Floor Master Suite

## Master Landing

Secure cupboard.

## Master Bedroom

18' 9" x 9' 4" ( 5.71m x 2.84m )

Part vaulted and double aspect, open through to..

## Dressing Room/ Snug

11' 5" x 9' 3" ( 3.48m x 2.82m )

Built in wardrobes, front aspect.

## Four Piece Ensuite

Comprising a panel enclosed bath with separate shower cubicle, pedestal wash hand basin and WC.

## Outside

## Part Walled Garden

Offering good privacy with lawned area and patio.

## Two Garages

Both garages measure 19' and have power and light. They are located under a coach house close by..

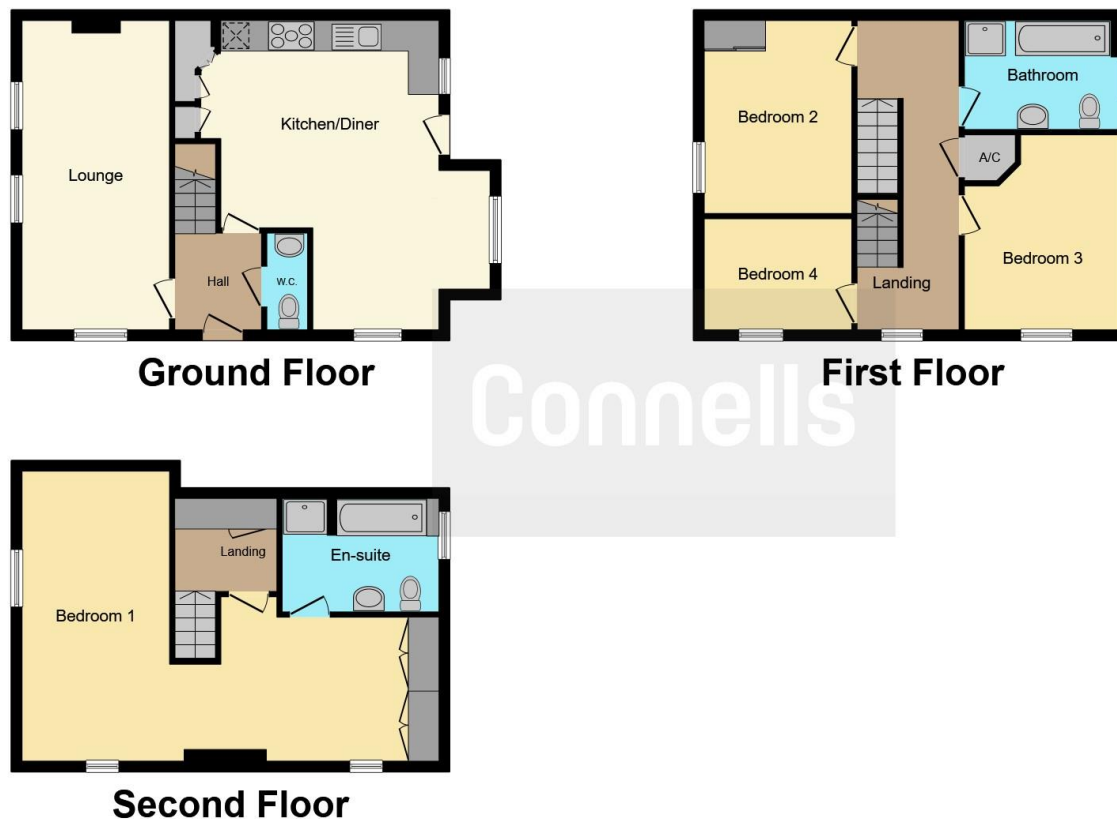












This floor plan is for illustrative purposes only. It is not drawn to scale. Any measurements, floor areas (including any total floor area), openings and orientation are approximate. No details are guaranteed, they cannot be relied upon for any purpose and they do not form part of any agreement. No liability is taken for any error, omission or misstatement. A party must rely upon its own inspection(s). Powered by [www.focalagent.com](http://www.focalagent.com)

To view this property please contact Connells on

**T 01980 622 662**  
**E [amesbury@connells.co.uk](mailto:amesbury@connells.co.uk)**

Unit 3 23 Salisbury Street AMESBURY  
 SALISBURY SP4 7AW

EPC Rating: C Council Tax  
 Band: E

Tenure: Freehold

**view this property online [connells.co.uk/Property/ABY308355](http://connells.co.uk/Property/ABY308355)**



1. MONEY LAUNDERING REGULATIONS Intending purchasers will be asked to produce identification documentation at a later stage and we would ask for your co-operation in order that there will be no delay in agreeing the sale. 2. These particulars do not constitute part or all of an offer or contract. 3. The measurements indicated are supplied for guidance only and as such must be considered incorrect. Potential buyers are advised to recheck measurements before committing to any expense. 4. We have not tested any apparatus, equipment, fixtures, fittings or services and it is in the buyers interest to check the working condition of any appliances.

Connells Residential is registered in England and Wales under company number 1489613, Registered Office is Cumbria House, 16-20 Hockliffe Street, Leighton Buzzard, Bedfordshire, LU7 1GN. VAT Registration Number is 500 2481 05.

**See all our properties at [www.connells.co.uk](http://www.connells.co.uk) | [www.rightmove.co.uk](http://www.rightmove.co.uk) | [www.zoopla.co.uk](http://www.zoopla.co.uk)**

Property Ref: ABY308355 - 0005